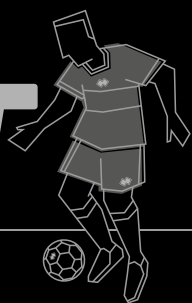




COLLECTION  
COLLECTION  
**2025**  
COLLECTION



**FOOTBALL**







# LA NOSTRA STORIA E I NOSTRI OBIETTIVI RACCHIUSI IN QUESTE PAGINE.

*Il nostro cuore è italiano ma la nostra mente ci fa viaggiare in tutto il mondo, in ogni sport e a qualsiasi livello*



Dal 1988 produciamo capi sportivi e tecnici in grado di migliorare le performances di chi vive e ama lo sport, assicurando i massimi standard di qualità, sicurezza e comfort. Il servizio e la cura del cliente sono la nostra priorità: la nostra principale e grande responsabilità è la soddisfazione e l'attenzione verso il consumatore.

Ci distinguiamo dai principali competitors perché siamo la prima azienda in Europa nel settore teamwear ad avere ottenuto la certificazione Oeko-Tex Standard 100, un ulteriore attestato che ci rende orgogliosi del lavoro svolto quotidianamente. Nella sede di San Polo di Torriale gestiamo l'intera filiera produttiva e lo sviluppo di tutte le fasi di lavorazione del prodotto, dalla selezione delle materie prime alla progettazione dell'aspetto grafico, dalla produzione dei prototipi fino alla consegna del capo finito. Scegliamo di essere produttori perché ci permette di garantire la massima sicurezza grazie a meticolosi controlli interni. L'efficace gestione aziendale si impegna ogni giorno a monitorare e migliorare l'organizzazione e il controllo, ottimizzare i processi, ridurre le inefficienze, contribuendo così alla qualità dei prodotti e servizi. Grazie al prezioso lavoro quotidiano, abbiamo ottenuto la certificazione ISO 9001:2015.

Oggi siamo presenti in 80 paesi, in costante ricerca di nuovi mercati e nuove sfide.

Since 1988, we've been producing sports and technical clothing able to boost the performance of those who love practising and experiencing sport, guaranteeing top standards of quality, safety and comfort. Customer service and care are our priority: our primary responsibility is to attend to and meet our customers' needs. What sets us apart from our main competitors is that we are the first company in the teamwear sector in Europe to have obtained Oeko-Tex Standard 100 certification, a further demonstration of why we can be proud of the work we do every day.

The entire production chain is managed at its headquarters in San Polo di Torriale, along with the development of all the manufacturing stages: from the selection of raw materials to the design of the graphics, from prototype production right up to the shipment of the finished garments. We have chosen to produce our own items because it allows us to guarantee maximum safety, thanks to the meticulous checks we carry out in-house.

Every day, our efficient corporate management strives to monitor and improve organisation and control, optimise processes and reduce inefficiencies, thus boosting the quality of our products and services. This sterling effort we make every day has earned us ISO 9001:2015 certification.

Today we are present in 80 countries and constantly on the lookout for new markets and challenges.

Depuis 1988, nous produisons des articles sportifs et techniques en mesure d'améliorer les performances de ceux qui vivent et aiment le sport, en assurant les plus hauts standards de qualité, de sécurité et de confort. Le service et le soin du client sont notre priorité: notre grande et principale responsabilité est la satisfaction et l'attention envers le consommateur.

Nous nous distinguons par rapport à nos principaux concurrents car nous sommes la première entreprise en Europe dans le secteur du teamwear à avoir obtenu la certification Oeko-Tex Standard 100, une attestation supplémentaire qui nous rend fiers du travail réalisé quotidiennement. La gestion de l'ensemble de la filière de production ainsi que le développement de toutes les étapes de réalisation du produit, sélection des matières premières, projet graphique, production des prototypes et livraison des vêtements finis ont lieu au siège de San Polo di Torriale. Nous choisissons d'être producteurs car cela nous permet de garantir la sécurité maximale grâce à des contrôles méticuleux que nous réalisons en interne.

Grâce à une gestion efficace, l'entreprise s'engage chaque jour à suivre et à améliorer l'organisation et le contrôle, à optimiser les processus, à réduire les inefficacités, contribuant ainsi à la qualité des produits et des services. Grâce au précieux travail quotidien, nous avons obtenu la certification ISO 9001:2015.

Nous sommes aujourd'hui présents dans 80 pays, à la recherche permanente de nouveaux marchés et de nouveaux défis.

CERTIFIED QUALITY  
MANAGEMENT SYSTEM

CQY  
CERTIQUALITY

UNI EN ISO 9001:2015

# OUR HISTORY AND OUR OBJECTIVES ARE ILLUSTRATED IN THESE PAGES.

*Our heart is in Italy, but our mind allows us to travel the world, in every sport and at all levels.*



# NOTRE HISTOIRE ET NOS OBJECTIFS RENFERMÉS DANS CES PAGES.

*Notre cœur est italien mais notre esprit nous fait voyager dans le monde entier, dans tous les sports et à tous les niveaux*

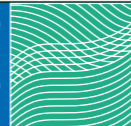


DOWNLOAD









## PERCORSO SOSTENIBILITÀ

VIVIAMO IN UN'EPOCA DOMINATA DALL'URGENZA DELLA SOSTENIBILITÀ, E IN SINTONIA CON GLI ACCORDI DI PARIGI, L'INDUSTRIA DELLA MODA SI IMPEGNA VERSO PRATICHE PIÙ SOSTENIBILI. ERREÀ SI DISTINGUE PER UN SOLIDO SISTEMA DI VALORI CHE PRIVILEGIA UN AMBIENTE DI LAVORO SANO E PROSPERO, GUIDANDO TRASFORMAZIONI POSITIVE.

## SUSTAINABILITY PATHWAY

LIVING IN AN ERA DOMINATED BY THE URGENCY OF SUSTAINABILITY, AND IN ACCORDANCE WITH THE PARIS AGREEMENT, THE FASHION INDUSTRY IS MOVING TOWARDS MORE SUSTAINABLE PRACTICES. ERREÀ STANDS OUT FOR ITS STRONG SET OF VALUES THAT PRIORITIZE A HEALTHY AND PROSPEROUS WORK ENVIRONMENT, DRIVING POSITIVE TRANSFORMATIONS.

## PARCOURS DE DURABILITÉ

VIVRE À UNE ÉPOQUE DOMINÉE PAR L'URGENCE DE LA DURABILITÉ, ET CONFORMÉMENT À L'ACCORD DE PARIS, L'INDUSTRIE DE LA MODE SE DIRIGE VERS DES PRATIQUES PLUS DURABLES. ERREÀ SE DISTINGUE PAR SON SOLIDE ENSEMBLE DE VALEURS QUI PRIVILÉGIENT UN ENVIRONNEMENT DE TRAVAIL SAIN ET PROSPÈRE, FAVORISANT DES TRANSFORMATIONS POSITIVES.

DOWNLOAD

MANIFESTO



## IL NOSTRO PERCORSO VERSO UNA PRODUZIONE PIÙ RESPONSABILE

Erreà si impegna a ridurre l'impatto ambientale delle sue operazioni attraverso diverse iniziative:

- investimenti in tecnologie per un'efficienza energetica ottimale;
- automazione e programmazione della logistica interna;
- controllo automatico dell'illuminazione;

- implementazione di sistemi di campionatura interna e visualizzazione 3D;
- utilizzo di tessuti avanzati e standardizzati;
- adozione di procedure rigide di controllo qualità;
- riutilizzo dell'imballaggio.

## OUR PATH TOWARDS A MORE RESPONSIBLE PRODUCTION

Erreà is committed to reducing the environmental impact of its operations through various initiatives:

- investments in technologies for optimal energy efficiency;
- automation and internal logistics programming;
- automated lighting control system;

- implementation of internal sampling systems and 3D visualization;
- use of advanced and standardized fabrics;
- adoption of rigorous quality control procedures;
- re-use of packaging.

## NOTRE CHEMIN VERS UNE PRODUCTION PLUS RESPONSABLE

Erreà s'engage à réduire l'impact environnemental de ses opérations grâce à diverses initiatives:

- investissements dans les technologies pour une efficacité énergétique optimale;
- automatisation et programmation de la logistique interne;
- système de contrôle automatisé de l'éclairage;

- mise en œuvre de systèmes d'échantillonnage interne et de visualisation 3D;
- utilisation de tissus avancés et standardisés;
- adoption de procédures rigoureuses de contrôle de la qualité;
- réutilisation des emballages.



⇒ -30%  
**IMPRONTA  
DI CARBONIO**

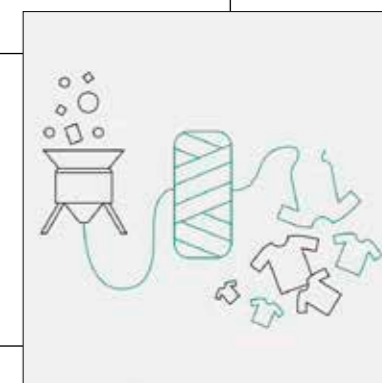
⇒ -30%  
**CARBON  
FOOTPRINT**

⇒ -30%  
**D'EMPREINTE  
CARBONE**

⇒ +20%  
**MATERIALI  
RESPONSABILI**

⇒ +20%  
**RESPONSIBLE  
MATERIALS**

⇒ +20%  
**DE MATÉRIAUX  
RESPONSABLES**

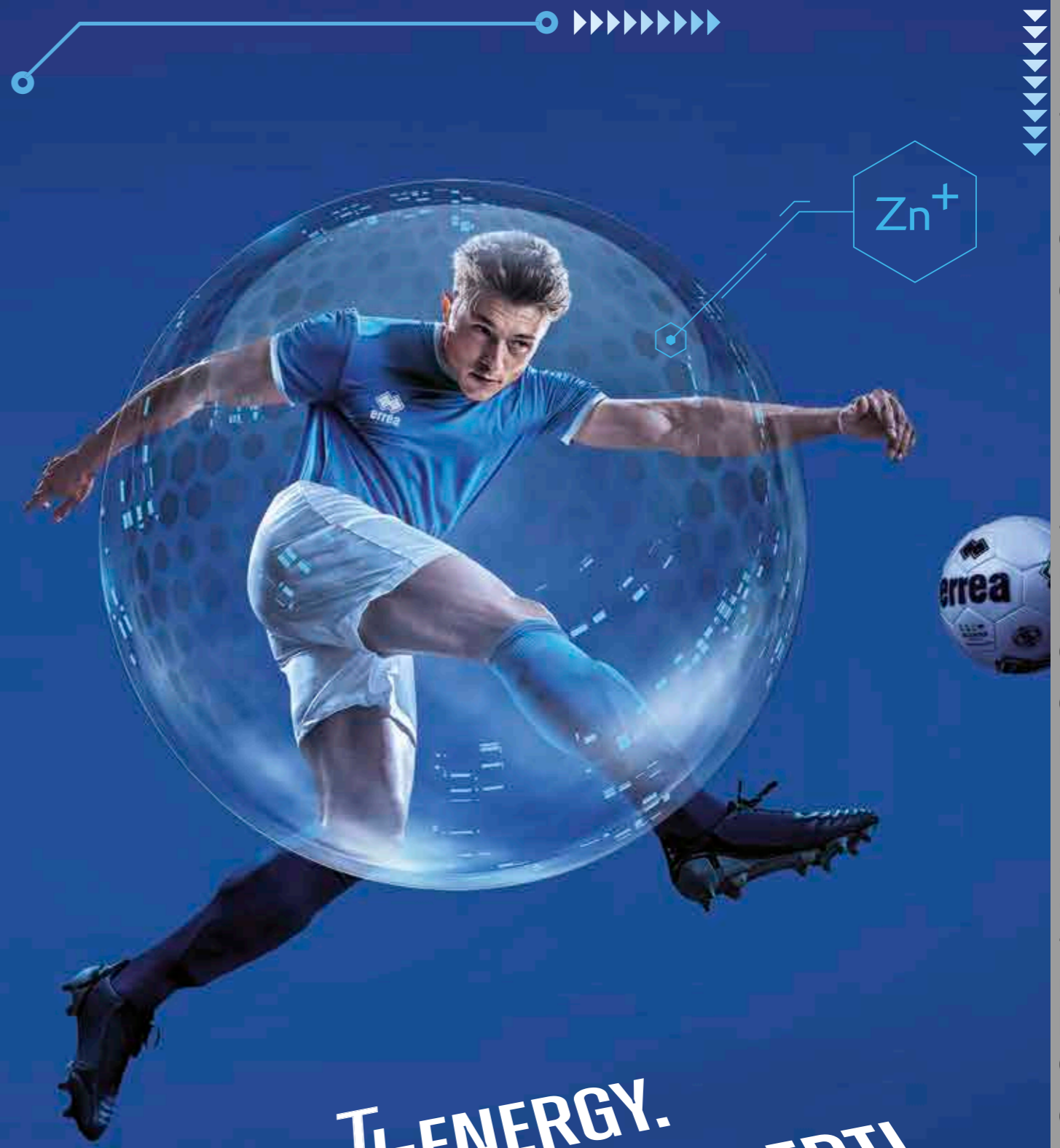


⇒ **RIDUZIONE  
DELLE EMISSIONI**

⇒ **EMISSION  
REDUCTION**

⇒ **RÉDUCTION  
DES ÉMISSIONS**






## ANTIVIRALE ANTIBATTERICO CERTIFICATO OEKO-TEX

**TI-ENERGY: IL NUOVO TESSUTO ANTIVIRALE\***  
Frutto delle più moderne tecnologie nel campo dei polimeri avanzati e dell'esperienza maturata nell'utilizzo delle nanotecnologie iniziata nel 2008, la sezione Ricerca e Sviluppo di Erreà presenta il **nuovo tessuto antivirale\* Ti-energy**.

Si tratta di un importantissimo traguardo raggiunto in ambito tessile ottenuto grazie all'impiego di due distinte tecnologie: la **presenza di nanoparticelle di ossido di zinco** incapsulate in modo permanente nelle fibre di tessuto per ottenere **efficacia antivirale\* e antibatterica** e il **trattamento Minusnine J1+** per conferire estrema impermeabilità ai liquidi. Questa duplice funzionalizzazione consente al tessuto di diventare un'efficace **barriera protettiva contro droplet, liquidi, batteri e virus**.

 **Certificato Oeko-Tex Standard 100**, Ti-energy sarà disponibile anche per tutte le società sportive che vorranno utilizzarlo per offrire una maggiore sicurezza ai propri atleti.

\*I test eseguiti secondo la ISO 18184, utilizzando il virus SARS-CoV-2, hanno mostrato che il tessuto **Ti-energy®3.0** in laboratorio ha una riduzione della carica virale del 99,85% rispetto ad un comune tessuto in poliestere dopo 6 ore di contatto con il virus.

## ANTI-VIRAL ANTIBACTERIAL OEKO-TEX CERTIFIED

**TI-ENERGY: THE NEW ANTI-VIRAL\* FABRIC**  
Fruit of state-of-the-art technologies in the field of advanced polymers and of the experience gained in the use of nanotechnologies since 2008, the Erreà research and development team is **presenting Ti-Energy, the new anti-viral\* fabric**.

This truly important achievement in the world of fabrics was made possible by the use of two separate technologies: **the zinc oxide nanoparticles**, permanently encapsulated in the fibres, **have antiviral\* and antimicrobial properties**, and the **Minusnine J1+** treatment which makes the fabric super-impermeable to liquids. This dual function allows the fabric to form an effective **protective barrier against droplets, liquids, bacteria and viruses**.

 **Oeko-Tex Standard 100 certified**, Ti-energy will also be available to all sports clubs that want to use it to enhance the safety of their athletes.

\*Tests performed in accordance with ISO 18184 using the SARS-CoV-2 virus, have proved that in the laboratory, **Ti-energy®3.0** can reduce the viral load by 99.85% compared to a standard polyester fabric six hours after coming into contact with the virus.

## ANTIVIRAL ANTIBACTÉRIEN CERTIFIÉ OEKO-TEX

**TI-ENERGY : LE NOUVEAU TISSU ANTIVIRAL\***  
Fruit des technologies les plus modernes dans le domaine des polymères avancés et de l'expérience acquise dans l'utilisation des nanotechnologies, qui a débuté en 2008, la section R&D d'Erreà Sport présente le **nouveau tissu antiviral\* Ti-Energy**.

Cet extraordinaire succès en matière textile est le fruit de l'association de deux technologies spécifiques : la **présence de nanoparticules d'oxyde de zinc encapsulées qui restent dans les fibres** de tissu pour déployer leur efficacité antivirale et antibactérienne, et le traitement **Minusnine J1+**, qui confère une imperméabilité extrême aux liquides. Cette double fonctionnalisation permet au tissu de devenir une **barrière protectrice efficace contre gouttelettes, liquides, bactéries et virus**.

 **Certifié Oeko-Tex Standard 100**, Ti-Energy sera proposé également à tous les clubs de sport qui souhaitent l'utiliser afin d'offrir davantage de sécurité à leurs athlètes.

\*Les tests réalisés selon la norme ISO 18184 avec le virus SARS-CoV-2 ont montré que, en laboratoire, le tissu **Ti-energy®3.0** assure une réduction de 99,85% de la charge virale comparé à un tissu commun en polyester au bout de 6 heures de contact avec le virus.

CON ERREÀ SPORT  
SALUTE E SICUREZZA  
CORRONO SEMPRE  
INSIEME

WITH ERREÀ SPORT  
HEALTH AND SAFETY  
ALWAYS RUN  
HAND IN HAND

AVEC ERREÀ SPORT,  
SANTÉ ET SÉCURITÉ  
VONT TOUJOURS  
ENSEMBLE !





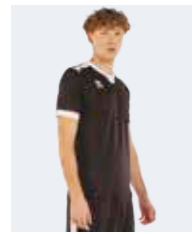












# 2025 TI-MOTHY

Adult  
**FMA20C**  
S-3XL

Junior  
**FMA21C**  
YXS-XXS-XS

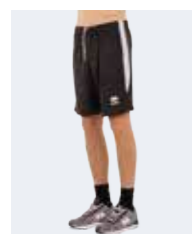


TI-ENERGY 3.0 100% polyester - 130 g/mq

- Filato Ti-energy antivirale e antibatterico
- Manica a giro
- Collo a giro con inserto e parasudore interno elastico
- Polso e orlo sul fondo

- Ti-energy anti-viral and antibacterial fabric
- Set-in sleeves
- Crew neck with insert and stretched inner neck tape
- Cuff and hem on bottom

- Ti-energy tissu anti-viral et antibactérien
- Manches montées
- Col rond avec insert et bande de propreté interne élastique
- Poignet et ourlet au le bas



# 2025 TI-MOTHY

Adult  
**FPA10Z**  
S-XXL

Junior  
**FPA11Z**  
YXS-XXS-XS



TI-ENERGY 3.0 100% polyester - 130 g/mq

- Filato Ti-energy antivirale e antibatterico
- Elastico in vita con laccioli regolabili
- Inserto laterale in contrasto

- Ti-energy anti-viral and antibacterial fabric
- Stretched waistband and adjustable drawstring
- Contrasting side insert

- Ti-energy tissu anti-viral et antibactérien
- Élastique à la taille et lacets réglables
- Insert latérale en contraste



00280  
white/navy



00260  
white/blue



00500  
red/white



03100  
maroon/white



00900  
green/white



01500  
blue/white



01900  
navy/white



02500  
black/white







2027 **MARK**

Adult **GM1VOC**  
S-3XL  
Junior **GM1VIC**  
YXS-XXS-XS



SKIN 100% polyester - 125 g/mq



- Manica a giro con polso
- Collo a giro e parasudore interno elastico
- Inserto in tessuto Skin
- Fondo maglia con orlo



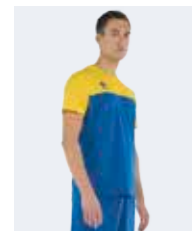
- Set-in sleeves with cuffs
- Crew neck with stretched inner neck tape
- Skin fabric inserts
- Hemmed shirt bottom

- Manches montées avec poignets
- Col rond et bande de propreté interne élastique
- Empiècements en tissu Skin
- Bas du maillot avec ourlet









# 2025 BRANDON

Adult **GM0A0C** S>XXL  
Junior **GM0A1C** YXS-XXS-XS



SKIN 100% polyester - 125 g/mq

- Maglia bicolore taglia e cucì
- Manica a giro
- Girocollo
- Parasudore elastico interno
- Manica corta con orlo

- Two-colour cut and stitch shirt
- Set-in sleeves
- Round neck
- Stretched inner neck tape
- Short sleeves with hem

- Maillot bicolore patchwork
- Manches montées
- Col rond
- Bande de propreté interne
- Manches courtes avec ourlet

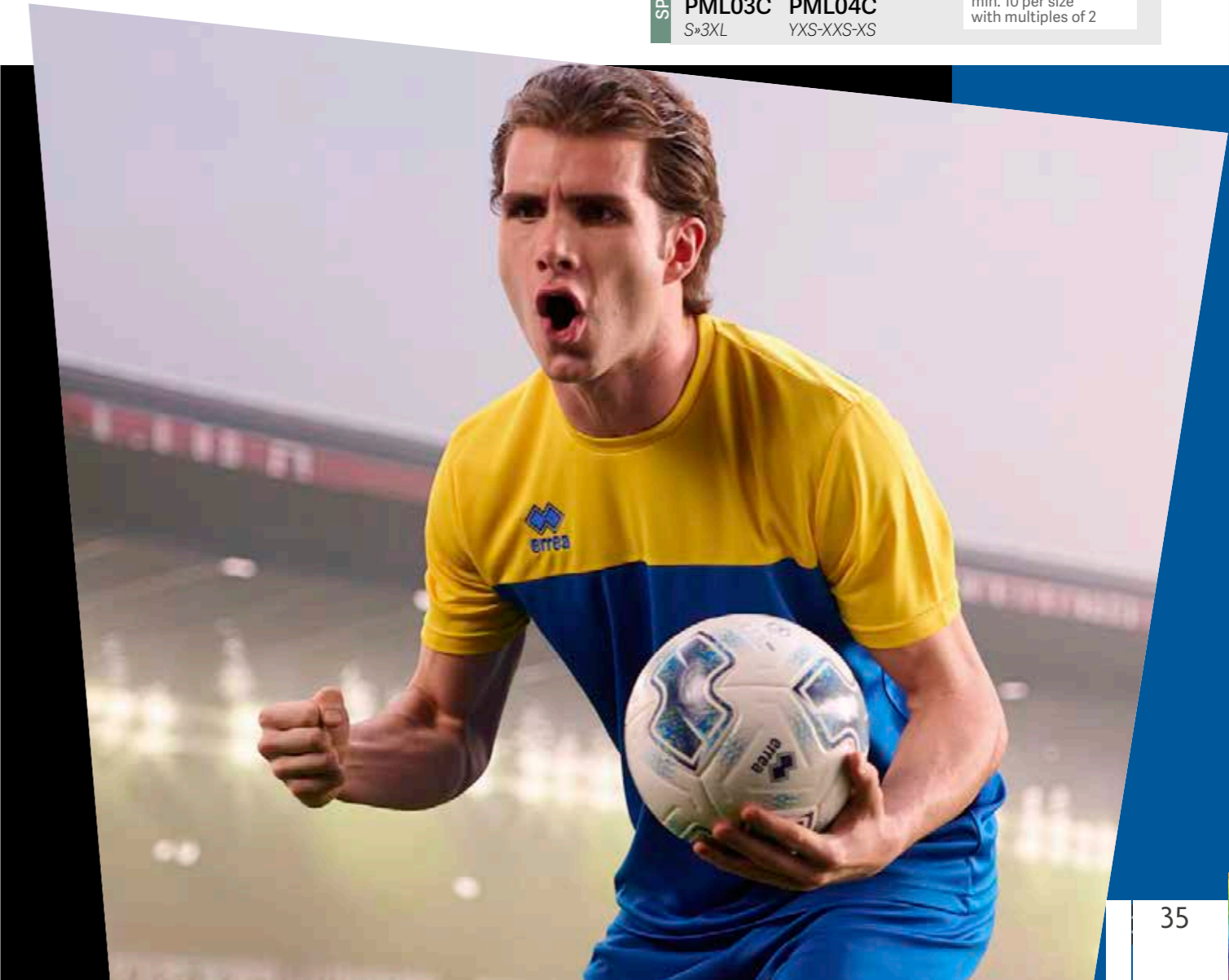


**BRENDA**  
IT FITS LIKE CORINNE

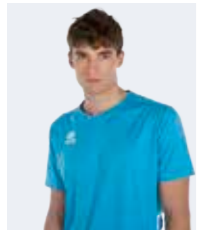
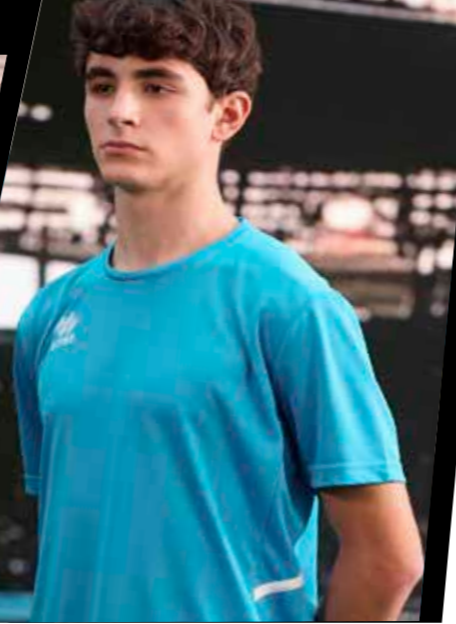
SPECIAL ORDER

Adult **PML03C** S>3XL  
Junior **PML04C** YXS-XXS-XS

MIN. 50 PCS  
min. 10 per size  
with multiples of 2







## 2029 MARVIN

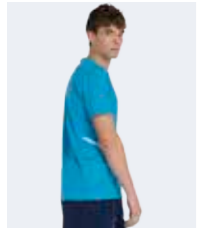
**Adult** **GM1FOC** S-3XL  
**Junior** **GM1F1C** YXS-XXS-XS  
**Kid** **GM1F2C** 2YXS



SKIN 100% polyester - 125 g/mq



- Manica a giro
- Collo a giro con parasudore interno elastico
- Inserti laterali per una migliore vestibilità
- Sbienco sui fianchi in tessuto Skin



- Set-in sleeves
- Crew neck with stretched inner neck tape
- Side panels for better fit
- Skin fabric Bias binding on sides
- Manches montées
- Col rond avec bande de propreté interne élastique
- Empiècements latéraux pour une meilleure ligne
- Biais sur les côtés en tissu Skin









**05210**  
white/blue/navy



**00410**  
white/navy/red



**00670**  
red/black/white



**02850**  
orange/black/white



**00870**  
yellow/blue/white



**05660**  
yellow/black/white



**01070**  
green/black/white



**03260**  
maroon/black/white



**06710**  
blue/white/navy



**07320**  
navy/white/yellow



**04210**  
navy/white/red



**08140**  
black/white/anthracite



## 2026 CORINNE

Adult **GM1E0C** Junior **GM1E1C**  
S-XXL YXS-XXS-XS



MUNDIAL 100% polyester - 145 g/mq  
SKIN 100% polyester - 125 g/mq

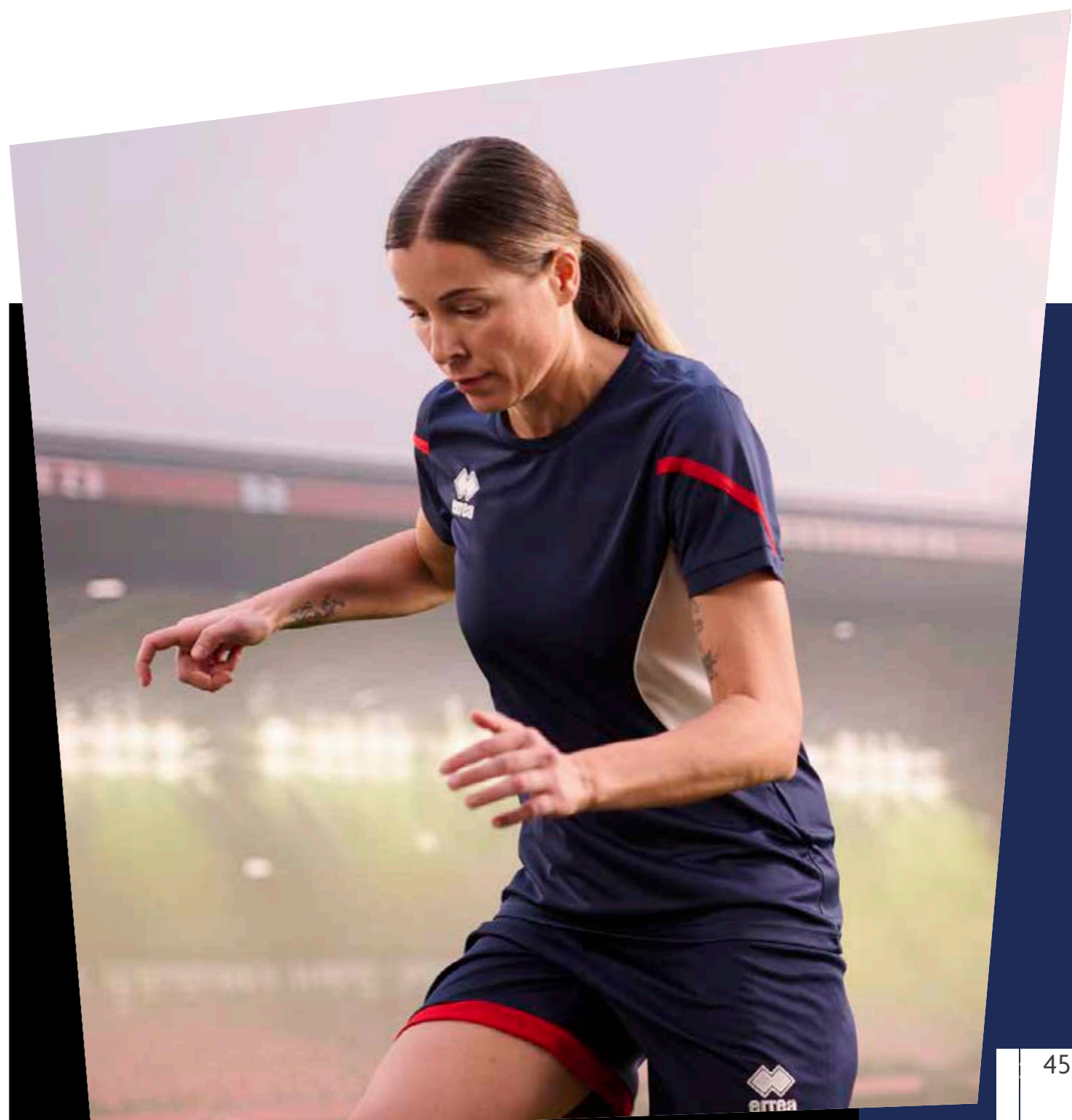
- Manica a giro con polso
- Collo a giro e parasudore interno elastico
- Inserto sbieco in tessuto Skin
- Fondo maglia con orlo



- Set-in sleeves with cuff
- Crew neck with stretched inner neck tape
- Skin fabric inserts and bias binding
- Hemmed shirt bottom



- Manches montées avec poignets
- Col rond avec bande de propreté interne élastique
- Empiècements et biais en tissu Skin
- Bas du maillot avec ourlet







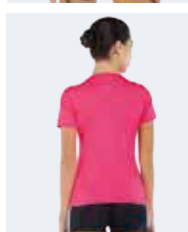


## 2029 **MARION**

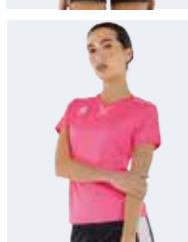
Adult **EM1T0C** S-XXL  
Junior **EM1T1C** YXS-XXS-XS



UTILITY 100% polyester - 145 g/mq



- Manica a giro
- Collo a giro con parasudore interno elastico
- Cuciture con copertura a tre aghi in contrasto
- Fianchette laterali per una migliore vestibilità



- Set-in sleeves
- Crew neck with stretched inner neck tape
- Three-needle over stitching in contrasting colour
- Side panels for better fit

- Manche montée
- Col rond avec bande de propreté interne élastique
- Coutures de couverture à trois aiguilles, en contraste
- Empiècements latéraux pour une meilleure ligne



# 2029 TRANSFER 3.0



Adult **FP740Z**  
S-XXL  
Junior **FP741Z**  
XXS-XS



MUNDIAL 100% polyester - 145 g/mq

- Pantalo corto in transfer
- Elastico in vita e laccioli regolabili
- Profilo laterale in contrasto

Fino ad esaurimento scorte  
While stocks last  
Jusqu'à épuisement du stock

- Short sublimé
- Stretched waistband and adjustable drawstring
- Contrasting side trim

- Short sublimé
- Élastique à la taille et lacets réglables
- Profil latéral en contraste



00500 red/white  
01500 blue/white  
01900 navy/white  
02500 black/white



00260 white/blue  
00340 white/maroon  
00760 yellow/blue  
01920 navy/yellow



01910 navy/red  
00900 green/white  
02520 black/yellow

# 2029 BOLTON



Adult **D195**  
S-XXL  
Junior **D196**  
YXS-XXS-XS



MUNDIAL 100% polyester - 145 g/mq

- Elastico in vita e laccioli regolabili
- Inserto laterale in contrasto

- Stretched waistband and adjustable drawstring
- Contrasting side insert

- Élastique à la taille et lacets réglables
- Insert latérale en contraste



000021 white/red  
000023 white/green  
000026 white/blue  
000028 white/navy  
000031 white/black



000050 red/white  
000090 green/white  
000150 blue/white  
000190 navy/white  
000250 black/white



000191 navy/red  
000192 navy/yellow  
000252 black/yellow  
000251 black/red  
000310 maroon/white



000058 red/navy  
000078 yellow/navy

# 2025 TI-MOTHY



Adult **FPA10Z**  
S-XXL  
Junior **FPA11Z**  
YXS-XXS-XS



TI-ENERGY 3.0 100% polyester - 130 g/mq

- Filato Ti-energy antivirale e antibatterico
- Elastico in vita con laccioli regolabili
- Inserto laterale in contrasto

- Ti-energy anti-viral and antibacterial fabric
- Stretched waistband and adjustable drawstring
- Contrasting side insert

- Ti-energy tissu anti-viral et antibactérien
- Élastique à la taille et lacets réglables
- Insert latérale en contraste



00280 white/navy  
00260 white/blue  
00500 red/white  
03100 maroon/white



00900 green/white  
01500 blue/white  
01900 navy/white  
02500 black/white

# 2029 EDO



Adult **GP0B0Z**  
S-XXL  
Junior **GP0B1Z**  
YXS-XXS-XS



MUNDIAL 100% polyester - 145 g/mq

- Elastico in vita con laccioli regolabili
- Orlo sul fondo

- Stretched waistband with adjustable drawstring
- Hemmed bottom

- Élastique à la taille et lacets réglables
- Ourlet dans le bas



00010 white  
00150 maroon  
00020 red  
00130 orange  
03340 orange fluo



00030 yellow  
03310 yellow fluo  
03320 green fluo  
00040 green  
35990 cyan

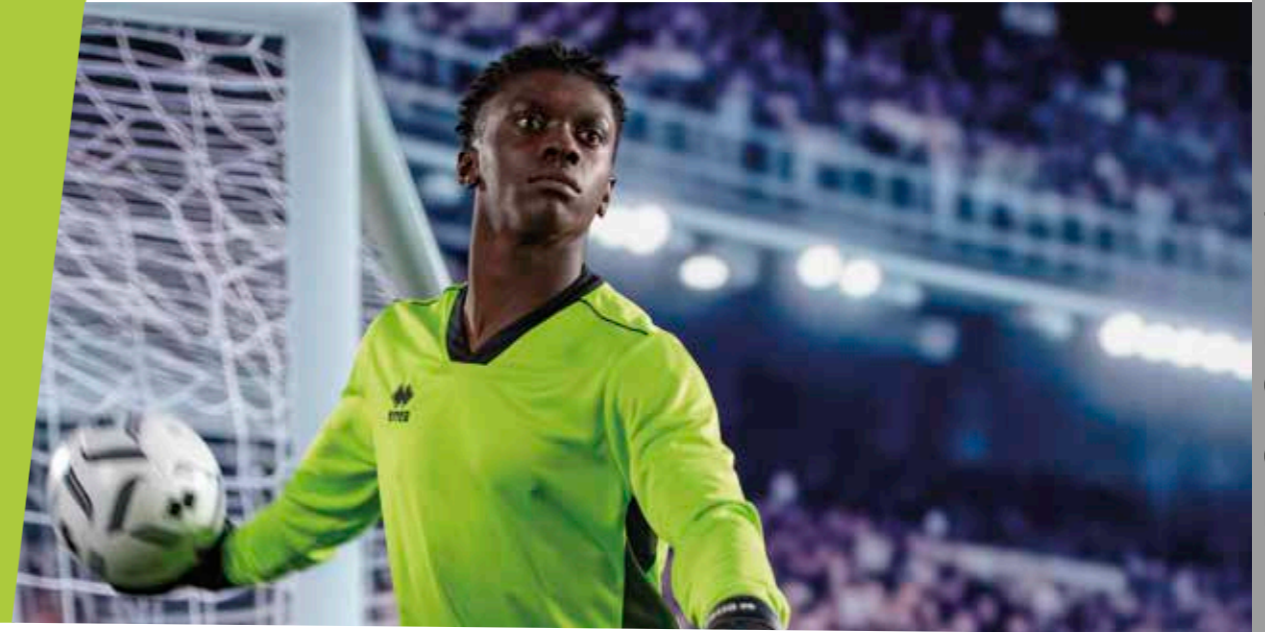


00070 blue  
00090 navy  
00120 black  
03330 fuchsia fluo









04930  
orange fluo/black



04920  
yellow fluo/black



59120  
green fluo/black



35710  
cyan/black



00120  
black



## 2025 JERZY

Adult **GM2FOL**  
S-XXL  
Junior **GM2F1L**  
YXS-XXS-XS



MUNDIAL 100% polyester - 145 g/mq  
MESH 6TP 100% polyester - 100 g/mq

- Manica a giro
- Collo a V in costina con parasudore interno elastico
- Inserto laterale in tessuto Mesh
- Maglia bicolore taglia e cucii
- Junior: manica con imbottitura

- Set-in sleeves
- Ribbed V-neck with stretched inner neck tape
- Mesh fabric side panel
- Two-colour cut and stitch shirt
- Junior: sleeves with padding

- Manches montées
- Col V en bord-côte avec bande de propreté interne
- Pièce latérale en tissu Mesh
- Maillot bicolore patchwork
- Junior: manches avec rembourrage



STANDARD 100  
074744.0  
CENTROCOT





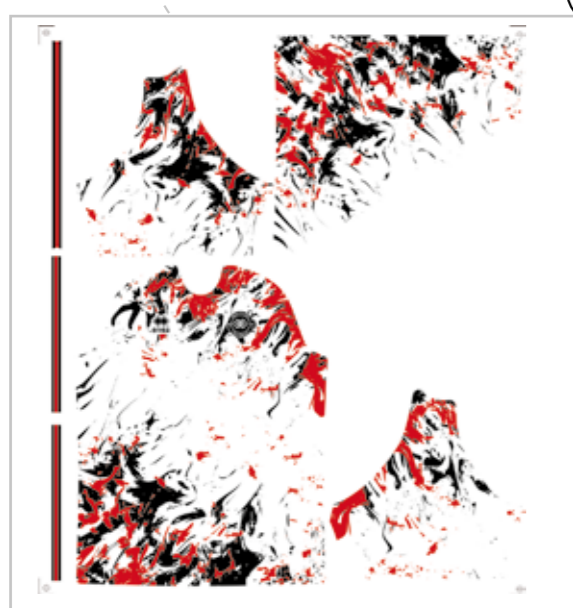






RESERVED AREA FOR RESELLERS

# FULL CUSTOM - COMPETITION



### UN CAPO UNICO REALIZZATO PER LA TUA SOCIETÀ

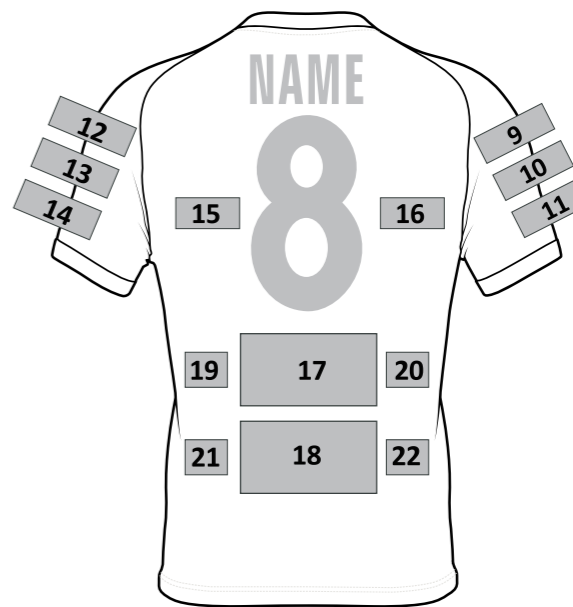
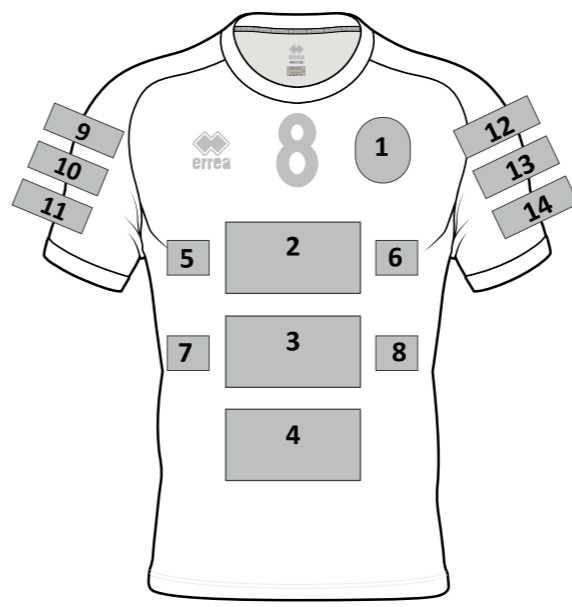
- ① Identificazione del modello, tessuto e vestibilità con cui realizzare il capo personalizzato.
- ② Realizzazione dei disegni da parte dell'ufficio Design Erreà.
- ③ Confezione del capo personalizzato completo di eventuali sponsor e nomi/numeri.

### AN ORIGINAL, ONE-OFF GARMENT PRODUCED FOR YOUR ORGANIZATION.

- ① Identification of the model, fabric and fit with which to produce your customized garment.
- ② Development of designs by the Erreà Design Office.
- ③ Manufacture of the customized garment complete with possible sponsors and names/numbers.

### UN ARTICLE UNIQUE RÉALISÉ POUR VOTRE SOCIÉTÉ.

- ① Identification du modèle, du tissu et de la ligne à partir desquels l'article personnalisé sera réalisé.
- ② Réalisation des dessins par le Bureau Design d'Erreà.
- ③ Confection de l'article personnalisé, avec indication d'éventuels sponsors ou noms/numéros.



#### FRONT

- ① BADGE (h x w cm) .....
- NUMBER (cm h) .....
- ② LOGO (h x w cm) .....
- ③ LOGO (h x w cm) .....
- ④ LOGO (h x w cm) .....
- ⑤ LOGO (h x w cm) .....
- ⑥ LOGO (h x w cm) .....
- ⑦ LOGO (h x w cm) .....
- ⑧ LOGO (h x w cm) .....

#### RIGHT SLEEVE

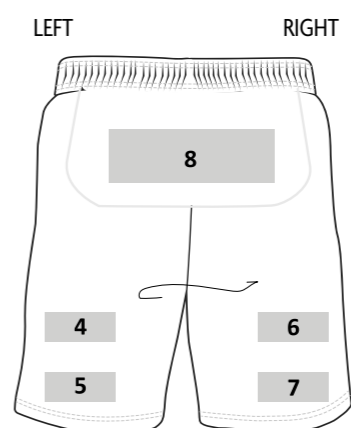
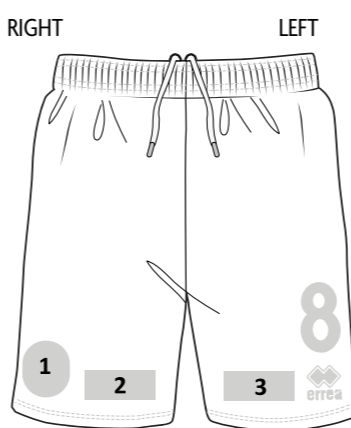
- ⑨ LOGO (h x w cm) .....
- ⑩ LOGO (h x w cm) .....
- ⑪ LOGO (h x w cm) .....

#### LEFT SLEEVE

- ⑫ LOGO (h x w cm) .....
- ⑬ LOGO (h x w cm) .....
- ⑭ LOGO (h x w cm) .....

#### BACK

- NAME cm h .....
- NUMBER cm h .....
- ⑮ LOGO (h x w cm) .....
- ⑯ LOGO (h x w cm) .....
- ⑰ LOGO (h x w cm) .....
- ⑱ LOGO (h x w cm) .....
- ⑲ LOGO (h x w cm) .....
- ⑲ LOGO (h x w cm) .....
- ⑲ LOGO (h x w cm) .....
- ⑲ LOGO (h x w cm) .....
- ⑲ LOGO (h x w cm) .....
- ⑲ LOGO (h x w cm) .....



#### FRONT

- ① BADGE (h x w cm) .....
- ② LOGO (h x w cm) .....
- ③ LOGO (h x w cm) .....
- NUMBER cm h .....

#### BACK

- ④ LOGO (h x w cm) .....
  - ⑤ LOGO (h x w cm) .....
  - ⑥ LOGO (h x w cm) .....
  - ⑦ LOGO (h x w cm) .....
  - ⑧ LOGO (h x w cm) .....
- ONLY SHORT "VIGOR/TRENTINO"

#### CONSIGLI PRATICI

- 1. Invia eventuali grafiche in formato vettoriale.
- 2. Invia loghi in formato .pdf/.ai/.eps
- 3. Possibilità di inserire nomi/numeri all'interno dei fogli di stampa. Invia le indicazioni (taglia/nome/numero) al momento della conferma del disegno.

#### RECOMMENDATIONS

- 1. Send any graphic designs in vector format.
- 2. Send logos in .pdf/.ai/.eps
- 3. You can also enter names/numbers on print sheets. Send the information (size/name/number) at the time of confirming the design.

#### CONSEILS PRATIQUES

- 1. Envoi d'éventuels graphismes au format vectoriel.
- 2. Envoi des logos au format .pdf/.ai/.eps
- 3. Possibilité d'entrer des noms/numéros dans les feuilles d'impression. Envoi des indications (taille/nom/numéro) lors de la confirmation du dessin.

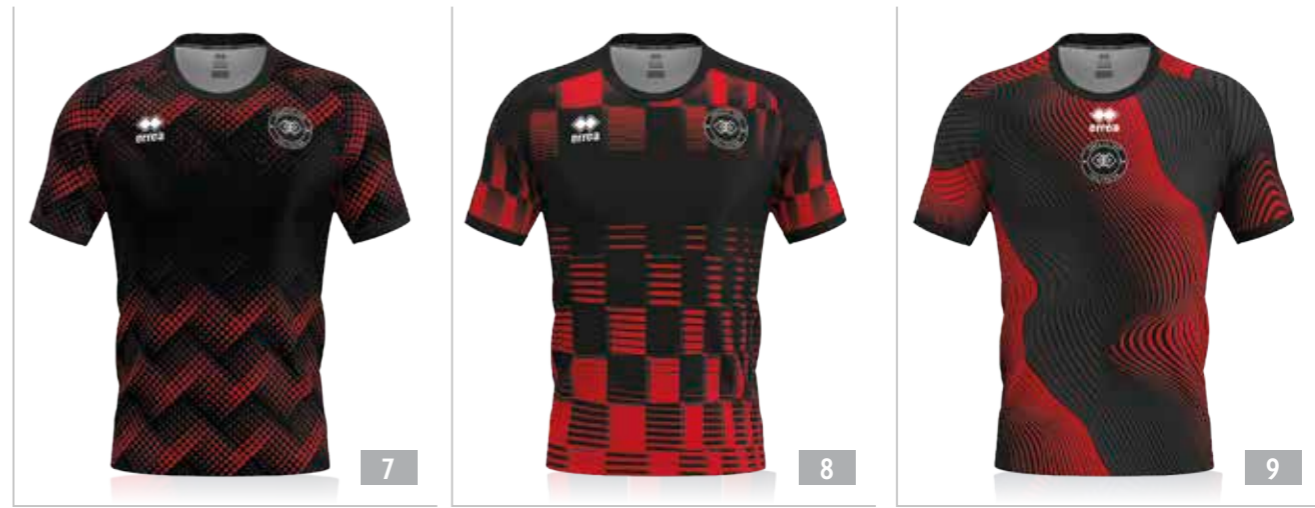
FULL\_CUSTOM - Competition

# PARMA 3.0

MIN. 12 PCS MIN. 2 PER SIZE WITH MULTIPLES OF 2

ADULT - FM813C / FM813L  
JUNIOR - FM814C / FM814L

- MUNDIAL 100% POLYESTER - 145 g/mq
- TI-ENERGY 100% POLYESTER - 130 g/mq
- FUTURE 100% polyester - 140 g/mq



# DREAM WOMAN

MIN. 12 PCS MIN. 2 PER SIZE WITH MULTIPLES OF 2  
SENZA INSERTI - WITHOUT INSERTS - SANS INSERTS

ADULT - PMJL3C / PMJL3L  
JUNIOR - PMJL4C / PMJL4L

- MUNDIAL 100% POLYESTER - 145 g/mq
- TI-ENERGY 100% POLYESTER - 130 g/mq
- FUTURE 100% polyester - 140 g/mq





# STRIP

MIN. 12 PCS MIN. 2 PER SIZE WITH MULTIPLES OF 2

ADULT - GMB3C / GMB3L  
JUNIOR - GMB4C / GMB4L

○ SKIN 100% POLYESTER - 125 g/mq



# TRENTINO EVO

MIN. 12 PCS MIN. 2 PER SIZE WITH MULTIPLES OF 2  
CON INSERTI - WITH INSERTS - AVEC INSERTS

ADULT - PMM53C  
JUNIOR - PMM54C

○ PREMIER 82% POLYESTER 18% ELASTANE - 165 g/mq  
○ SENSIBILITY 82% RECYCLED POLYESTER 18% ELASTANE - 165 g/mq

# TRENTINO NEXT

MIN. 12 PCS MIN. 2 PER SIZE WITH MULTIPLES OF 2  
CON INSERTI - WITH INSERTS - AVEC INSERTS

ADULT - PMME3C  
JUNIOR - PMME4C

○ MUNDIAL 100% POLYESTER - 145 g/mq  
○ FUTURE 100% POLYESTER - 140 g/mq



FULL\_CUSTOM - Competition

# ALEX

MIN. 12 PCS MIN. 2 PER SIZE WITH MULTIPLES OF 2

ADULT - GMOK3C / GMOK3L  
JUNIOR - GMOK4C / GMOK4L

○ MUNDIAL 100% POLYESTER - 145 g/mq  
○ TI-ENERGY 100% POLYESTER - 130 g/mq  
○ FUTURE 100% POLYESTER - 140 g/mq

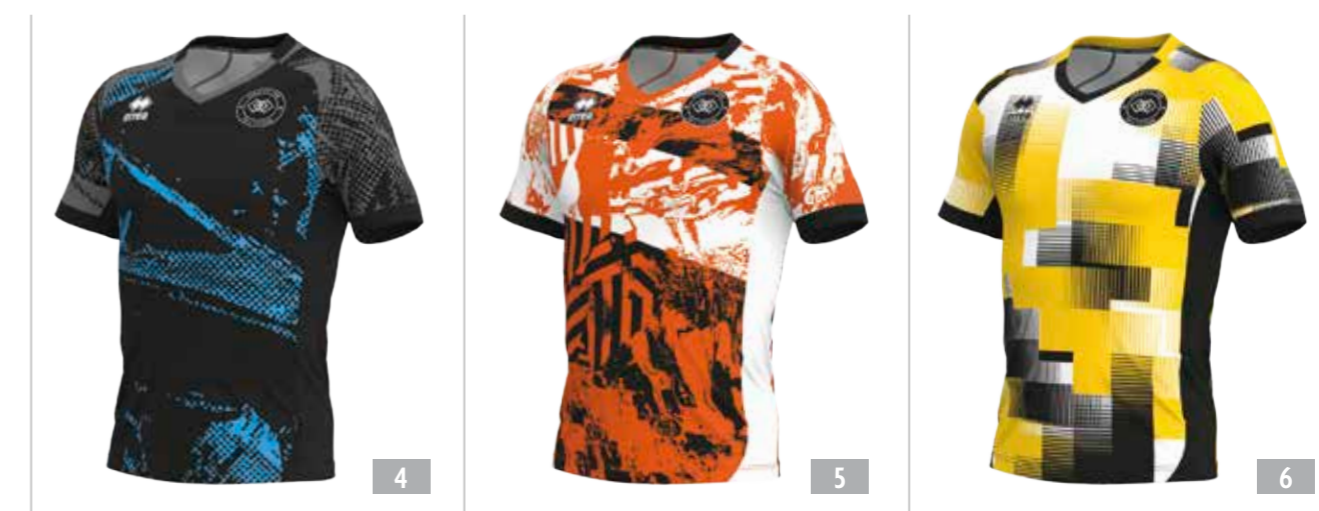


# LUCAS

MIN. 12 PCS MIN. 2 PER SIZE WITH MULTIPLES OF 2  
SENZA INSERTI - WITHOUT INSERTS - SANS INSERTS

ADULT - PMJD3C / PMJD3L  
JUNIOR - PMJD4C / PMJD4L

○ MUNDIAL 100% POLYESTER - 145 g/mq  
○ TI-ENERGY 100% POLYESTER - 130 g/mq  
○ FUTURE 100% POLYESTER - 140 g/mq

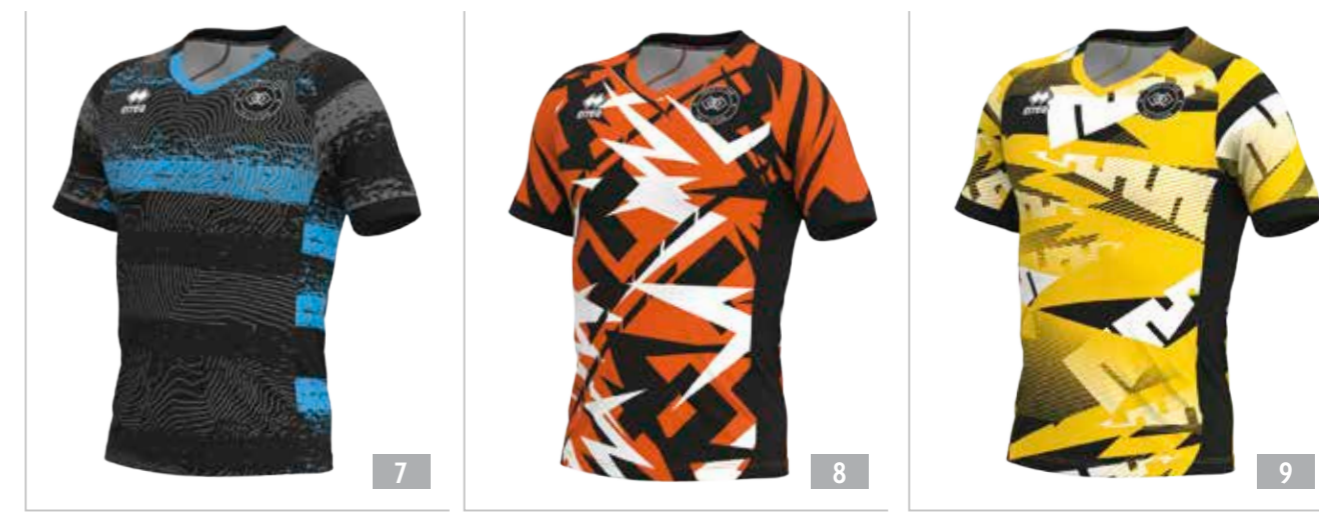


# LENNY WOMAN

MIN. 12 PCS MIN. 2 PER SIZE WITH MULTIPLES OF 2  
SENZA INSERTI - WITHOUT INSERTS - SANS INSERTS

ADULT - PMY3C / PMY3L  
JUNIOR - PMY4C / PMY4L

○ MUNDIAL 100% POLYESTER - 145 g/mq  
○ TI-ENERGY 100% POLYESTER - 130 g/mq



**BESSY RAY** WOMAN

MIN. 12 PCS MIN. 2 PER SIZE WITH MULTIPLES OF 2  
 SENZA INSERTI - WITHOUT INSERTS - SANS INSERTS

ADULT - PM803C  
 JUNIOR - PM804C

- PREMIER 82% POLYESTER 18% ELASTANE - 165 g/mq
- SENSIBILITY 82% RECYCLED POLYESTER 18% ELASTANE - 165 g/mq

ADULT - PM803C  
 JUNIOR - PM804C

- MUNDIAL 100% POLYESTER - 145 g/mq
- FUTURE 100% polyester - 140 g/mq



**NEW SKIN**

MIN. 12 PCS MIN. 2 PER SIZE WITH MULTIPLES OF 2

ADULT - A245  
 JUNIOR - A246

- SKIN 100% POLYESTER - 125 g/mq
- MUNDIAL 100% POLYESTER - 145 g/mq



NEW SKIN  
STANDARD LENGTH

MAXI SKIN  
LONGER LENGTH



**VICTOR**

MIN. 12 PCS MIN. 2 PER SIZE WITH MULTIPLES OF 2

ADULT - GP0E3Z  
 JUNIOR - GP0E4Z

- MUNDIAL 100% POLYESTER - 145 g/mq
- UTILITY 100% POLYESTER - 145 g/mq



**MEGAN** WOMAN

MIN. 12 PCS MIN. 2 PER SIZE WITH MULTIPLES OF 2  
 CON INSERTI - WITH INSERTS - AVEC INSERTS

ADULT - PMBQ3C  
 JUNIOR - PMBQ4C

- PREMIER 82% POLYESTER 18% ELASTANE - 165 g/mq
- SENSIBILITY 82% RECYCLED POLYESTER 18% ELASTANE - 165 g/mq

ADULT - PMBQ3C  
 JUNIOR - PMBQ4C

- MUNDIAL 100% POLYESTER - 145 g/mq
- FUTURE 100% polyester - 140 g/mq



**TRANSFER 3.0**

MIN. 12 PCS MIN. 2 PER SIZE WITH MULTIPLES OF 2

ADULT - FP743Z  
 JUNIOR - FP744Z

- MUNDIAL 100% POLYESTER - 145 g/mq
- TI-ENERGY 100% POLYESTER - 130 g/mq



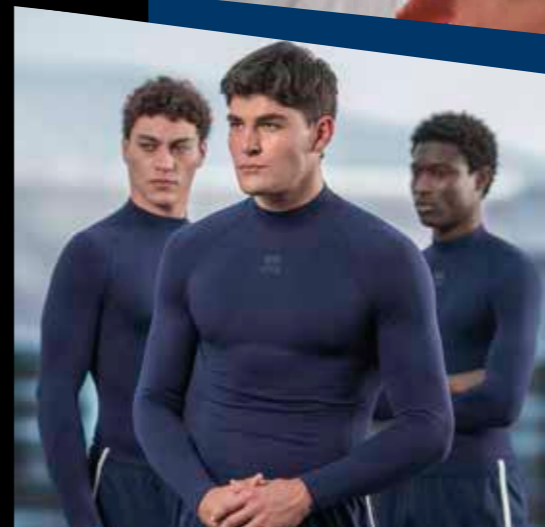
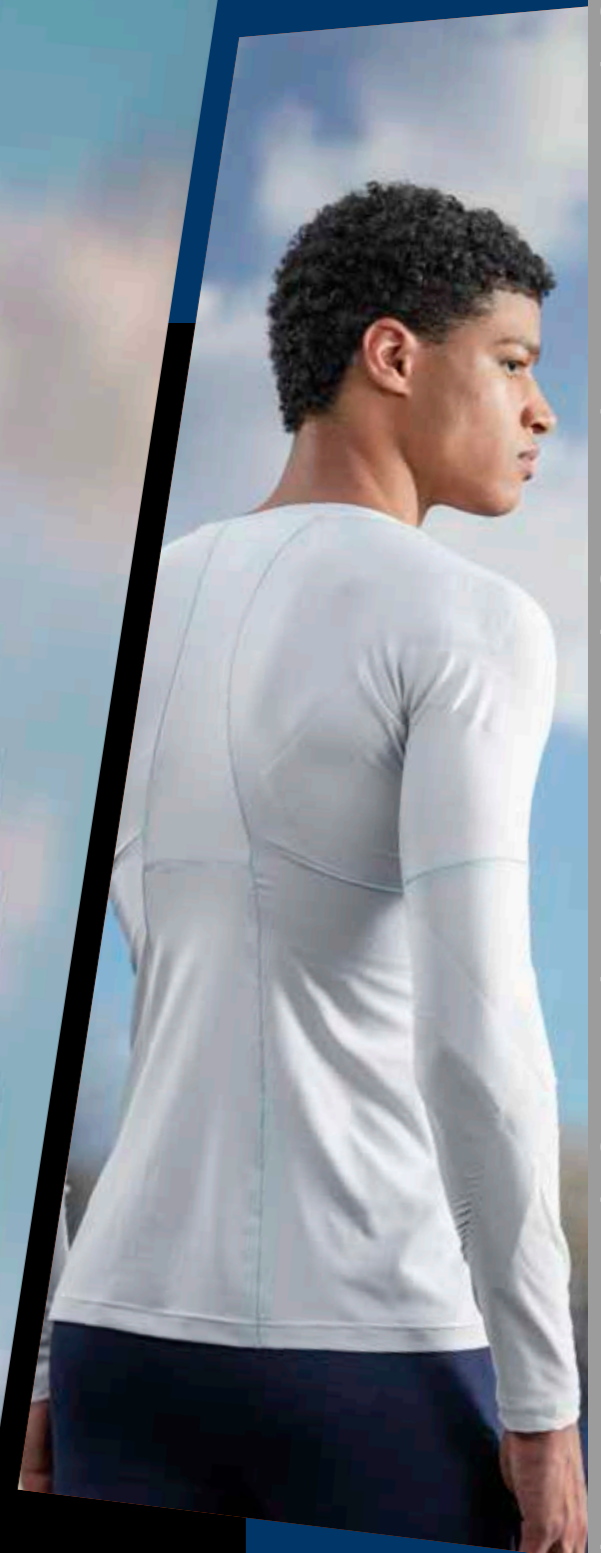
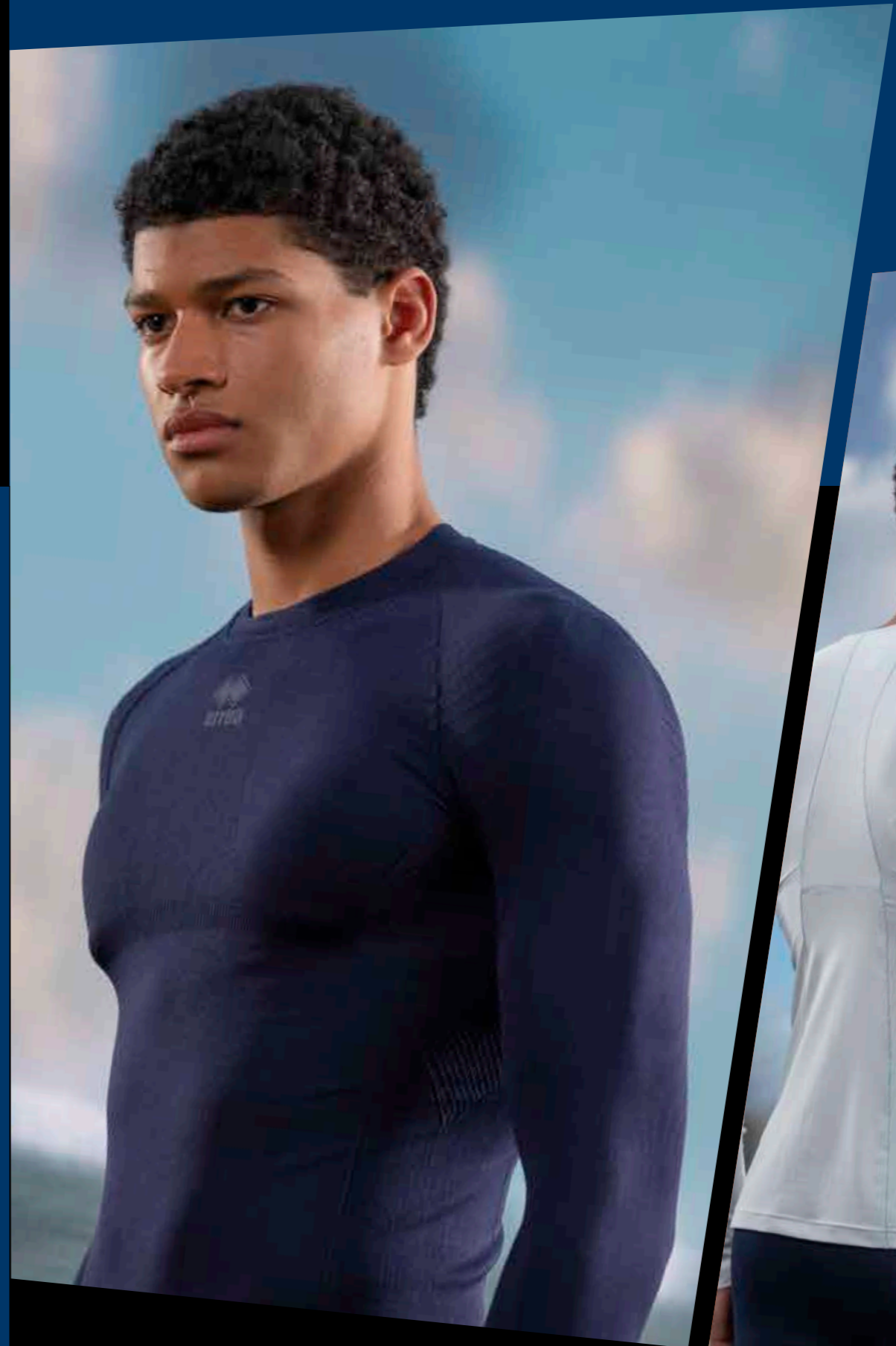
**BOLTON**

MIN. 12 PCS MIN. 2 PER SIZE WITH MULTIPLES OF 2

ADULT - D195  
 JUNIOR - D196

- MUNDIAL 100% POLYESTER - 145 g/mq
- TI-ENERGY 100% POLYESTER - 130 g/mq





# BASE LAYER



## 2026 ADERYN 55

Adult  
**UMOJOC**

S-XXL



PREMIER 82% polyester 18% elastane - 165 g/mq

- Esoscheletro interno a supporto posturale
- Sostegno mirato per deltoide, tricipite e trapezio, articolazioni delle spalle e cuffie dei rotatori
- Vestibilità aderente
- Costruzione con due tessuti a elasticità differenziata per fornire un sostegno mirato e garantire leggerezza, traspirabilità e resistenza dove serve.
- Fibra leggera e traspirante
- Collo a V
- Nessuna cucitura sotto le ascelle
- Maniche rifinite con tecnologia seamless

- Internal exoskeleton for postural support
- Targeted support for the deltoid, triceps, and trapezius, shoulder joints, and rotator cuffs
- Slim fit
- Construction with two fabrics of differentiated elasticity to provide targeted support and ensure lightness, breathability, and resistance where needed
- Lightweight and breathable fiber
- V-neck
- No seams under the armpits
- Sleeves finished with seamless technology

- Exosquelette interne pour le soutien postural
- Soutien ciblé pour le deltoïde, le triceps et le trapèze, les articulations des épaules et les coiffe des rotateurs
- Coupe ajustée
- Conception avec deux tissus à élasticité différenciée pour offrir un soutien ciblé et garantir légèreté, respirabilité et résistance là où c'est nécessaire
- Fibre légère et respirante
- Col en V
- Aucune couture sous les aisselles
- Manches finies avec la technologie seamless



37080  
white/cyan







## 2026 KARIL LS

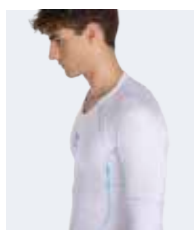
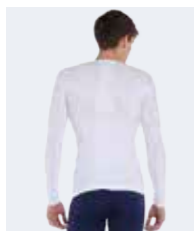
Adult  
**UMOJOL**  
S-XXL



PREMIER 82% polyester 18% elastane - 165 g/mq



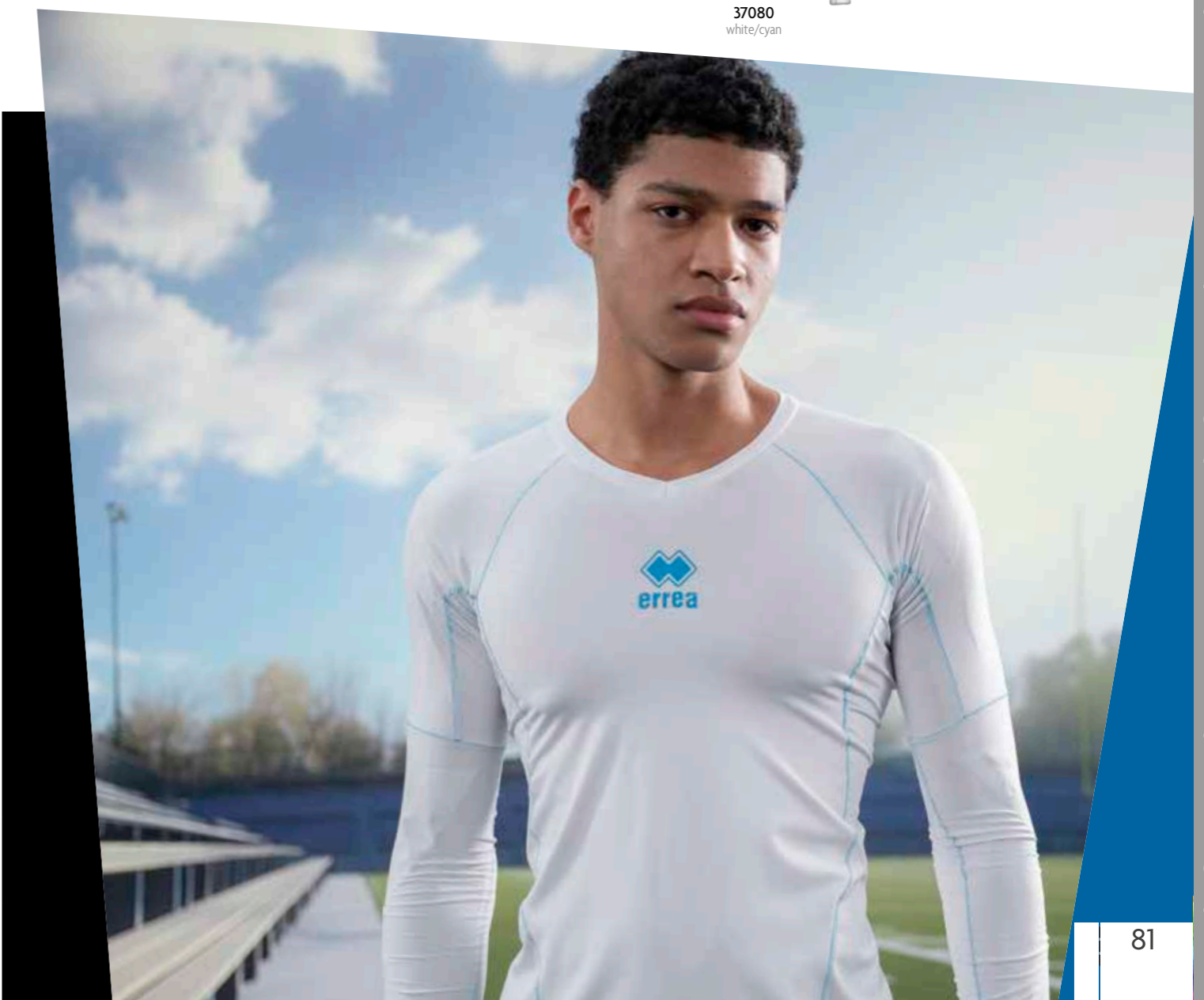
37080  
white/cyan



- Vestibilità aderente per massimo comfort e libertà di movimento durante l'attività sportiva
- Collo a giro progettata per migliorare postura e rendimento
- Esoscheletro a supporto posturale
- Supporto mirato per i muscoli della parte alta della schiena, articolazioni delle spalle e cuffie dei rotatori
- Supporto extra per gomiti e muscoli delle braccia
- Fasce elastiche interne a sostegno del deltoide, tricipite, trapezio
- Riduzione della vibrazione muscolare
- Traspirante
- Cuciture ultra piatte effettuate con tecnologia giapponese
- Film termoadesivo aggrappante
- Tessuto contenente elastomero per una miglior vestibilità
- Tape con certificato Standard 100 by Oeko - Tex

- Close-fitting for maximum comfort during sports activities
- Round neck designed to improve posture and performance
- Exoskeleton for postural support
- Support for muscles in the upper back, shoulders' joints, and rotators' cuffs
- Extra support for elbows and arm muscles
- Internal stretched bands to support deltoids, triceps, and trapezius
- Muscles vibration reduction
- Breathable
- Ultra-flat seams made with Japanese technology
- Adhesive thermofilm
- Fabric containing elastomer for a better fit
- Tape with Standard 100 by Oeko - Tex certification

- Coupe ajustée pour un confort maximal et une liberté de mouvement pendant l'activité sportive
- Col rond conçu pour améliorer la posture et les performances
- Exosquelette pour un soutien postural
- Soutien ciblé pour les muscles du haut du dos, les articulations des épaules et les rotateurs
- Support supplémentaire pour les coudes et les muscles des bras
- Bandes élastiques internes pour soutenir le deltoïde, le triceps et le trapèze
- Réduction des vibrations musculaires
- Respirant
- Coutures ultra-plates réalisées avec une technologie japonaise
- Thermofilm adhésif
- Tissu contenant de l'élastomère pour un meilleur ajustement
- Ruban avec certification Standard 100 by Oeko - Tex





## 2026 ACTIVE TENSE LITE

Adult  
**UM010C**  
S>XXL

Junior  
**UM011C**  
XS



94% POLYAMIDE - 6% ELASTANE

Fino ad esaurimento scorte  
While stocks last  
Jusqu'à épuisement du stock

- Maglia collo a giro, dotata di zone a tensione differenziata ed esoscheletro in resina
- L'exoscheletro in resina si concentra sulla parte superiore del corpo con lo scopo di stabilizzare le spalle e migliorare la postura
- Le fasce elastiche interne sono studiate e realizzate per sostenere il deltoide e il trapezio
- Le zone a tensione differenziata grazie ai diversi attriti determinano effetti stabilizzatori sui muscoli e sulle articolazioni

- Crew neck shirt with different tension zones and resin exoskeleton
- The resin exoskeleton is focused on the upper part of the body and aim to stabilizing the shoulders and improving posture
- The inner stretched bands are designed and produced to support deltoids and the trapezoid muscle
- The different tension zones, because of different frictions, have stabilizing effects on muscles and joints

- Maillot col rond à manches courtes avec des zones à tension différenciée et un exosquelette en résine
- L'exosquelette en résine est positionné et se concentre sur la partie supérieure du corps dans le but de stabiliser les épaules et d'améliorer la posture
- Les bandes élastiques internes ont été étudiées et réalisées pour soutenir le deltoïde et le trapèze
- Les zones à tension différenciée grâce aux différents frottements déterminent des effets stabilisateurs sur les muscles et sur les articulations



00120  
black



00010  
white

## 2026 ACTIVE TENSE LITE

Adult  
**UPOG0Z**  
S>XXL

Junior  
**UPOG1Z**  
XS



94% POLYAMIDE - 6% ELASTANE

Fino ad esaurimento scorte  
While stocks last  
Jusqu'à épuisement du stock

- Dotato di zone a tensione differenziata ed esoscheletro in resina
- L'exoscheletro in resina si concentra sui principali muscoli della coscia per migliorarne la funzionalità
- Le fasce elastiche interne sono realizzate per sostenere i quadricipiti e i flessori e creano un importante supporto alle fasce e alla muscolatura degli adduttori
- La vibrazione muscolare risulta sensibilmente ridotta

- Bermudas with different tension zones and resin exoskeleton
- The resin exoskeleton improve the function of the main muscles of the thigh and to create an important support to the muscle fibres of the adductors
- Muscular vibration is noticeably reduced

- Bermuda avec des zones à tension différenciée et un exosquelette en résine.
- L'exosquelette en résine se concentre sur les principaux muscles de la cuisse pour en améliorer la fonctionnalité.
- Les bandes élastiques internes, réalisées pour soutenir les quadriceps et les fléchisseurs, créent un important soutien aux bandes et à la musculature des adducteurs.
- Les vibrations musculaires sont sensiblement réduites



00120  
black

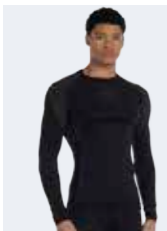


00010  
white







00120  
black



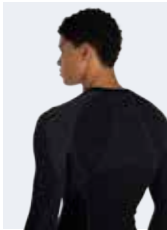
## 2026 PERSIA

Adult  
**UMOKOL**  
XS/S - M/L - XL/XXL



    
40% WOOL 40% POLYPROPYLENE 15% POLYAMIDE  
5% ELASTANE

- Intimo tecnico invernale
- Collo a Giro
- Traspirante
- Resistente ad abrasioni
- Ottimizza calore, traspirazione, durata
- Vestibilità aderente
- In seamless con un mix di filati ad alto contenuto di lana merinos

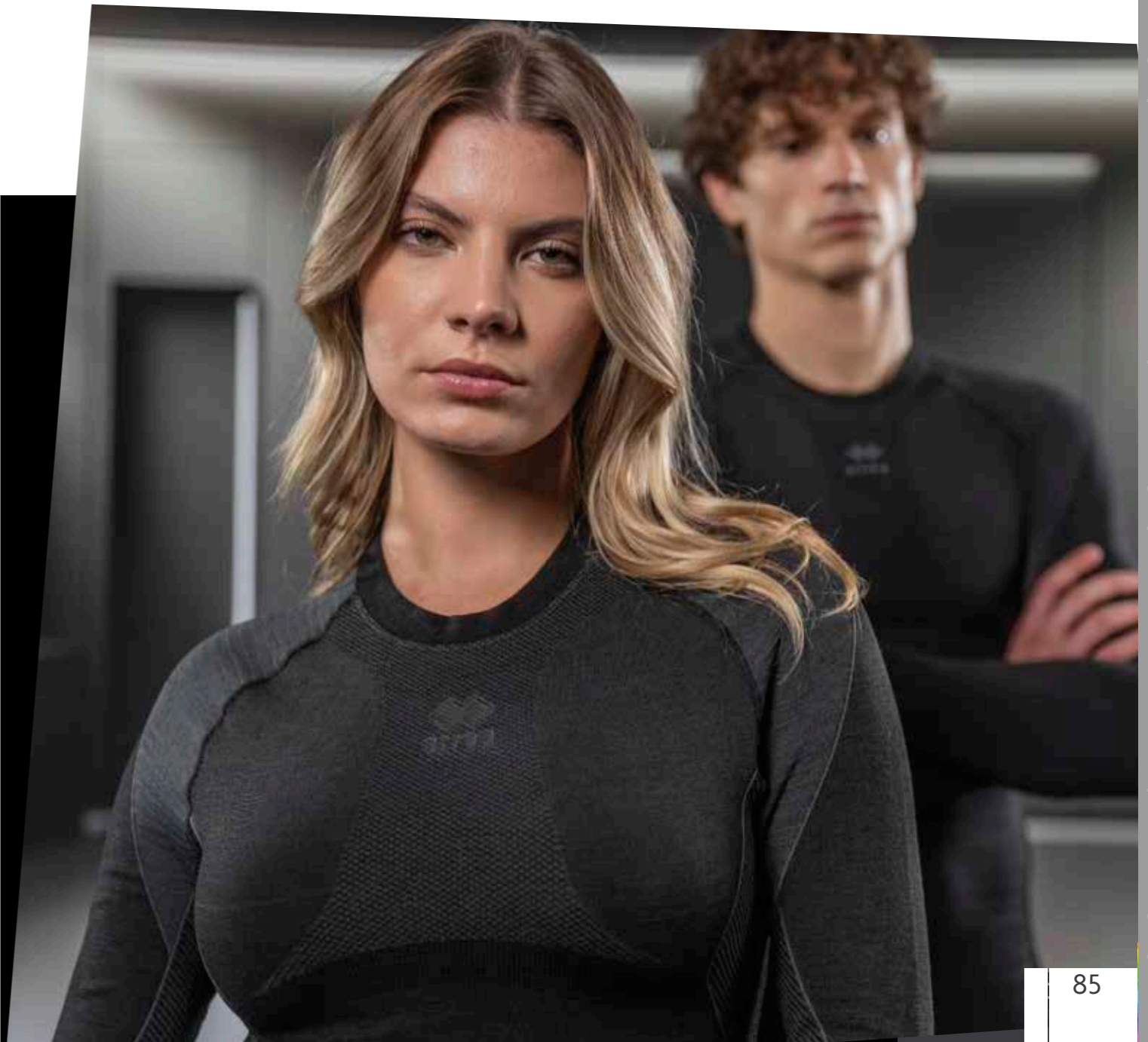


- Winter Technical Underwear
- Round Neck
- Breathable
- Abrasion-Resistant
- Optimizes warmth, breathability, durability
- Tight-fitting
- Seamless with a blend of high-content merino-wool yarns



STANDARD  
100  
074744.0  
CENTROCOT

- Sous-vêtements techniques d'hiver
- Col rond
- Respirant
- Résistant à l'abrasion
- Optimise chaleur, respirabilité, durabilité
- Coupe ajustée
- Sans couture avec un mélange de fils à haute teneur en laine mérinos





## 2026 KELVIN

Adult  
**UMOLOL**  
S/M-L/XL-XXL

Junior  
**UMOL1L**  
XXS-XS



85% POLYAMIDE 10% POLYESTER 5% ELASTANE

- Manica a giro, collo a lupetto
- Inserti tridimensionali localizzati nella parte superiore
- Effetto "second skin", tecnologia Seamless
- Isolamento termico
- Taschino posteriore porta GPS

- Set-in sleeves, turtleneck
- Three-dimensional inserts on upper portion
- "Second skin" effect, seamless technology
- Thermal insulation
- Back pocket for GPS

- Manches montées, col montant
- Pièces tridimensionnelles situées dans la partie supérieure
- Effet « deuxième peau », technologie sans coutures
- Isolation thermique
- Petite poche arrière porte-GPS



STANDARD 100  
074744.0  
CENTROCOT



## 2026 KOLE

Adult  
**UP0H0Z**  
S/M-L/XL-XXL

Junior  
**UP0H1Z**  
YXS-XXS-XS



85% POLYAMIDE 10% POLYESTER 5% ELASTANE

- Alta traspirabilità, Isolamento termico
- Rapido assorbimento del sudore
- Effetto "second skin", tecnologia seamless
- Estrema leggerezza

- High breathability, thermal insulation
- fast sweat absorption
- "Second skin" effect, seamless technology
- Extreme lightness

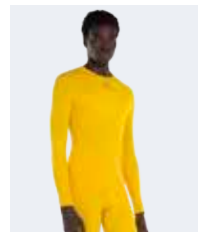
- Grande respirabilità, Isolation thermique
- Absorption rapide de la transpiration
- Effet « deuxième peau », technologie sans coutures
- Extrême légèreté



STANDARD 100  
074744.0  
CENTROCOT



## 2026 KEN

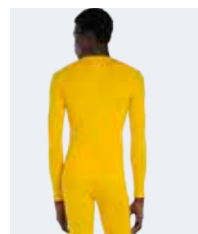


Adult  
**UMOM0L**  
S/M-L/XL-XXL

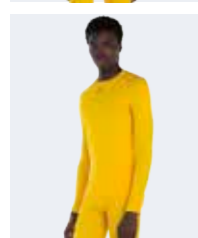
Junior  
**UMOM1L**  
XXS-XS



85% POLYAMIDE 10% POLYESTER 5% ELASTANE



- Manica e collo a giro
- Inserti tridimensionali localizzati nella parte superiore
- Effetto "second skin", tecnologia Seamless
- Isolamento termico
- Taschino posteriore porta GPS



- Set-in sleeves and crew neck
- Three-dimensional inserts on upper part
- "Second skin" effect, seamless technology
- Thermal insulation
- Back pocket for GPS

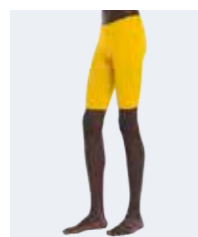
- Manches montées et col rond
- Pièces tridimensionnelles situées dans la partie supérieure
- Effet « deuxième peau », technologie sans coutures
- Isolation thermique
- Petite poche arrière porte-GPS



STANDARD 100  
074744.0  
CENTROCCOT



## 2026 KYRAN

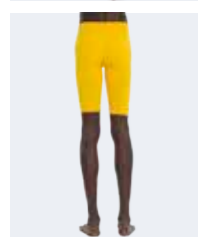


Adult  
**UP010Z**  
S/M-L/XL-XXL

Junior  
**UP011Z**  
XS



85% POLYAMIDE 10% POLYESTER 5% ELASTANE



- Alta traspirabilità, rapido assorbimento del sudore
- Effetto "second skin", tecnologia seamless
- Isolamento termico
- Estrema leggerezza

- High breathability, rapid sweat absorption
- "Second skin" effect, seamless technology
- Thermal insulation
- Extreme lightness

- Grande respirabilité, absorption rapide de la transpiration
- Effet « deuxième peau », technologie sans coutures
- Isolation thermique
- Extrême légèreté



STANDARD 100  
074744.0  
CENTROCCOT







00010  
white



00090  
navy



00120  
black



# 2026 KIMK

Adult **UM000S**  
S/M-L/XL-XXL

Junior **UM001S**  
XS



85% POLYAMIDE 15% POLYESTER

- Collo a giro
- Alta traspirabilità, estrema Leggerezza
- Effetto "second skin", tecnologia Seamless
- Ideale regolazione termica corporea
- Taschino posteriore porta GPS

- Crew neck
- High breathability, extreme lightness
- "Second skin" effect, seamless technology
- Ideal body temperature regulation
- Back pocket for GPS

- Col rond
- Grande respirabilità, extrême légèreté
- Effet « deuxième peau », technologie sans coutures
- Régulation thermique corporelle idéale
- Petite poche arrière porte-GPS







## 2029 EVO SINGLET

Adult  
**GMOYOS**  
S>5XL

Junior  
**GMOY1S**  
YXS-XXS-XS



100% COTTON - 140 g/mq

- Maglia smanicata
- Collo a giro
- Fondo maglia con orlo

- Sleeveless shirt
- Crew neck
- Hemmed shirt bottom

- Maillot sans manches
- Col rond
- Bas du maillot avec ourlet



00010  
white



00090  
navy



00120  
black



00010  
white



00090  
navy



00120  
black



00070  
blue



00020  
red



03320  
green fluo

## 2029 GALE

Adult  
**HMOVOS**  
S>4XL

Junior  
**HMOV1S**  
XS



UTILITY 100% polyester - 145 g/mq

- Maglia smanicata
- Collo a giro
- Fondo maglia con orlo

- Sleeveless shirt
- Crew neck
- Hemmed shirt bottom

- Maillot sans manches
- Col rond
- Bas du maillot avec ourlet





## 2029 ALLENAMENTO

Adult  
**A3010**  
M»XL

Junior  
**A3011**  
XS



46% POLYESTER - 46% COTTON - 8% ELASTANE

- Manica a giro
- Collo a giro
- Isolamento termico
- Mantiene il corpo asciutto e caldo

- Set-in sleeves
- Crew neck
- Thermal insulation
- It keep the body warm and dry

- Manches montées
- Col rond
- Isolation thermique
- Il garde le corps sec et chaud



000001  
white



# ACCESSORIES

## 2029 BIB



Adult **A980** Junior **A981** Kid **A982**



100% POLYESTER - 120 g/mq

- Collo a giro profondo e sbracci ampi
- Wide crew neck and armholes
- Col rond profond et emmanchures amples

**10**  
PCS X PACK



000333  
fuchsia fluo

000002  
red

000334  
orange fluo

000331  
yellow fluo

000332  
green fluo

000008  
royal



## 2029 BIB DOUBLE



Adult **C990** Junior **C991**  
M-XL XS



100% POLYESTER - 120 g/mq

- Collo a giro profondo e sbracci ampi
- Double
- Wide crew neck and armholes
- Doubleface
- Col rond profond et emmanchures amples
- Double face

**5**  
PCS X PACK



000026  
white/blue

000028  
white/navy

000050  
red/white

001810  
orange fluo/yellow fluo



# 2029 POLYESTERE

Adult **A410** Junior **A411** Kid **A412**



70% POLYESTER 15% COTTON 10% NYLON 5% ELASTANE

- Altezza ginocchio
- Kneesocks
- Chaussettes hauteur genou



# 2029 TRANSPIR

Adult **A405** Junior **A406**



80% NYLON 15% COTTON 5% ELASTANE

- Altezza ginocchio
- Estremamente traspirante
- Microfori sul polpaccio
- Kneesocks
- Highly breathable
- Micro-holes on calf
- Chaussettes hauteur genou
- Extrêmement respirantes
- Microtrous sur le mollet



# 2026 SOCKS PRO

Adult **GC0B0Z** Junior **GC0B1Z**



90% POLYESTER 10% ELASTANE

- Altezza ginocchio
- Estremamente traspirante
- Microfori sul polpaccio
- Knee length
- Highly breathable
- Microholes on the calf
- Hauteur genou
- Extrêmement respirantes
- Microtrous sur le mollet



# 2026 ENERGY GRIPP

Adult **GC0A0Z**  
M-L-XL



84% POLYAMIDE 14% COTTON 2% ELASTANE

- Calze antiscivolo
- Pad in gomma sul fondo
- Traspiranti
- Anti-slip socks
- Rubber pad on the sole
- Breathable

- Chaussettes antidérapantes
- Tampon en caoutchouc dans le bas
- Respirantes



Fino ad esaurimento scorte  
While stocks last  
Jusqu'à épuisement du stock  
Solange der Vorrat reicht

SIZE ENERGY GRIP:		
M:39/41	L: 42/44	XL: 45/47

# 2029 ZONE

Adult **A400Z** Junior **A401Z** Kid **A402Z**

75% POLYESTER 15% COTTON 7% NYLON 3% ELASTANE

- Altezza ginocchio
- Kneesocks
- Chaussettes hauteur genou



## 2029 ACTIVE

Adult **A432**  
M-L-XL  
Junior **A433**  
XS



80% COTTON 16% NYLON 4% ELASTANE

- Altezza ginocchio
- Zona traspirante sul collo del piede

- Kneesocks
- Breathable zone on instep

- Hauteur genou
- Zone respirante sur le cou-de-pied



000028  
white/navy

000190  
navy/white

000250  
black/white

SOCKS SIZE
XS: 31/34
M: 35/38
L: 39/42
XL: 43/47



## 2029 SKIP

Adult **A422**  
M-L-XL  
Junior **A423**  
XS



80% COTTON 16% NYLON 4% ELASTANE

- Calza corta in cotone
- Zona traspirante sul collo del piede

- Cotton ankle socks
- Breathable zone on instep

- Chaussettes bas en coton
- Zone respirante sur le cou-de-pied



000028  
white/navy

000190  
navy/white

000250  
black/white

SOCKS SIZE
XS: 31/34
M: 35/38
L: 39/42
XL: 43/47



## 2026 JUMP

Adult **FA2R0Z**  
M-L-XL



50% COTTON 50% ELASTANE

- Calza corta in cotone
- Zona traspirante sul collo del piede

- Cotton ankle socks
- Breathable zone on instep

- Chaussettes bas en coton
- Zone respirante sur le cou-de-pied



00280  
white/navy



02500  
black/white

SOCKS SIZE
M: 35/38
L: 39/42
XL: 43/47



## 2029 ALPHA

Adult **FC0A0Z**  
M-L-XL  
Junior **FC0A1Z**  
XS



80% COTTON 20% ELASTANE

- Compressione sull'arco plantare
- Tallone e punta rinforzati

- Compression on arch of the foot
- Reinforced heel and toe

- Compression sur voûte plantaire
- Talon et pointe renforcés



00280  
white/navy

SOCKS SIZE
XS: 31/34
M: 35/38
L: 39/42
XL: 43/47



## 2029 BEST

Adult **FC0B0Z**  
Junior **FC0B1Z**



45% COTTON 45% POLYESTER 10% ELASTANE

- Altezza sopra alla caviglia
- Particolarmente indicata per uso in allenamento

- Height above the ankle
- Particularly recommended for training

- Chaussettes bas en coton montant au-dessus de la cheville
- Spécialement indiquées pour l'entraînement



00010  
white

00090  
navy

00120  
black



## 2029 COMFORT

Adult **A426**  
ONE SIZE



80% COTTON 16% NYLON 4% ELASTANE

- Altezza caviglia
- Zona traspirante sul collo del piede

- Ankle socks
- Breathable zone on instep

- Hauteur cheville
- Zone respirante sur le coup-de-pied



000028  
white/navy



000250  
black/white



## 2029 TRAINING

Adult **A428**  
M-L-XL  
Junior **A429**  
XS



55% COTTON 40% NYLON 5% ELASTANE

- Altezza polpaccio
- Zona traspirante sul polpaccio

- Calf-length socks
- Breathable zone on calf

- Chaussettes hauteur mollet
- Zone respirante sur le mollet



000031  
white/black



000190  
navy/white

SOCKS SIZE
XS: 31/34
M: 35/38
L: 39/42
XL: 43/47



## 2025 PRO35

### GA100Z

SIZE 5



Competition

- Costruzione a 14 pannelli termosaldati
- Rinforzo in tessuto multistrato
- Rivestimento in HEXA 1.2 texturizzata
- Consigliato per adulti
- Certificato FIFA QUALITY PRO

- Construction with 14 thermally bonded panels
- Multi-layered fabric reinforcement
- Coated in textured HEXA 1.2
- Recommended for adult players
- FIFA QUALITY PRO certified

- Construction avec 14 panneaux thermosoudés
- Renfort en tissu multicouche
- Revêtement en HEXA 1.2 texturisée
- Conseillé pour adultes
- Certifié FIFA QUALITY PRO



16130  
white/black/gold



## 2027 NEW GARA ELITE

### HA0A0Z

SIZE 5



Competition

- Costruzione a 14 pannelli termosaldati
- Scanalature aerodinamiche in alta frequenza
- Rivestimento Hi-Tech PU texturizzato
- Camera d'aria rinforzata con patch in poliestere
- Certificato FIFA QUALITY PRO
- Consigliato per la gara

- 14-panel thermally bonded construction
- High-frequency aerodynamic grooves
- Textured Hi-Tech PU coating
- Reinforced air chamber with polyester patch
- FIFA QUALITY PRO certified
- Recommended for match play

- Construction à 14 panneaux thermosoudés
- Rainures aérodynamiques haute fréquence
- Revêtement PU texturé haute technologie
- Chambre à air renforcée avec patch en polyester
- Certifié FIFA QUALITY PRO
- Recommandé pour les compétitions



96960  
white/safety yellow/cyan



96970  
safety yellow/navy/cyan

## 2027 STREAM HYBRID HERITAGE

### HA0D0Z

SIZE 4-5



Competition/Training

- Costruzione con 14 pannelli cuciti a macchina e termosaldati
- Rivestimento con superficie texturizzata Diamond PU
- Camera d'aria in butile di Taiwan rinforzata e avvolta con filamenti di poliestere
- Certificazione FIFA QUALITY

- Hybrid construction with 14 machine-stitched and thermally bonded panels
- Coated in a textured Diamond PU surface
- Reinforced Taiwanese butyl bladder wrapped in polyester filaments
- FIFA QUALITY certified

- Construction Hybrid avec 14 panneaux cousus à la machine et thermosoudés
- Revêtement à la surface texturisée Diamond PU
- Vessie en caoutchouc butyle de Taiwan renforcée et enveloppée de fils de polyester
- FIFA QUALITY certifié



14530  
white/blue/cyano



18110  
white/black/grey



30960  
yellow/navy/cyano



00410  
white/navy/red



## 2027 MERCURIO HERITAGE

### HA0G0Z

SIZE 3-4-5



Training

- Costruzione a 28 pannelli
- Rivestimento in TPU texturizzato
- Cucito a mano
- Rinforzo in tessuto multistrato
- Camera d'aria in butile
- Consigliato per adulti e giovanili

- Constructed in 28 panels
- Textured TPU covering
- Hand-stitched
- Multi-layered fabric reinforcement
- Butyl bladder
- Suggested for adult and young players

- Fabriqué avec 28 pièces
- Revêtement en TPU texturisé
- Cousu à la main
- Renfort en tissu multicouche
- Vessie en buty
- Conseillé pour adultes et jeunes joueurs



00410  
white/navy/red



33790  
white/navy/cyan



37090  
white/black/green fluo



96980  
yellow/navy/fuxia

# 2027 SUPER EVO HERITAGE

**HA0C0Z**  
SIZE 3-4-5

## Training

- Costruzione tradizionale a 32 pannelli
- Rivestimento in TPU
- Cucito a mano
- Rinforzo in tessuto multistrato
- Camera d'aria in butile
- Consigliato per l'allenamento di adulti e settori giovanili
- Consigliato per terreni sintetici

- Constructed in 32 panels
- TPU coating
- Hand-stitched
- Reinforcement in multilayered fabric
- Butyl bladder
- Recommended for adult and youth training
- Recommended for synthetic surfaces

- Fabriqué avec 32 pièces
- Revêtement en TPU
- Cousu à la main
- Renforcement en tissu multicouche
- Vessie en butyl
- Recommandé pour l'entraînement des adultes et des jeunes
- Recommandé pour les terrains synthétiques



# 2025 COLLEGE ID

**GA1H0Z**  
SIZE 3-4-5



## Training

- Costruzione a 14 pannelli cuciti a macchina
- Composizione multistrato
- Camera d'aria in butile
- Consigliato per giovanili

- Construction with 14 machine-sewn panels
- Multi-layer composition
- Butyl bladder
- Recommended for young players

- Construction à 14 panneaux cousus à la machine
- Composition multicouche
- Chambre à air en butyl
- Conseillé pour jeunes joueurs



LIMITED EDITION

# 2025 COLLEGE ID SUPERLIGHT 290GR

**GA1M0Z**  
SIZE 3-4-5

## Training

- Costruzione a 14 pannelli cuciti a macchina
- Composizione multistrato
- Camera d'aria in butile
- Consigliato per giovanili
- \_290gr

- Construction with 14 machine-sewn panels
- Multi-layer composition
- Butyl bladder
- Recommended for young players
- \_290gr

- Construction à 14 panneaux cousus à la machine
- Composition multicouche
- Chambre à air en butyl
- Conseillé pour jeunes joueurs
- \_290gr



# 2025 COLLEGE ID SUPERLIGHT 350GR

**GA1N0Z**  
SIZE 3-4-5

## Training

- Costruzione a 14 pannelli cuciti a macchina
- Composizione multistrato
- Camera d'aria in butile
- Consigliato per giovanili
- \_350gr

- Construction with 14 machine-sewn panels
- Multi-layer composition
- Butyl bladder
- Recommended for young players
- \_350gr

- Construction à 14 panneaux cousus à la machine
- Composition multicouche
- Chambre à air en butyl
- Conseillé pour jeunes joueurs
- \_350gr







# 2027 MINI BALL SOCCER

HA0U0Z  
ONE SIZE



- Costruzione con 28 pannelli
- Rivestimento in TPU
- Cucitura a macchina
- Camera d'aria in gomma
- Diametro 15 cm

- 28-panel construction
- TPU coating
- Machine-stitched
- Rubber bladder
- Diameter 15 cm

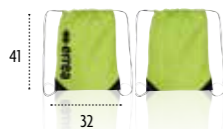
- Construction à 28 panneaux
- Revêtement TPU
- Cousu à la machine
- Vessie caoutchouc
- Diamètre 15cm



96980  
yellow/navy/fuxia

# 2029 LUIS

EA1F0Z



100% POLYESTER



00120  
black



00090  
navy

04930  
orange fluo/black



59120  
green fluo/black

04920  
yellow fluo/black

# 2026 BARRIE

600D POLYESTER

GA0G0Z  
20 LT



32540  
anthracite/black

# 2029 BENGALA

GA0F0Z  
24 LT



00070  
blue



00020  
red

00090  
navy

00120  
black

04920  
yellow fluo/black

59120  
green fluo/black

# 2029 PRO

T0303  
80 LT

600D POLYESTER



000158  
blue/navy



000058  
red/navy



000009  
navy



000012  
black

Fino ad esaurimento scorte/While stocks last/Jusqu'à épuisement du stock/Solange der Vorrat reicht

# 2029 BASIC

T0313  
78 LT

600D POLYESTER

25720  
H CM 15



53

52

15

32



000007  
blue

# 2029 BASIC MEDIA

T0313M  
49 LT

600D POLYESTER

25705  
H CM 10



48

48

10

26



000009  
navy

000012  
black

000015  
maroon



000002  
red



000004  
green

# 2025 BASIC KID

Fino ad esaurimento scorte  
While stocks last  
Jusqu'à épuisement du stock

DA0U0Z  
26 LT

600D POLYESTER

25735  
H CM 12



40

34

12

23

ONLY  
• BASIC  
• BASIC MEDIA

Fino ad esaurimento scorte  
While stocks last  
Jusqu'à épuisement du stock  
Solange der Vorrat reicht



07720  
black/yellow fluo

08180  
black/green fluo

07830  
black/orange fluo

# 2025 BOOKER

GA010Z  
33 LT



600D POLYESTER



32540  
anthracite/black



01500  
blue/white

01900  
navy/white



02500  
black/white



25735  
H CM 12

# 2029 LYNOS

EA1A0Z  
33 LT



600D POLYESTER



01920  
navy/yellow



01580  
blue/navy

02000  
navy/grey



01910  
navy/red

02600  
black/grey



25735  
H CM 12

# 2029 THOR

EA3D0Z  
25 LT



600D POLYESTER



00090  
navy



00120  
black



08180  
black/green fluo



07830  
black/orange fluo



07720  
black/yellow fluo

# 2028 ROY

HA000Z  
23 LT



600D POLYESTER



00070  
blue



00020  
red



00090  
navy



00120  
black

# 2025 BOOKER KID

GA0J0Z  
23 LT



600D POLYESTER



32540  
anthracite/black



01500  
blue/white



02500  
black/white



01900  
navy/white

# 2029 LYNOS KID

EA1B0Z  
23 LT



600D POLYESTER



01920  
navy/yellow



01580  
blue/navy

02000  
navy/grey



01910  
navy/red

02600  
black/grey

# 2029 MERCURY

T0347  
38 LT



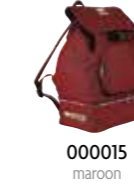
600D POLYESTER



00007  
blue



000009  
navy



000015  
maroon



000012  
black



000004  
green



000002  
red



25735  
H CM 12

# 2029 TOBAGO

T0389  
15 LT



600D POLYESTER



000002  
red



000009  
navy



000015  
maroon



000012  
black



000004  
green



000007  
blue

## 2029 LEN

EA1E0Z  
7 LT

600D POLYESTER



02600  
black/grey



02000  
navy/grey

## 2029 CLIO

EA1G0Z

600D POLYESTER



00120  
black



## 2029 PORTAMUTE<sup>08</sup>

T0328  
64 LT

600D POLYESTER



000009  
navy



## 2029 APOLLO

EA1M0Z  
13 LT

600D POLYESTER



00120  
black



## 2029 MEDICAL

T0380  
28 LT

600D POLYESTER



000260  
black/grey



## 2029 CALCETTO<sup>08</sup>

T0329  
60 LT

600D POLYESTER



000009  
navy



## 2029 LAYTON FIT

EA0Z0Z  
48 LT

600D POLYESTER



02000  
navy/grey



02600  
black/grey

## 2029 SACCA PORTAPALLONI<sup>12</sup>

T0392  
130 LT

600D POLYESTER



000012  
black



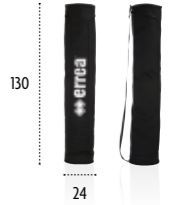
## 2029 PORTAPALLONI<sup>06</sup>

T0322  
50 LT

600D POLYESTER



000012  
black



6/7  
PALLONI/BALLS/BALLONS

## 2025 TWIN TUBE

FA2P0Z  
51,8 LT

600D POLYESTER



00120  
black



4  
PALLONI/BALLS/BALLONS



8  
PALLONI/BALLS/BALLONS

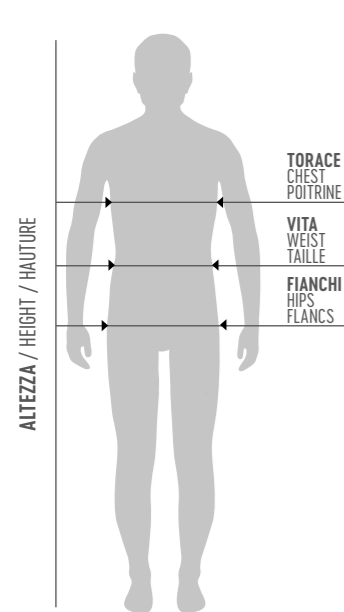
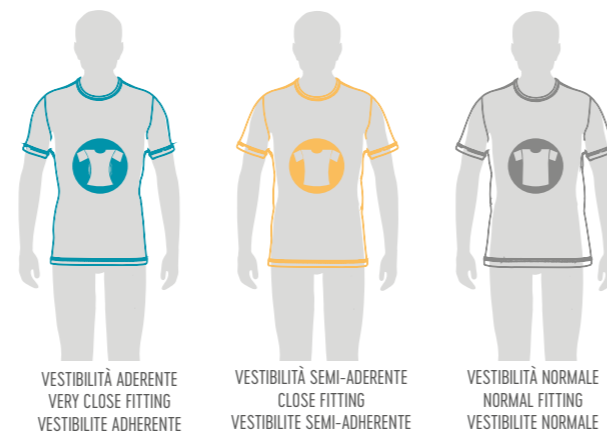


# SIZE CHART

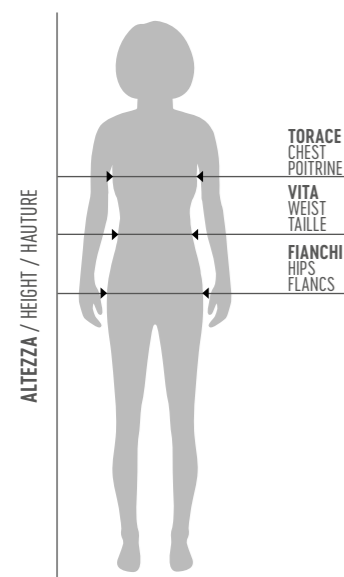
Se sei al limite tra due taglie, ordina quella immediatamente più piccola per una vestibilità più aderente o quella immediatamente più grande per una vestibilità più comoda.

If you are in between sizes, order the smaller size for a snugger fit or the larger one if you prefer a more comfortable fit.

Si vous êtes juste entre deux tailles, commandez la plus petite pour une coupe plus ajustée ou la plus grande pour une coupe plus confortable.



TAGLIE UOMO / SIZES MAN / TAILLES HOMME										
	EU	IT	TORACE CHEST POITRINE		VITA WAIST TAILLE		FIANCHI HIPS FLANCS		ALTEZZA HEIGHT HAUTEUR	
			cm	inches	cm	inches	cm	inches	cm	inches
KID	3YXS	22-24							98-108	39-42.5
	2YXS	26-28							110-120	42.5-47.2
JUNIOR	YXS	30-32	64-72	25-28	54-60	21.26-24	66-74	26-29	122-132	48-52
	XXS	34-36	72-80	28-31	60-66	24-26	74-82	29-32	134-144	52.8-56.7
	XS	38-40	80-88	31-35	66-72	26-28	82-90	32-35	146-156	57.5-61.4
ADULT	S	42-44	90-94	35-37	72-76	28-30	92-96	36-38	167-172	65.7-67.7
	M	46-48	94-98	37-39	76-80	30-31	96-100	38-39.4	173-178	68.1-70.1
	L	50-52	98-102	39-40.2	80-84	31-33	100-104	39.4-40.9	179-184	70.5-72.4
	XL	54	102-106	40.2-41.7	84-88	33-35	104-108	40.9-42.5	185-190	72.8-74.8
	XXL	56	106-110	41.7-43.3	88-92	35-36	108-112	42.5-44.1	191-196	75.2-77.2
	3XL	58	110-114	43.3-44.9	92-94	36-37	112-116	44.1-45.7	197-202	77.6-79.5
	4XL	60	114-118	44.9-46.5	94-96	37-38	116-120	45.7-47.2	203-208	79.9-81.9



TAGLIE DONNA / SIZES WOMAN / TAILLES FEMME										
	EU	IT	TORACE CHEST POITRINE		VITA WAIST TAILLE		FIANCHI HIPS FLANCS		ALTEZZA HEIGHT HAUTEUR	
			cm	inches	cm	inches	cm	inches	cm	inches
KID	3YXS	24-26							98-108	39-42.5
	2YXS	26-28							110-120	42.5-47.2
JUNIOR	YXS	30-32	64-72	25-28	54-60	21.26-24	66-74	26-29	122-132	48-52
	XXS	34-36	72-80	28-31	60-66	24-26	74-82	29-32	134-144	52.8-56.7
	XS	38-40	80-88	31-35	66-72	26-28	82-92	32-36	146-156	57.5-61.4
ADULT	S	42-44	84-88	33-35	68-72	27-28	92-96	36-38	164-168	64.6-66.1
	M	46-48	88-92	35-36	72-76	28-30	96-100	38-39.4	169-173	66.5-68.1
	L	50-52	92-96	36-38	76-80	30-31	100-104	39.4-40.9	174-178	68.5-70.1
	XL	54	96-100	38-39.4	80-84	31-33	104-108	40.9-42.5	179-183	70.5-72
	XXL	56	100-104	39.4-40.9	84-88	33-35	108-112	42.5-44.1	184-188	72.4-74
	3XL	58	104-108	40.9-42.5	88-92	35-36	112-116	44.1-45.7	189-193	74.4-76
4XL	60	108-112	42.5-44.2	92-96	36-38	116-120	45.7-47.2	194-198	76.4-78	

# GUANTI / GLOVES / GANTS

Per prendere la misura giusta della larghezza della mano, segui esattamente il disegno illustrativo.

Follow the drawing to measure the hand's width in the proper way and use the chart to figure out which size best fits your hand.

Pour mesurer la largeur de la main suivre le dessin et le tableau.



GLOVES SIZING CHART							
7,5	8	8,5	9	9,5	10	10,5	11
8,2 cm	8,5 cm	8,8 cm	9,1 cm	9,4 cm	9,7 cm	10 cm	10,3 cm

# GINOCCHIERE / KNEEPADS / GENOUILLÈRES

### SIZE GUIDE

Misura la circonferenza della tua gamba 15 cm sotto la tua rotula.

Measure the circumference of your leg at a point 15 cm below the middle of your kneecap.

Mesure ton tour de jambe 15 cm au-dessous de la rotule.



KNEEPAD SIZING CHART					
	XS	S	M	L	XL
cm	30-33	33-35	35-37	37-40	40-45
inches	12-13	13-13,7	13,7-14,5	14,5-15,7	15,7-17,7

# CALZE / SOCKS / CHAUSSETTES



SOCKS SIZING CHART							
SIZE	KID	JR	AD	XS	M	L	XL
EU	35/38	39/42	42/46	31/34	35/38	39/42	43/47
USA	3.5/6	7/9	9/12	1/3	3.5/6	7/9	10/13
UK	2.5/5	6/8	8/11	12.5/2	2.5/5	6/8	9/12

### SIZE ENERGY GRIP:

M: 39/41

L: 42/44

XL: 45/47

# SCARPE / SHOES / CHAUSSURES



SHOES SIZING CHART														
EU	35	36	37	38	39	40	41	42	43	44	45	46	47	48
USA	3.5	4	5	6	7	7.5	8	9	10	10.5	11	12	13	14
UK	2.5	3	4	5	6	6.5	7	8	9	9.5	10.5	11	12	13





**errea**

**ERREÀ SPORT S.p.A.**

Via G. Di Vittorio, 2/1  
43056 S. Polo di Torrile (Parma) - Italy

[errea.com](http://errea.com)  
[info@errea.it](mailto:info@errea.it)

CERTIFIED QUALITY  
MANAGEMENT SYSTEM



UNI EN ISO 9001:2015



**FOOTBALL**



UNITED BY  
PRODUTTORI DAL  
**1988**