



COLLECTION  
COLLECTION  
**2025**  
COLLECTION



**GOAL**  **KEEPER**



**Vestiamo lo sport  
da produttore,  
con una cultura  
Sartoriale.**

Seguiamo ogni cliente con la stessa cura e  
professionalità

**Dressing sport as a  
manufacturer with  
a tailoring culture.**

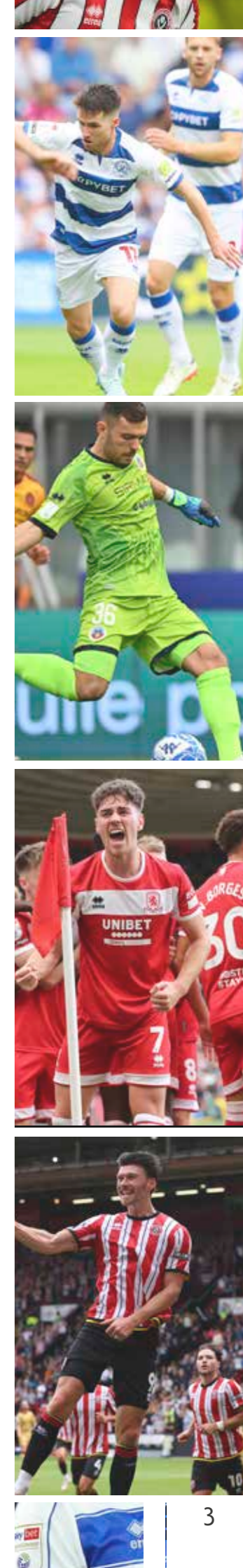
We dedicate the same care and professional  
approach to every customer

**Nous habillons le  
sport en tant que  
producteur possédant  
une grande culture  
de la couture.**

Nous suivons chaque client avec le même soin  
et le même professionnalisme



erreasport





# LA NOSTRA STORIA E I NOSTRI OBIETTIVI RACCHIUSI IN QUESTE PAGINE.

*Il nostro cuore è italiano ma la nostra mente ci fa viaggiare in tutto il mondo, in ogni sport e a qualsiasi livello*

Dal 1988 produciamo capi sportivi e tecnici in grado di migliorare le performances di chi vive e ama lo sport, assicurando i massimi standard di qualità, sicurezza e comfort. Il servizio e la cura del cliente sono la nostra priorità: la nostra principale e grande responsabilità è la soddisfazione e l'attenzione verso il consumatore.

Ci distinguiamo dai principali competitors perché siamo la prima azienda in Europa nel settore teamwear ad avere ottenuto la certificazione Oeko-Tex Standard 100, un ulteriore attestato che ci rende orgogliosi del lavoro svolto quotidianamente. Nella sede di San Polo di Torrile gestiamo l'intera filiera produttiva e lo sviluppo di tutte le fasi di lavorazione del prodotto, dalla selezione delle materie prime alla progettazione dell'aspetto grafico, dalla produzione dei prototipi fino alla consegna del capo finito. Scegliamo di essere produttori perché ci permette di garantire la massima sicurezza grazie a meticolosi controlli interni. L'efficace gestione aziendale si impegna ogni giorno a monitorare e migliorare l'organizzazione e il controllo, ottimizzare i processi, ridurre le inefficienze, contribuendo così alla qualità dei prodotti e servizi. Grazie al prezioso lavoro quotidiano, abbiamo ottenuto la certificazione ISO 9001:2015.

Oggi siamo presenti in 80 paesi, in costante ricerca di nuovi mercati e nuove sfide.

Since 1988, we've been producing sports and technical clothing able to boost the performance of those who love practising and experiencing sport, guaranteeing top standards of quality, safety and comfort. Customer service and care are our priority: our primary responsibility is to attend to and meet our customers' needs. What sets us apart from our main competitors is that we are the first company in the teamwear sector in Europe to have obtained Oeko-Tex Standard 100 certification, a further demonstration of why we can be proud of the work we do every day.

The entire production chain is managed at its headquarters in San Polo di Torrile, along with the development of all the manufacturing stages: from the selection of raw materials to the design of the graphics, from prototype production right up to the shipment of the finished garments. We have chosen to produce our own items because it allows us to guarantee maximum safety, thanks to the meticulous checks we carry out in-house.

Every day, our efficient corporate management strives to monitor and improve organisation and control, optimise processes and reduce inefficiencies, thus boosting the quality of our products and services. This sterling effort we make every day has earned us ISO 9001:2015 certification.

Today we are present in 80 countries and constantly on the lookout for new markets and challenges.

Depuis 1988, nous produisons des articles sportifs et techniques en mesure d'améliorer les performances de ceux qui vivent et aiment le sport, en assurant les plus hauts standards de qualité, de sécurité et de confort. Le service et le soin du client sont notre priorité: notre grande et principale responsabilité est la satisfaction et l'attention envers le consommateur.

Nous nous distinguons par rapport à nos principaux concurrents car nous sommes la première entreprise en Europe dans le secteur du teamwear à avoir obtenu la certification Oeko-Tex Standard 100, une attestation supplémentaire qui nous rend fiers du travail réalisé quotidiennement. La gestion de l'ensemble de la filière de production ainsi que le développement de toutes les étapes de réalisation du produit, sélection des matières premières, projet graphique, production des prototypes et livraison des vêtements finis ont lieu au siège de San Polo di Torrile. Nous choisissons d'être producteurs car cela nous permet de garantir la sécurité maximale grâce à des contrôles méticuleux que nous réalisons en interne.

Grâce à une gestion efficace, l'entreprise s'engage chaque jour à suivre et à améliorer l'organisation et le contrôle, à optimiser les processus, à réduire les inefficacités, contribuant ainsi à la qualité des produits et des services. Grâce au précieux travail quotidien, nous avons obtenu la certification ISO 9001:2015.

Nous sommes aujourd'hui présents dans 80 pays, à la recherche permanente de nouveaux marchés et de nouveaux défis.



# OUR HISTORY AND OUR OBJECTIVES ARE ILLUSTRATED IN THESE PAGES.

*Our heart is in Italy, but our mind allows us to travel the world, in every sport and at all levels.*

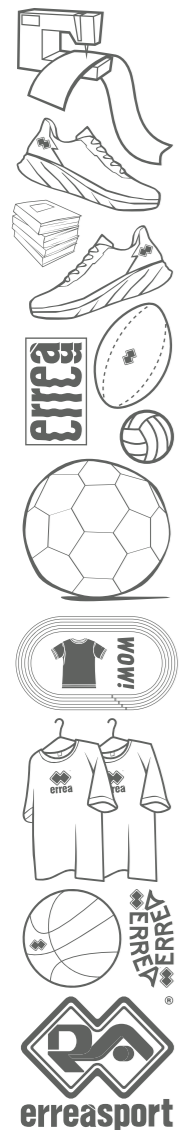


# NOTRE HISTOIRE ET NOS OBJECTIFS RENFERMÉS DANS CES PAGES.

*Notre cœur est italien mais notre esprit nous fait voyager dans le monde entier, dans tous les sports et à tous les niveaux*



DOWNLOAD



WE  
STAND  
FOR CLEAN  
SPORT.  
EVEN FOR  
YOUR  
SKIN.

Sport is the most beautiful thing in the world, and nothing must be allowed to pollute that beauty. That is why, besides developing increasingly high-performance materials that have a low impact on the environment, we at Erreà are the first teamwear company in Europe to have been awarded **STANDARD 100 by OEKO-TEX®** certification.

This certification sets extremely strict limits for substances harmful to health, which is why our fabrics are highly safe in all conditions.

**With Erreà, sport and health run side by side.**

POUR  
UN  
SPORT  
SAIN.  
JUSQU'À  
SUR  
LA PEAU.

Le sport est la plus belle chose au monde et rien ne doit l'entacher. C'est pourquoi, au-delà de la conception de matières toujours plus performantes et respectueuses de l'environnement, Erreà est le premier fabricant européen de vêtements de sport à avoir obtenu la certification **STANDARD 100 by OEKO-TEX®**.

Une attestation qui fixe des limites extrêmement strictes en matière de substances nocives pour la santé. Voilà pourquoi nos tissus garantissent un haut niveau de sécurité en toutes conditions d'utilisation.

**Avec Erreà, sport et santé vont toujours de pair.**



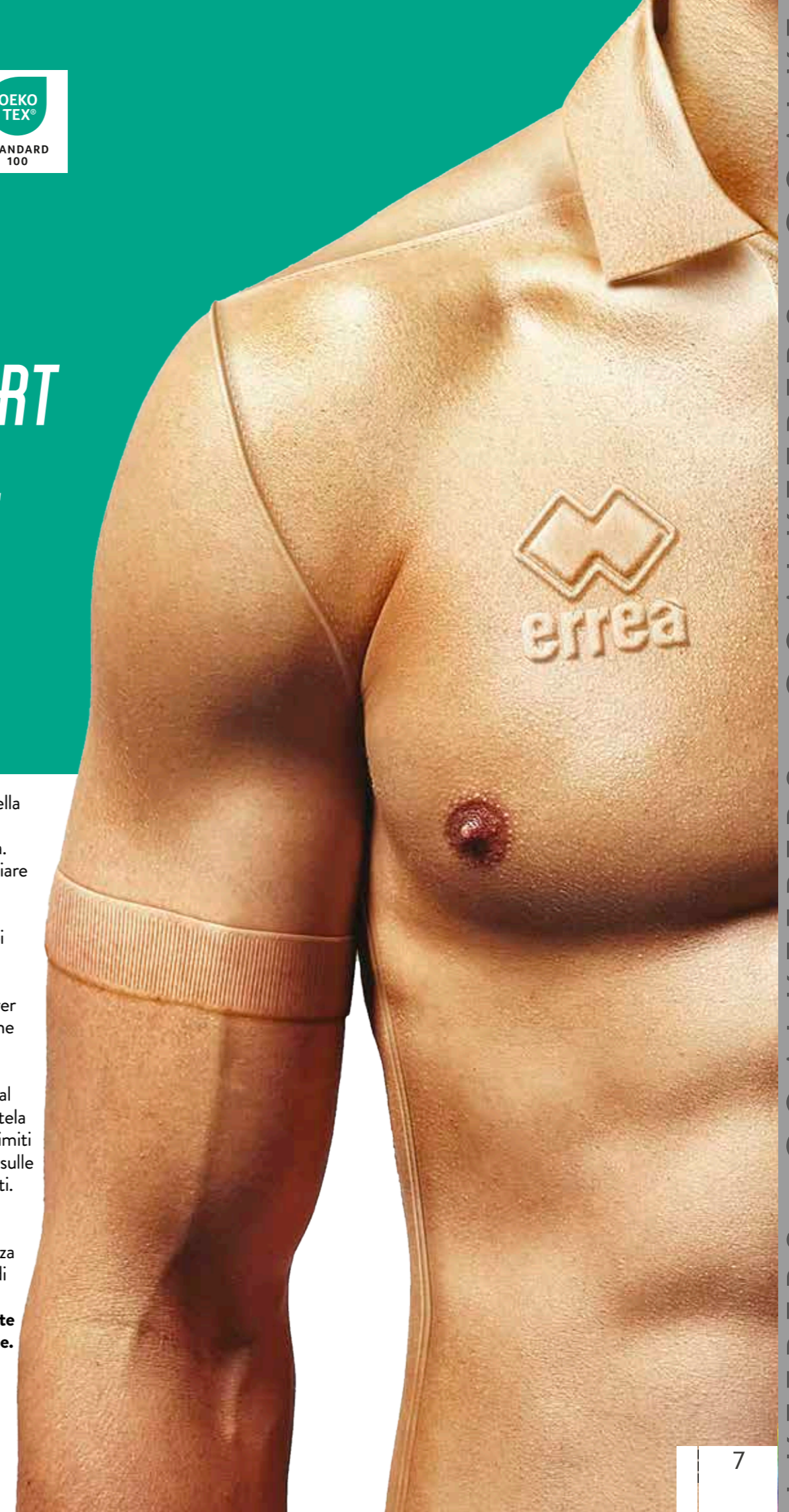
SIAMO  
PER  
LO SPORT  
PULITO.  
ANCHE  
SULLA  
PELLE.

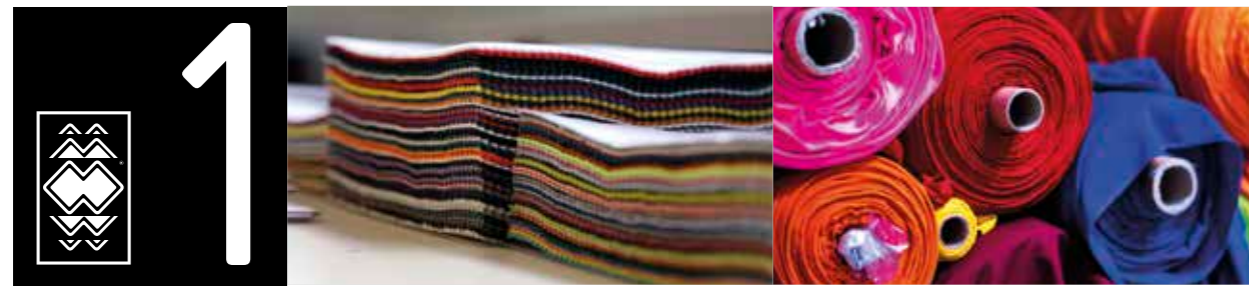
Lo sport è la cosa più bella del mondo e nulla deve inquinare la sua bellezza. Per questo, oltre a studiare materiali sempre più performanti e a basso impatto ambientale, noi di Erreà siamo la prima azienda in Europa nel settore teamwear ad aver ottenuto la certificazione **STANDARD 100 by OEKO-TEX®**.

Un attestato che pone al centro le esigenze di tutela della salute e che fissa limiti estremamente rigorosi sulle componenti dei prodotti. Ecco perché i nostri tessuti garantiscono un elevato livello di sicurezza in qualsiasi condizione di impiego.

**Con Erreà, sport e salute corrono sempre insieme.**

[erreà.com/oeko-tex](https://www.erreà.com/oeko-tex)





# 1

## MATERIE PRIME

### RAW MATERIALS MATIÈRES PREMIÈRES

Selezione  
Tracciabilità  
Qualità  
Fornitori di fiducia

*Disponibilità costante*  
Certificazione **OEKO**  
**TEX STANDARD 100**  
Test qualitativi

Selection  
Traceability  
Quality  
Trusted suppliers

*Constant availability*  
**OEKO TEX STANDARD 100**  
certification  
Quality testing

Sélection  
Traçabilité  
Qualité  
Fournisseurs de confiance

*Disponibilité constante*  
Certification **OEKO TEX**  
**STANDARD 100**  
Tests de qualité



# 2

## PROCESSO CREATIVO

### CREATIVE PROCESS PROCESSUS DE CRÉATION

Direzione creativa interna  
Ricerca stilistica  
Elaborazione contenuti distintivi

*Ricercatezza e approfondimento*  
*Unicità*  
*Ampia personalizzazione*

In-house creative direction  
Style research  
Development of distinctive features

*Sophistication and elaboration*  
*Uniqueness*  
*Ample customization*

Direction interne de la création  
Recherche stylistique  
Élaboration de contenus distinctifs

*Recherche et approfondissement*  
*Unicité*  
*Large personnalisation*



# 3

## SVILUPPO PRODOTTO

### PRODUCT DEVELOPMENT DÉVELOPPEMENT DU PRODUIT

Modellistica interna  
Prototipazione  
Sdifettamento

*Paternità del prodotto*  
*Industrializzazione ad hoc*  
*Realizzazione ottimale*

In-house pattern making  
Prototyping  
Elimination of defects

*Product authorship*  
*Ad hoc industrialisation*  
*Optimum manufacturing*

Patronnage interne  
Prototypage  
Élimination des défauts

*Paternité du produit*  
*Industrialisation ad hoc*  
*Réalisation optimale*



# 4

## SARTORIALITÀ INDUSTRIALE

### INDUSTRIAL TAILORING L'ART DE LA COUTURE INDUSTRIELLE

Innovazione  
tecnologica

*Filiera diretta*  
*Maestranze tessili*  
*Know how sartoriale*  
*Software di gestione di*  
*ultima generazione*

Technological  
innovation

*Direct supply chain*  
*Skilled textile workers*  
*Tailoring know-how*  
*State-of-the-art management*  
*software*

Innovation  
technologique

*Fourniers textiles*  
*Savoir-faire sur mesure*  
*Logiciel de gestion de dernière*  
*génération*



# 5

## LINEA PRODUTTIVA

### PRODUCTION LINE LIGNE DE PRODUCTION

Cura dei dettagli

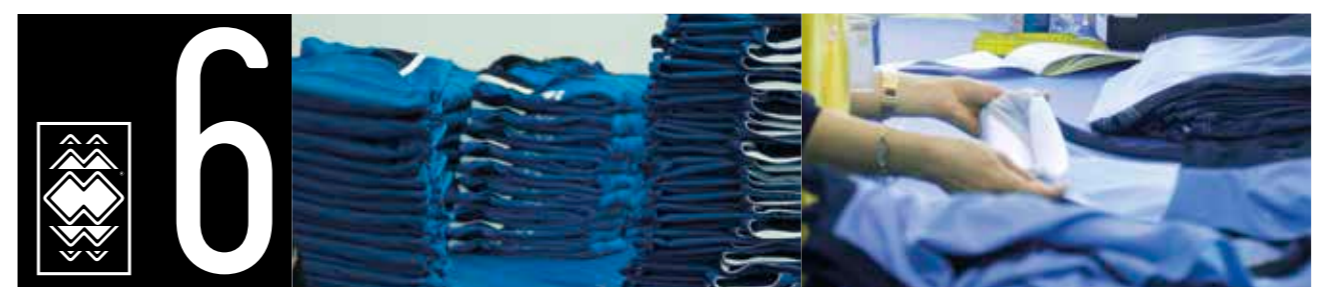
*Filiera diretta*  
*Controllo confezione con*  
*maestranze qualificate*  
*Controllo qualità su tutti i prodotti*  
*Macchinari di proprietà di ultima*  
*generazione*

Attention to detail

*Direct supply chain*  
*Manufacturing controls with expert*  
*workforce*  
*Quality control on all products*  
*State-of-the-art proprietary machinery*

Soin des détails

*Filière directe*  
*Contrôle de la confection par des*  
*ouvriers qualifiés*  
*Contrôle qualité sur tous les produits*  
*Machines de dernière génération en*  
*propriété*



# 6

## QUALITÀ DI SERVIZIO

### QUALITY SERVICE QUALITÉ DE SERVICE

Disponibilità continua  
Magazzino garantito  
Ufficio commerciale a disposizione

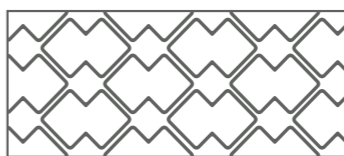
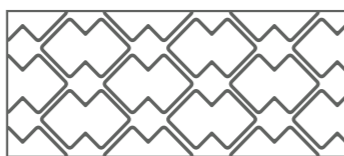
*Tempestività*  
*Capacità di risposta*  
*Rapporto umano*  
*Problem solving*

Continuous availability  
Guaranteed stock  
Sales office at your disposal

*Prompt response capacity*  
*Human relations*  
*Problem solving*

Disponibilità continue  
Magasin garanti  
Bureau commerciale disponible

*Rapidité/Capacité de réponse*  
*Rapport humain*  
*Résolution de problème*



CERTIFIED QUALITY  
MANAGEMENT SYSTEM



UNI EN ISO 9001:2015

GOALKEEPERS • GOALKEEPERS • GOALKEEPERS • GOALKEEPERS • GOALKEEPERS



















**FULL CUSTOM**



**CUSTOMISATION**  
*is our vocation*  
our know how for your custom experience

**errea**



**PERSONALIZZARE**  
*è la nostra vocazione*  
il nostro know per la tua esperienza di personalizzazione

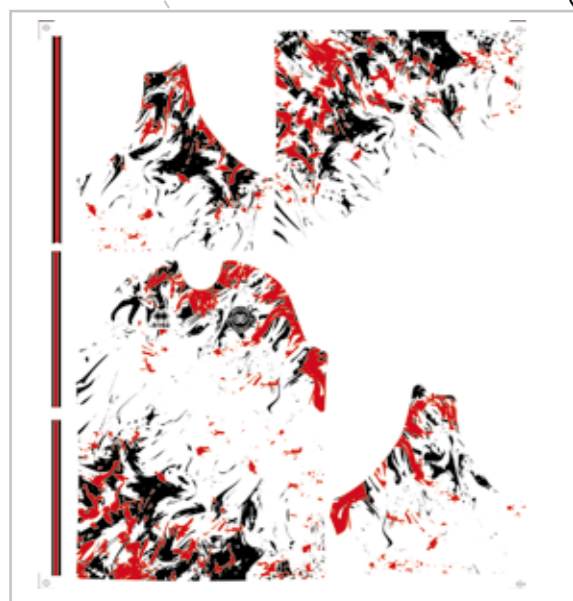
**PERSONNALISATION**  
*est notre vocation*  
notre savoir faire pour votre expérience sur mesure





RESERVED AREA FOR RESELLERS

# FULL CUSTOM - COMPETITION



## UN CAPO UNICO REALIZZATO PER LA TUA SOCIETÀ

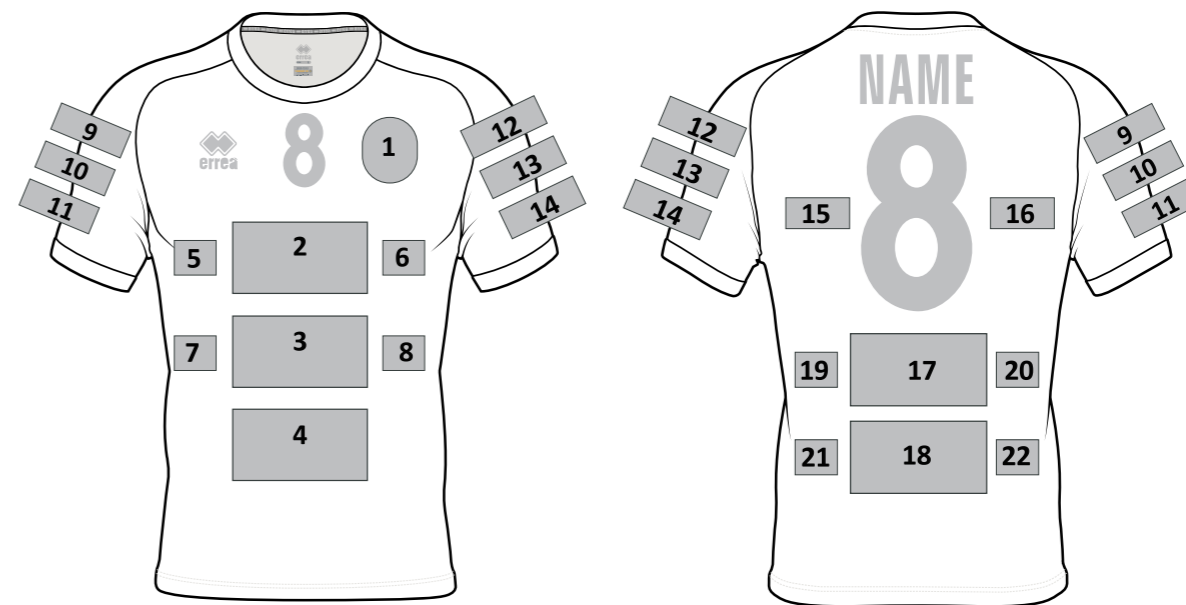
- 1 Identificazione del modello, tessuto e vestibilità con cui realizzare il capo personalizzato.
- 2 Realizzazione dei disegni da parte dell'ufficio Design Erreà.
- 3 Confezione del capo personalizzato completo di eventuali sponsor e nomi/numeri.

## AN ORIGINAL, ONE-OFF GARMENT PRODUCED FOR YOUR ORGANIZATION.

- 1 Identification of the model, fabric and fit with which to produce your customized garment.
- 2 Development of designs by the Erreà Design Office.
- 3 Manufacture of the customized garment complete with possible sponsors and names/numbers.

## UN ARTICLE UNIQUE RÉALISÉ POUR VOTRE SOCIÉTÉ.

- 1 Identification du modèle, du tissu et de la ligne à partir desquels l'article personnalisé sera réalisé.
- 2 Réalisation des dessins par le Bureau Design d'Erreà.
- 3 Confection de l'article personnalisé, avec indication d'éventuels sponsors ou noms/numéros.



### FRONT

- 1 BADGE (h x w cm) .....
- NUMBER (cm h) .....
- 2 LOGO (h x w cm) .....
- 3 LOGO (h x w cm) .....
- 4 LOGO (h x w cm) .....
- 5 LOGO (h x w cm) .....
- 6 LOGO (h x w cm) .....
- 7 LOGO (h x w cm) .....
- 8 LOGO (h x w cm) .....

### RIGHT SLEEVE

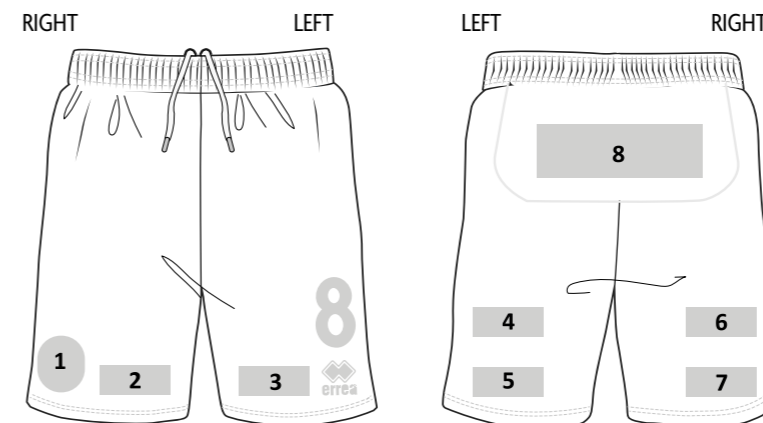
- 9 LOGO (h x w cm) .....
- 10 LOGO (h x w cm) .....
- 11 LOGO (h x w cm) .....

### LEFT SLEEVE

- 12 LOGO (h x w cm) .....
- 13 LOGO (h x w cm) .....
- 14 LOGO (h x w cm) .....

### BACK

- NAME cm h .....
- NUMBER cm h .....
- 15 LOGO (h x w cm) .....
- 16 LOGO (h x w cm) .....
- 17 LOGO (h x w cm) .....
- 18 LOGO (h x w cm) .....
- 19 LOGO (h x w cm) .....
- 20 LOGO (h x w cm) .....
- 21 LOGO (h x w cm) .....
- 22 LOGO (h x w cm) .....



### FRONT

- 1 BADGE (h x w cm) .....
- 2 LOGO (h x w cm) .....
- 3 LOGO (h x w cm) .....
- NUMBER cm h .....

### BACK

- 4 LOGO (h x w cm) .....
  - 5 LOGO (h x w cm) .....
  - 6 LOGO (h x w cm) .....
  - 7 LOGO (h x w cm) .....
  - 8 LOGO (h x w cm) .....
- ONLY SHORT "VIGOR/TRENTINO"

## CONSIGLI PRATICI

1. Invia eventuali grafiche in formato vettoriale.
2. Invia loghi in formato .pdf/.ai/.eps
3. Possibilità di inserire nomi/numeri all'interno dei fogli di stampa. Invia le indicazioni (taglia/nome/numero) al momento della conferma del disegno.

## RECOMMENDATIONS

1. Send any graphic designs in vector format.
2. Send logos in .pdf/.ai/.eps
3. You can also enter names/numbers on print sheets. Send the information (size/name/number) at the time of confirming the design.

## CONSEILS PRATIQUES

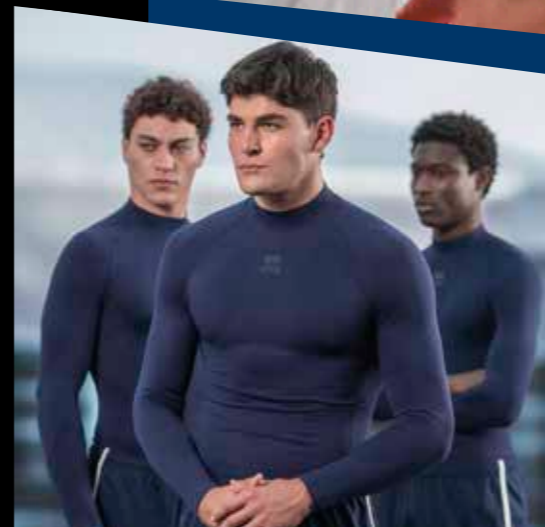
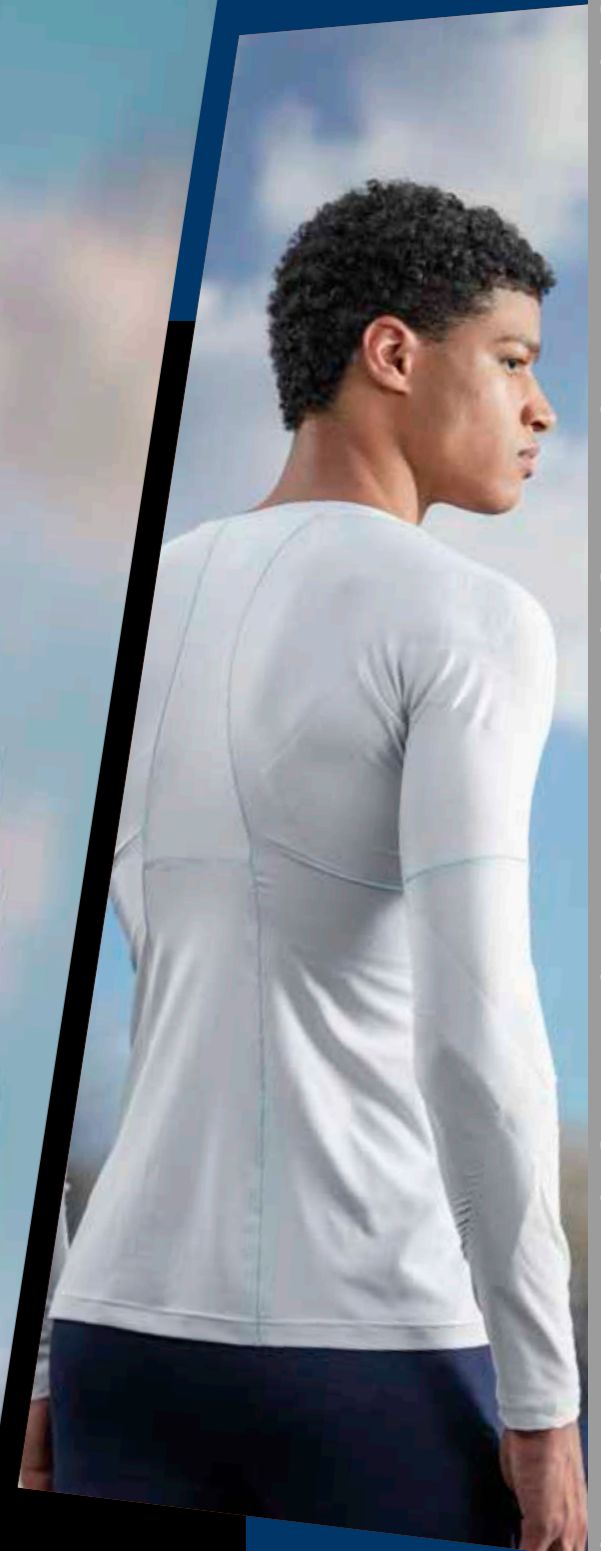
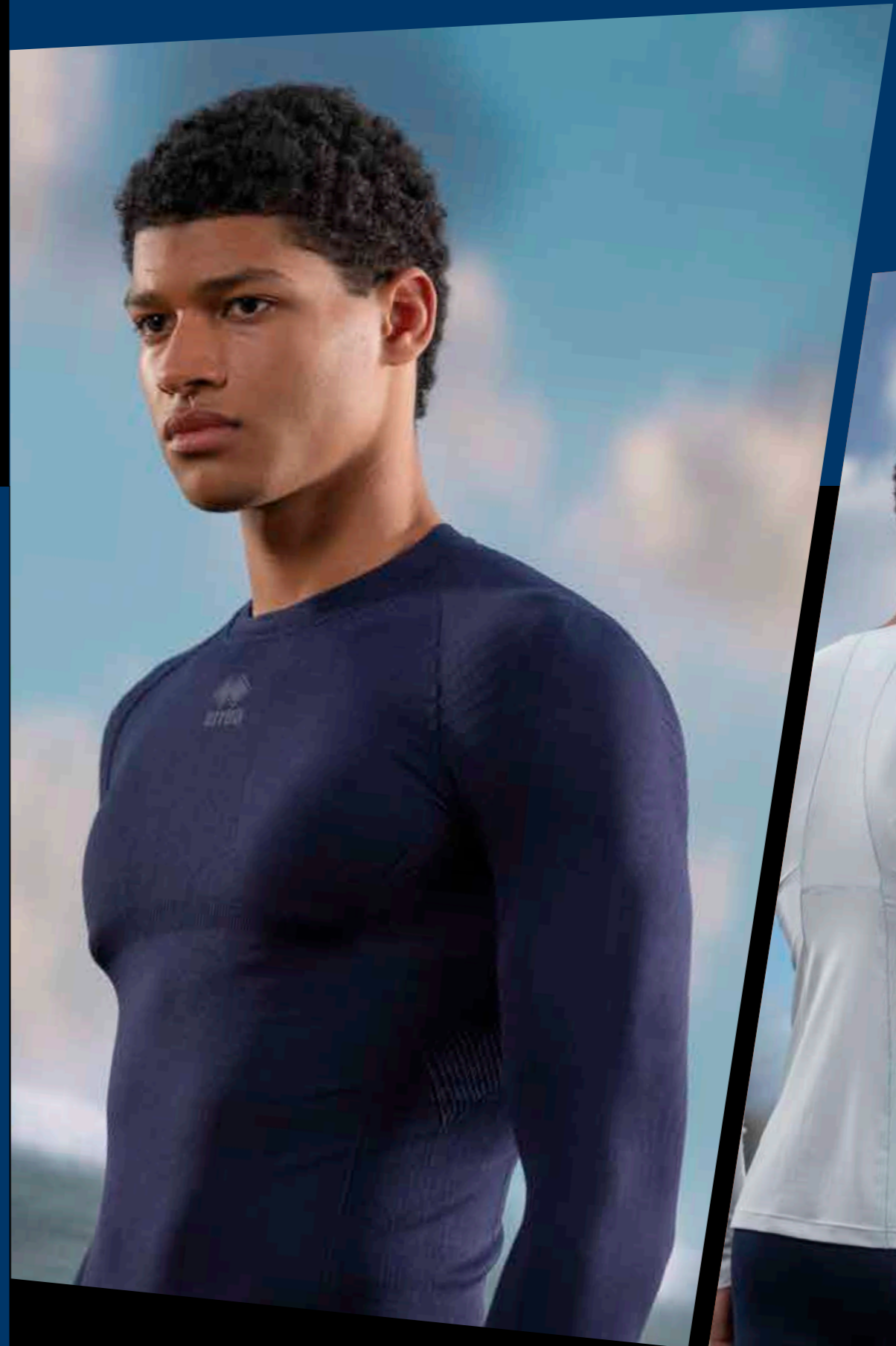
1. Envoi d'éventuels graphismes au format vectoriel.
2. Envoi des logos au format .pdf/.ai/.eps
3. Possibilité d'entrer des noms/numéros dans les feuilles d'impression. Envoi des indications (taille/nom/numéro) lors de la confirmation du dessin.











# BASE LAYER



37080  
white/cyan

## 2026 ADERYN 55

Adult  
**UMOJOC**  
S-XXL

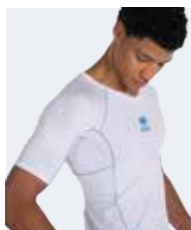


PREMIER 82% polyester 18% elastane - 165 g/mq

- Esoscheletro interno a supporto posturale
- Sostegno mirato per deltoide, tricipite e trapezio, articolazioni delle spalle e cuffie dei rotatori
- Vestibilità aderente
- Costruzione con due tessuti a elasticità differenziata per fornire un sostegno mirato e garantire leggerezza, traspirabilità e resistenza dove serve.
- Fibra leggera e traspirante
- Collo a V
- Nessuna cucitura sotto le ascelle
- Maniche rifinite con tecnologia seamless

- Internal exoskeleton for postural support
- Targeted support for the deltoid, triceps, and trapezius, shoulder joints, and rotator cuffs
- Slim fit
- Construction with two fabrics of differentiated elasticity to provide targeted support and ensure lightness, breathability, and resistance where needed
- Lightweight and breathable fiber
- V-neck
- No seams under the armpits
- Sleeves finished with seamless technology

- Exosquelette interne pour le soutien postural
- Soutien ciblé pour le deltoïde, le triceps et le trapèze, les articulations des épaules et les coiffe des rotateurs
- Coupe ajustée
- Conception avec deux tissus à élasticité différenciée pour offrir un soutien ciblé et garantir légèreté, respirabilité et résistance là où c'est nécessaire
- Fibre légère et respirante
- Col en V
- Aucune couture sous les aisselles
- Manches finies avec la technologie seamless





## 2026 KARIL LS

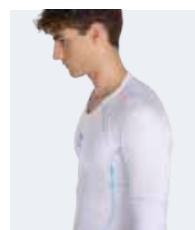
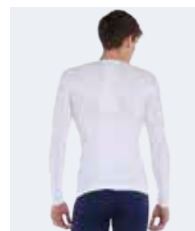
Adult  
**UMOJOL**  
S-XXL



PREMIER 82% polyester 18% elastane - 165 g/mq



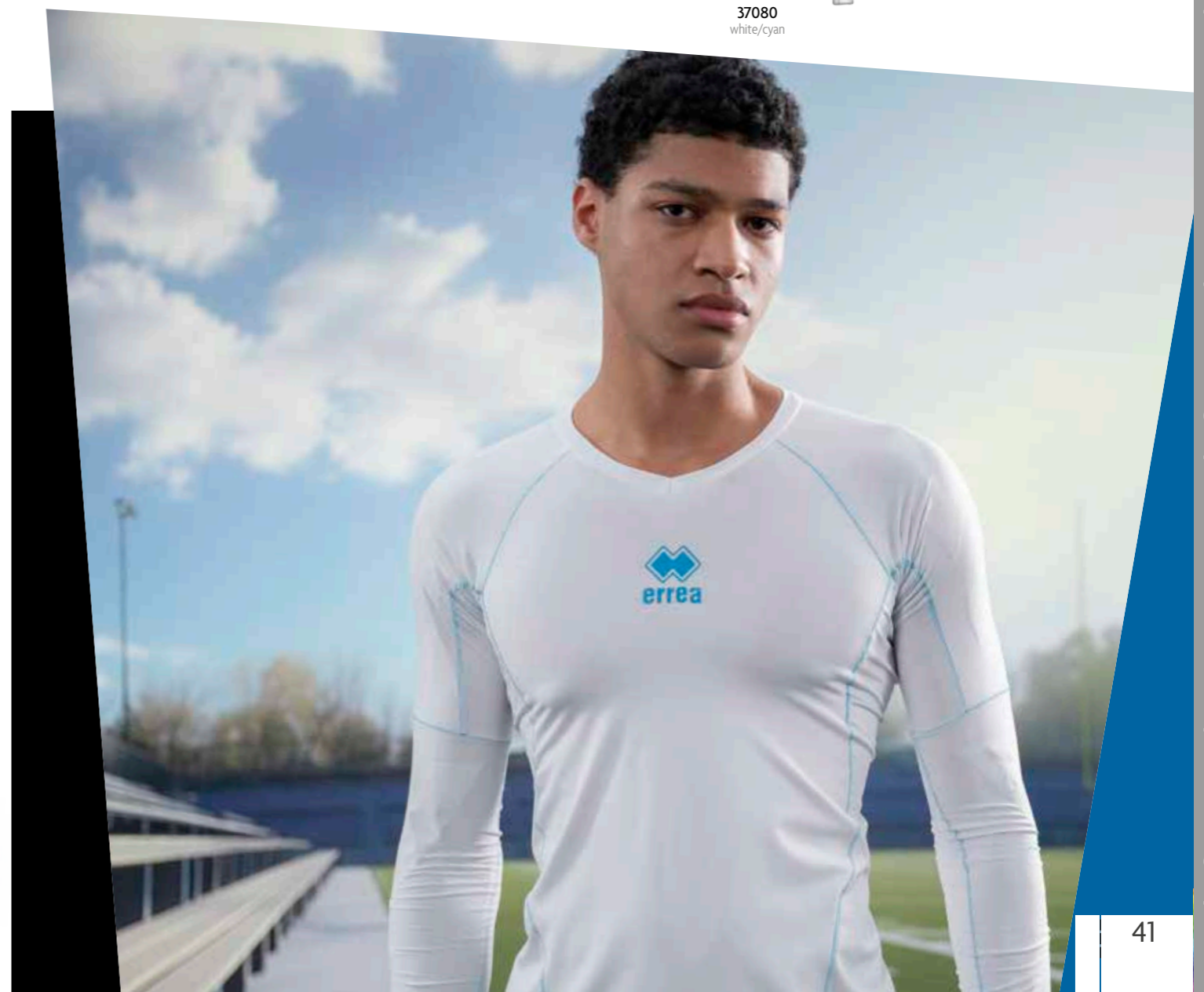
37080  
white/cyan



- Vestibilità aderente per massimo comfort e libertà di movimento durante l'attività sportiva
- Collo a giro progettata per migliorare postura e rendimento
- Esoscheletro a supporto posturale
- Supporto mirato per i muscoli della parte alta della schiena, articolazioni delle spalle e cuffie dei rotatori
- Supporto extra per gomiti e muscoli delle braccia
- Fasce elastiche interne a sostegno del deltoide, tricipite, trapezio
- Riduzione della vibrazione muscolare
- Traspirante
- Cuciture ultra piatte effettuate con tecnologia giapponese
- Film termoadesivo aggrappante
- Tessuto contenente elastomero per una miglior vestibilità
- Tape con certificato Standard 100 by Oeko - Tex

- Close-fitting for maximum comfort during sports activities
- Round neck designed to improve posture and performance
- Exoskeleton for postural support
- Support for muscles in the upper back, shoulders' joints, and rotators' cuffs
- Extra support for elbows and arm muscles
- Internal stretched bands to support deltoids, triceps, and trapezius
- Muscles vibration reduction
- Breathable
- Ultra-flat seams made with Japanese technology
- Adhesive thermofilm
- Fabric containing elastomer for a better fit
- Tape with Standard 100 by Oeko - Tex certification

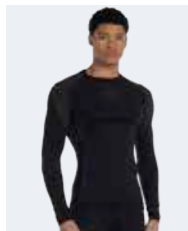
- Coupe ajustée pour un confort maximal et une liberté de mouvement pendant l'activité sportive
- Col rond conçu pour améliorer la posture et les performances
- Exosquelette pour un soutien postural
- Soutien ciblé pour les muscles du haut du dos, les articulations des épaules et les rotateurs
- Support supplémentaire pour les coudes et les muscles des bras
- Bandes élastiques internes pour soutenir le deltoïde, le triceps et le trapèze
- Réduction des vibrations musculaires
- Respirant
- Coutures ultra-plates réalisées avec une technologie japonaise
- Thermofilm adhésif
- Tissu contenant de l'élastomère pour un meilleur ajustement
- Ruban avec certification Standard 100 by Oeko - Tex







00120  
black



## 2026 PERSIA

Adult  
**UMOKOL**  
XS/S - M/L - XL/XXL

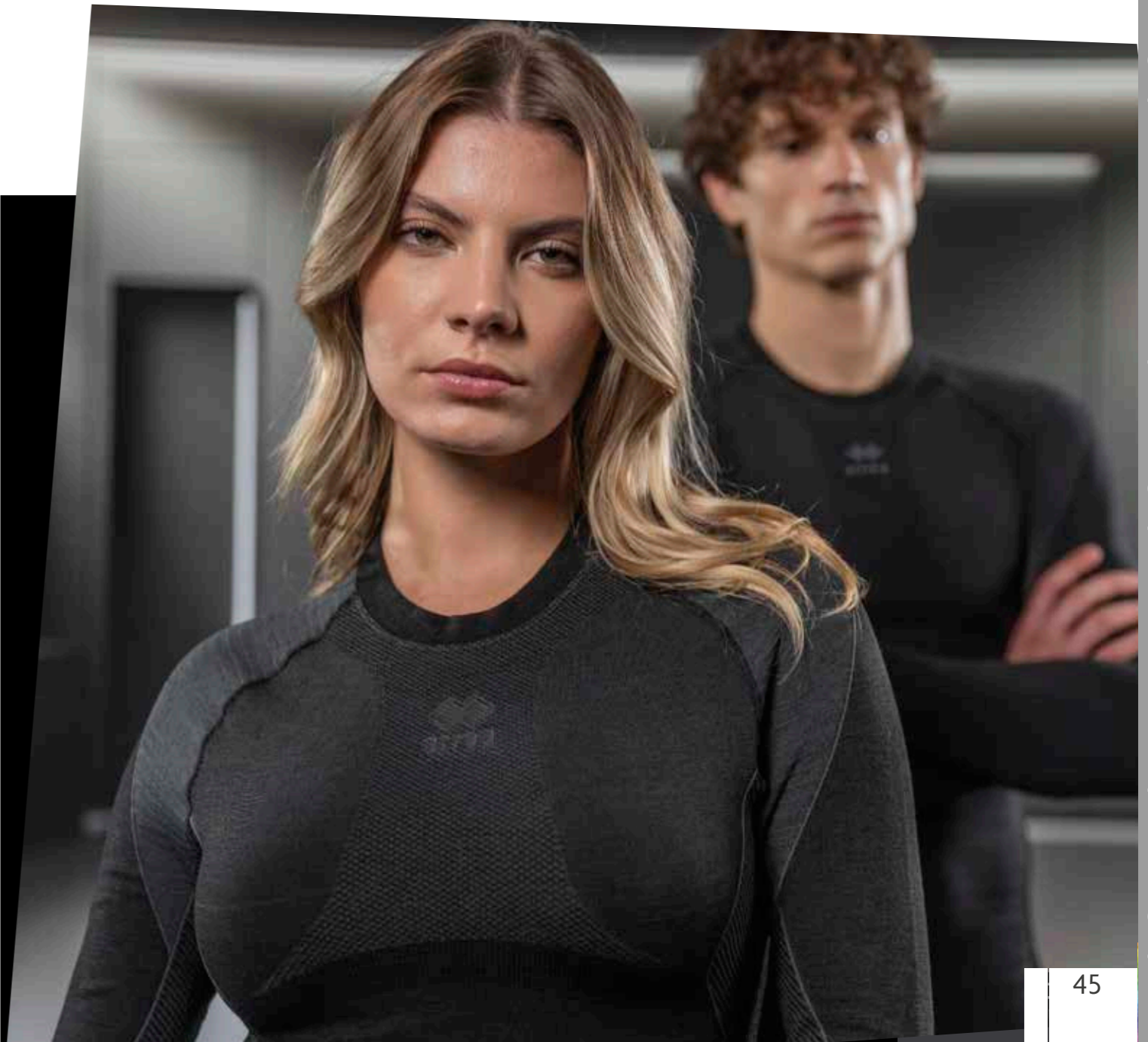


40% WOOL 40% POLYPROPYLENE 15% POLYAMIDE  
5% ELASTANE

- Intimo tecnico invernale
- Collo a Giro
- Traspirante
- Resistente ad abrasioni
- Ottimizza calore, traspirazione, durata
- Vestibilità aderente
- In seamless con un mix di filati ad alto contenuto di lana merinos

- Winter Technical Underwear
- Round Neck
- Breathable
- Abrasion-Resistant
- Optimizes warmth, breathability, durability
- Tight-fitting
- Seamless with a blend of high-content merino-wool yarns

- Sous-vêtements techniques d'hiver
- Col rond
- Respirant
- Résistant à l'abrasion
- Optimise chaleur, respirabilité, durabilité
- Coupe ajustée
- Sans couture avec un mélange de fils à haute teneur en laine mérinos





## 2026 **KELVIN**

Adult **UMOL0L**  
S/M-L/XL-XXL  
Junior **UMOL1L**  
XXS-XS



85% POLYAMIDE 10% POLYESTER 5% ELASTANE

- Manica a giro, collo a lupetto
- Inserti tridimensionali localizzati nella parte superiore
- Effetto "second skin", tecnologia Seamless
- Isolamento termico
- Taschino posteriore porta GPS

- Set-in sleeves, turtleneck
- Three-dimensional inserts on upper portion
- "Second skin" effect, seamless technology
- Thermal insulation
- Back pocket for GPS

- Manches montées, col montant
- Pièces tridimensionnelles situées dans la partie supérieure
- Effet « deuxième peau », technologie sans coutures
- Isolation thermique
- Petite poche arrière porte-GPS



STANDARD 100  
074744.0  
CENTROCOT



## 2026 **KOLE**

Adult **UP0H0Z**  
S/M-L/XL-XXL  
Junior **UP0H1Z**  
YXS-XXS-XS



85% POLYAMIDE 10% POLYESTER 5% ELASTANE

- Alta traspirabilità, Isolamento termico
- Rapido assorbimento del sudore
- Effetto "second skin", tecnologia seamless
- Estrema leggerezza

- High breathability, thermal insulation
- fast sweat absorption
- "Second skin" effect, seamless technology
- Extreme lightness

- Grande respirabilité, Isolation thermique
- Absorption rapide de la transpiration
- Effet « deuxième peau », technologie sans coutures
- Extrême légèreté



STANDARD 100  
074744.0  
CENTROCOT



00090 navy  
00120 black





# 2026 KEN

Adult  
**UMOM0L**  
S/M-L/XL-XXL

Junior  
**UMOM1L**  
XXS-XS



85% POLYAMIDE 10% POLYESTER 5% ELASTANE

- Manica e collo a giro
- Inserti tridimensionali localizzati nella parte superiore
- Effetto "second skin", tecnologia Seamless
- Isolamento termico
- Taschino posteriore porta GPS

- Set-in sleeves and crew neck
- Three-dimensional inserts on upper part
- "Second skin" effect, seamless technology
- Thermal insulation
- Back pocket for GPS

- Manches montées et col rond
- Pièces tridimensionnelles situées dans la partie supérieure
- Effet « deuxième peau », technologie sans coutures
- Isolation thermique
- Petite poche arrière porte-GPS



# 2026 KYRAN

Adult  
**UP010Z**  
S/M-L/XL-XXL

Junior  
**UP011Z**  
XS



85% POLYAMIDE 10% POLYESTER 5% ELASTANE

- Alta traspirabilità, rapido assorbimento del sudore
- Effetto "second skin", tecnologia seamless
- Isolamento termico
- Estrema leggerezza

- High breathability, rapid sweat absorption
- "Second skin" effect, seamless technology
- Thermal insulation
- Extreme lightness

- Grande respirabilité, absorption rapide de la transpiration
- Effet « deuxième peau », technologie sans coutures
- Isolation thermique
- Extrême légèreté













## 2029 ALLENAMENTO

Adult  
**A3010**  
M»XL

Junior  
**A3011**  
XS



46% POLYESTER - 46% COTTON - 8% ELASTANE

- Manica a giro
- Collo a giro
- Isolamento termico
- Mantiene il corpo asciutto e caldo

- Set-in sleeves
- Crew neck
- Thermal insulation
- It keep the body warm and dry

- Manches montées
- Col rond
- Isolation thermique
- Il garde le corps sec et chaud



000001  
white



# ACCESSORIES

## 2029 BIB



Adult **A980** Junior **A981** Kid **A982**



100% POLYESTER - 120 g/mq

- Collo a giro profondo e sbracci ampi
- Wide crew neck and armholes
- Col rond profond et emmanchures amples

**10**

PCS X PACK



000333  
fuchsia fluo



000002  
red



000334  
orange fluo



000331  
yellow fluo



000332  
green fluo



000008  
royal



## 2029 BIB DOUBLE



Adult **C990** Junior **C991**  
M-XL XS



100% POLYESTER - 120 g/mq

- Collo a giro profondo e sbracci ampi
- Double
- Wide crew neck and armholes
- Doubleface
- Col rond profond et emmanchures amples
- Double face

**5**

PCS X PACK



000026  
white/blue



000028  
white/navy



000050  
red/white



001810  
orange fluo/yellow fluo



# 2029 POLYESTERE

Adult **A410** Junior **A411** Kid **A412**



70% POLYESTER 15% COTTON 10% NYLON 5% ELASTANE

- Altezza ginocchio
- Kneesocks
- Chaussettes hauteur genou



# 2029 TRANSPIR

Adult **A405** Junior **A406**



80% NYLON 15% COTTON 5% ELASTANE

- Altezza ginocchio
- Estremamente traspirante
- Microfori sul polpaccio
- Kneesocks
- Highly breathable
- Micro-holes on calf
- Chaussettes hauteur genou
- Extrêmement respirantes
- Microtrous sur le mollet



# 2026 SOCKS PRO

Adult **GC0B0Z** Junior **GC0B1Z**



90% POLYESTER 10% ELASTANE

- Altezza ginocchio
- Estremamente traspirante
- Microfori sul polpaccio
- Knee length
- Highly breathable
- Microholes on the calf
- Hauteur genou
- Extrêmement respirantes
- Microtrous sur le mollet



# 2026 ENERGY GRIPP

Adult **GC0A0Z** M-L-XL



84% POLYAMIDE 14% COTTON 2% ELASTANE

- Calze antiscivolo
- Pad in gomma sul fondo
- Traspiranti
- Anti-slip socks
- Rubber pad on the sole
- Breathable

- Chaussettes antidérapantes
- Tampon en caoutchouc dans le bas
- Respirantes



Fino ad esaurimento scorte  
While stocks last  
Jusqu'à épuisement du stock  
Solange der Vorrat reicht

SIZE ENERGY GRIP:

M:39/41	L: 42/44	XL: 45/47
---------	----------	-----------

# 2029 ZONE

Adult **A400Z** Junior **A401Z** Kid **A402Z**

75% POLYESTER 15% COTTON 7% NYLON 3% ELASTANE

- Altezza ginocchio
- Kneesocks
- Chaussettes hauteur genou





## 2029 ACTIVE

Adult **A432**  
M-L-XL  
Junior **A433**  
XS



80% COTTON 16% NYLON 4% ELASTANE

- Altezza ginocchio
- Zona traspirante sul collo del piede

- Kneesocks
- Breathable zone on instep

- Hauteur genou
- Zone respirante sur le cou-de-pied



000028  
white/navy

000190  
navy/white

000250  
black/white

SOCKS SIZE
XS: 31/34
M: 35/38
L: 39/42
XL: 43/47



## 2029 SKIP

Adult **A422**  
M-L-XL  
Junior **A423**  
XS



80% COTTON 16% NYLON 4% ELASTANE

- Calza corta in cotone
- Zona traspirante sul collo del piede

- Cotton ankle socks
- Breathable zone on instep

- Chaussettes bas en coton
- Zone respirante sur le cou-de-pied



000028  
white/navy

000190  
navy/white

000250  
black/white

SOCKS SIZE
XS: 31/34
M: 35/38
L: 39/42
XL: 43/47



## 2026 JUMP

Adult **FA2R0Z**  
M-L-XL



50% COTTON 50% ELASTANE

- Calza corta in cotone
- Zona traspirante sul collo del piede

- Cotton ankle socks
- Breathable zone on instep

- Chaussettes bas en coton
- Zone respirante sur le cou-de-pied



00280  
white/navy



02500  
black/white

SOCKS SIZE
M: 35/38
L: 39/42
XL: 43/47



## 2029 ALPHA

Adult **FC0A0Z**  
M-L-XL  
Junior **FC0A1Z**  
XS



80% COTTON 20% ELASTANE

- Compressione sull'arco plantare
- Tallone e punta rinforzati

- Compression on arch of the foot
- Reinforced heel and toe

- Compression sur voûte plantaire
- Talon et pointe renforcés



00280  
white/navy

SOCKS SIZE
XS: 31/34
M: 35/38
L: 39/42
XL: 43/47



## 2029 BEST

Adult **FC0B0Z**  
Junior **FC0B1Z**



45% COTTON 45% POLYESTER 10% ELASTANE

- Altezza sopra alla caviglia
- Particolarmente indicata per uso in allenamento

- Height above the ankle
- Particularly recommended for training

- Chaussettes bas en coton montant au-dessus de la cheville
- Spécialement indiquées pour l'entraînement



00010  
white

00090  
navy

00120  
black



## 2029 COMFORT

Adult **A426**  
ONE SIZE



80% COTTON 16% NYLON 4% ELASTANE

- Altezza caviglia
- Zona traspirante sul collo del piede

- Ankle socks
- Breathable zone on instep

- Hauteur cheville
- Zone respirante sur le coup-de-pied



000028  
white/navy

000250  
black/white



## 2029 TRAINING

Adult **A428**  
M-L-XL  
Junior **A429**  
XS



55% COTTON 40% NYLON 5% ELASTANE

- Altezza polpaccio
- Zona traspirante sul polpaccio

- Calf-length socks
- Breathable zone on calf

- Chaussettes hauteur mollet
- Zone respirante sur le mollet



000031  
white/black

000190  
navy/white

SOCKS SIZE
XS: 31/34
M: 35/38
L: 39/42
XL: 43/47





# 2027 SUPER EVO HERITAGE

**HA0C0Z**  
SIZE 3-4-5

## Training

- Costruzione tradizionale a 32 pannelli
- Rivestimento in TPU
- Cucito a mano
- Rinforzo in tessuto multistrato
- Camera d'aria in butile
- Consigliato per l'allenamento di adulti e settori giovanili
- Consigliato per terreni sintetici

- Constructed in 32 panels
- TPU coating
- Hand-stitched
- Reinforcement in multilayered fabric
- Butyl bladder
- Recommended for adult and youth training
- Recommended for synthetic surfaces

- Fabriqué avec 32 pièces
- Revêtement en TPU
- Cousu à la main
- Renforcement en tissu multicouche
- Vessie en butyl
- Recommandé pour l'entraînement des adultes et des jeunes
- Recommandé pour les terrains synthétiques



**42180**  
white/multicolor



**05270**  
white/grey/black

# 2025 COLLEGE ID

**GA1H0Z**  
SIZE 3-4-5



## Training

- Costruzione a 14 pannelli cuciti a macchina
- Composizione multistrato
- Camera d'aria in butile
- Consigliato per giovanili

- Construction with 14 machine-sewn panels
- Multi-layer composition
- Butyl bladder
- Recommended for young players

- Construction à 14 panneaux cousus à la machine
- Composition multicouche
- Chambre à air en butyl
- Conseillé pour jeunes joueurs



**77830**  
white/black/safety orange



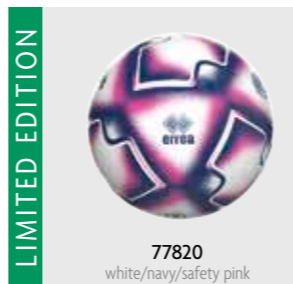
**77840**  
white/navy/safety yellow



**45550**  
white/black/silver



**00410**  
white/navy/red



**77820**  
white/navy/safety pink

LIMITED EDITION

LIMITED EDITION

# 2025 COLLEGE ID SUPERLIGHT 290GR

**GA1M0Z**  
SIZE 3-4-5

## Training

- Costruzione a 14 pannelli cuciti a macchina
- Composizione multistrato
- Camera d'aria in butile
- Consigliato per giovanili
- \_290gr

- Construction with 14 machine-sewn panels
- Multi-layer composition
- Butyl bladder
- Recommended for young players
- \_290gr

- Construction à 14 panneaux cousus à la machine
- Composition multicouche
- Chambre à air en butyl
- Conseillé pour jeunes joueurs
- \_290gr



**49550**  
white/royal/cyan



LIMITED EDITION

# 2025 COLLEGE ID SUPERLIGHT 350GR

**GA1N0Z**  
SIZE 3-4-5

## Training

- Costruzione a 14 pannelli cuciti a macchina
- Composizione multistrato
- Camera d'aria in butile
- Consigliato per giovanili
- \_350gr

- Construction with 14 machine-sewn panels
- Multi-layer composition
- Butyl bladder
- Recommended for young players
- \_350gr

- Construction à 14 panneaux cousus à la machine
- Composition multicouche
- Chambre à air en butyl
- Conseillé pour jeunes joueurs
- \_350gr



**79570**  
white/navy/turquoise



## 2029 TRICK

**T0074**  
ONE SIZE

### Training

- Specifico per portieri
- Forma particolare per allenare i riflessi sfruttando i rimbalzi e le traiettorie irregolari
- Designed for goalkeepers
- Unusual shape to improve reflexes when reacting to irregular bounces and trajectories
- Spécifique pour les gardiens
- Forme particulière pour l'entraînement grâce aux rebonds et aux trajectoires irrégulières



**000281**  
orange/black

## 2025 GO KICK

**GA1C0Z**  
ONE SIZE

### Training

- Kit professionale per l'allenamento e per il perfezionamento della tecnica individuale
- Cintura in neoprene con velcro regolabile
- Elastico estensibile regolabile
- Porta pallone in neoprene regolabile con velcro per contenere il pallone nelle taglie 3-4-5.

- Professional kit for training and to improve individual technique
- Neoprene belt, adjustable with Velcro
- Extensible adjustable elastic
- Neoprene ball holder, adjustable with Velcro, for size 3-4-5 balls

- Kit professionnel pour l'entraînement et pour le perfectionnement de la technique individuelle
- Ceinture en néoprène réglable avec velcro
- Élastique extensible réglable
- Porte ballons en néoprène réglable avec velcro pour contenir des ballons de taille 3-4-5.



**01700**  
royal/white



## 2027 HURAN HYBRID HERITAGE

FIFA  
QUALITY

**HA0B0Z**  
SIZE 4



### Competition

- Costruzione con 14 pannelli cuciti a macchina e termosaldati
- Rivestimento in PU
- Strati interni multipli
- Camera d'aria in butile
- Rimbalzo controllato
- Certificazione FIFA QUALITY

- Construction with 14 machine-stitched and thermally bonded panels
- PU coating
- Multiple internal layers
- Butyl bladder
- Controlled bounce
- FIFA QUALITY certified

- 14 panneaux cousus à la machine et thermosoudés
- Revêtement en PU
- Couches internes multiples
- Vessie en butyl
- Rebond contrôlé
- FIFA QUALITY certifié



**04980**  
white/blue/orange

## 2027 STORM HERITAGE FUTSAL

**HA0H0Z**  
SIZE 4

### Training

- Costruzione con 28 pannelli e rinforzo multistrato in poliestere
- Rivestimento texturizzato in TPU
- Strati interni multipli
- Cucito a mano
- Camera d'aria in butile
- Rimbalzo controllato

- Construction with 28 panels and multilayer polyester reinforcement
- Textured TPU covering
- Multiple internal layers
- Hand-stitched
- Butyl bladder
- Controlled bounce

- Construction à 28 panneaux en tissu multicouche
- Revêtement en TPU texturisé
- Couches internes multiples
- Cousu à la main
- Vessie en butyl
- Rebond contrôlé



**97010**  
white/anthracite/safety yellow

# 2027 MINI BALL SOCCER

HA0U0Z  
ONE SIZE



- Costruzione con 28 pannelli
- Rivestimento in TPU
- Cucitura a macchina
- Camera d'aria in gomma
- Diametro 15 cm

- 28-panel construction
- TPU coating
- Machine-stitched
- Rubber bladder
- Diameter 15 cm

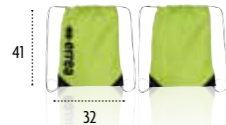
- Construction à 28 panneaux
- Revêtement TPU
- Cousu à la machine
- Vessie caoutchouc
- Diamètre 15cm



96980  
yellow/navy/fuxia

# 2029 LUIS

EA1F0Z



100% POLYESTER



00120  
black



00090  
navy

04930  
orange fluo/black



59120  
green fluo/black

04920  
yellow fluo/black

# 2026 BARRIE

600D POLYESTER

GA0G0Z  
20 LT



32540  
anthracite/black

# 2029 BENGALA

GA0F0Z  
24 LT



00070  
blue



00020  
red

00090  
navy

00120  
black

04920  
yellow fluo/black

59120  
green fluo/black

# 2029 PRO

T0303  
80 LT

600D POLYESTER



000158  
blue/navy



000058  
red/navy



000009  
navy



000012  
black

Fino ad esaurimento scorte/While stocks last/Jusqu'à épuisement du stock/Solange der Vorrat reicht

# 2029 BASIC

T0313  
78 LT

600D POLYESTER

25720  
H CM 15



000007  
blue

# 2029 BASIC MEDIA

T0313M  
49 LT

600D POLYESTER

25705  
H CM 10



000009  
navy

000012  
black

000015  
maroon



000002  
red



000004  
green

# 2025 BASIC KID

Fino ad esaurimento scorte  
While stocks last  
Jusqu'à épuisement du stock

DA0U0Z  
26 LT

600D POLYESTER

25735  
H CM 12



ONLY  
• BASIC  
• BASIC MEDIA

Fino ad esaurimento scorte  
While stocks last  
Jusqu'à épuisement du stock  
Solange der Vorrat reicht



07720  
black/yellow fluo



08180  
black/green fluo



07830  
black/orange fluo

# 2025 BOOKER

GA010Z  
33 LT



600D POLYESTER



32540  
anthracite/black



01500  
blue/white

01900  
navy/white



02500  
black/white



25735  
H CM 12

# 2029 LYNOS

EA1A0Z  
33 LT



600D POLYESTER



01920  
navy/yellow



01580  
blue/navy

02000  
navy/grey



01910  
navy/red

02600  
black/grey



25735  
H CM 12

# 2029 THOR

EA3D0Z  
25 LT



600D POLYESTER



00090  
navy



00120  
black



08180  
black/green fluo



07830  
black/orange fluo



07720  
black/yellow fluo

# 2028 ROY

HA000Z  
23 LT



600D POLYESTER



00070  
blue



00020  
red



00090  
navy



00120  
black

# 2025 BOOKER KID

GA0J0Z  
23 LT



600D POLYESTER



32540  
anthracite/black



01500  
blue/white



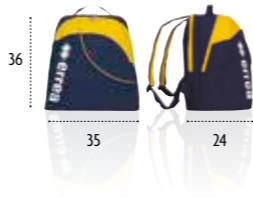
02500  
black/white



01900  
navy/white

# 2029 LYNOS KID

EA1B0Z  
23 LT



600D POLYESTER



01920  
navy/yellow



01580  
blue/navy



02000  
navy/grey



01910  
navy/red



02600  
black/grey

# 2029 MERCURY

T0347  
38 LT



600D POLYESTER



00007  
blue



000009  
navy



000015  
maroon



000012  
black



000004  
green



000002  
red



25735  
H CM 12

# 2029 TOBAGO

T0389  
15 LT



600D POLYESTER



000002  
red



000009  
navy



000015  
maroon



000012  
black



000004  
green



000007  
blue











**errea**

**ERREÀ SPORT S.p.A.**

Via G. Di Vittorio, 2/1  
43056 S. Polo di Torrile (Parma) - Italy

[errea.com](http://errea.com)  
[info@errea.it](mailto:info@errea.it)

CERTIFIED QUALITY  
MANAGEMENT SYSTEM

**CQY**  
CERTIQUALITY

UNI EN ISO 9001:2015



**GOAL KEEPER**



PRODOTTI DAI  
PRODUTTORI DAL  
**1988**