



# ACCESSORIES

LOOK EVAN  
LOOK MARK  
LOOK CURTIS  
LOOK BRANDON  
LOOK CLASSIC  
TROUSERS  
GOALKEEPERS COMPETITION  
BASKET  
RUGBY  
ATHLETICS  
PADEL  
JACKETS  
BASE LAYER  
ACCESSORIES

## 2029 BIB



Adult **A980** Junior **A981** Kid **A982**



100% POLYESTER-120 g/mq

- Collo a giro profondo e sbracci ampi
- Wide crew neck and armholes
- Col rond profond et emmanchures amples

**10**  
PCS X PACK



000333 fuchsia fluo  
000002 red  
000334 orange fluo  
000331 yellow fluo  
000332 green fluo  
000008 royal



## 2029 BIB DOUBLE



Adult **C990** Junior **C991**  
M-XL XS



100% POLYESTER-120 g/mq

- Collo a giro profondo e sbracci ampi
- Double
- Wide crew neck and armholes
- Doubleface
- Col rond profond et emmanchures amples
- Double face

**5**  
PCS X PACK



000026 white/blue  
000028 white/navy  
000050 red/white  
001810 orange fluo/yellow fluo



# 2029 POLYESTERE

Adult **A410** Junior **A411** Kid **A412**



70% POLYESTER 15% COTTON 10% NYLON 5% ELASTANE

- Altezza ginocchio
- Kneesocks
- Chaussettes hauteur genou



# 2029 TRANSPIR

Adult **A405** Junior **A406**



80% NYLON 15% COTTON 5% ELASTANE

- Altezza ginocchio
- Estremamente traspirante
- Microfori sul polpaccio
- Kneesocks
- Highly breathable
- Micro-holes on calf
- Chaussettes hauteur genou
- Extrêmement respirantes
- Microtrous sur le mollet



# 2026 SOCKS PRO

Adult **GC0B0Z** Junior **GC0B1Z**



90% POLYESTER 10% ELASTANE

- Altezza ginocchio
- Estremamente traspirante
- Microfori sul polpaccio
- Knee length
- Highly breathable
- Microholes on the calf
- Hauteur genou
- Extrêmement respirantes
- Microtrous sur le mollet



# 2026 ENERGY GRIPP

Adult **GC0A0Z**  
M-L-XL



84% POLYAMIDE 14% COTTON 2% ELASTANE

- Calze antiscivolo
- Pad in gomma sul fondo
- Traspiranti
- Anti-slip socks
- Rubber pad on the sole
- Breathable

- Chaussettes antidérapantes
- Tampon en caoutchouc dans le bas
- Respirantes



SIZE ENERGY GRIP:

M:39/41	L: 42/44	XL: 45/47
---------	----------	-----------

# 2029 ZONE

Adult **A400Z** Junior **A401Z** Kid **A402Z**

75% POLYESTER 15% COTTON 7% NYLON 3% ELASTANE

- Altezza ginocchio
- Kneesocks
- Chaussettes hauteur genou



## 2029 ACTIVE

Adult **A432**  
M-L-XL

Junior **A433**  
XS

80% COTTON 16% NYLON 4% ELASTANE

- Altezza ginocchio
- Zona traspirante sul collo del piede
- Kneesocks
- Breathable zone on instep
- Hauteur genou
- Zone respirante sur le cou-de-pied



000028  
white/navy

000190  
navy/white

000250  
black/white

SOCKS SIZE
XS: 31/34
M: 35/38
L: 39/42
XL: 43/47

OEKO  
TEX®  
STANDARD  
100  
074744.0  
CENTROCOT

## 2029 BEST

Adult **FC0B0Z**  
Junior **FC0B1Z**

45% COTTON 45% POLYESTER 10% ELASTANE

- Altezza sopra alla caviglia
- Particolarmente indicata per uso in allenamento
- Height above the ankle
- Particularly recommended for training

- Chaussettes bas en coton montant au-dessus de la cheville
- Spécialement indiquées pour l'entraînement



00010  
white

00090  
navy

00120  
black

OEKO  
TEX®  
STANDARD  
100  
074744.0  
CENTROCOT

## 2029 SKIP

Adult **A422**  
M-L-XL

Junior **A423**  
XS

80% COTTON 16% NYLON 4% ELASTANE

- Calza corta in cotone
- Zona traspirante sul collo del piede
- Cotton ankle socks
- Breathable zone on instep
- Chaussettes bas en coton
- Zone respirante sur le cou-de-pied



000028  
white/navy

000190  
navy/white

000250  
black/white

SOCKS SIZE
XS: 31/34
M: 35/38
L: 39/42
XL: 43/47

OEKO  
TEX®  
STANDARD  
100  
074744.0  
CENTROCOT

## 2029 COMFORT

Adult **A426**  
ONE SIZE

80% COTTON 16% NYLON 4% ELASTANE

- Altezza caviglia
- Zona traspirante sul collo del piede
- Ankle socks
- Breathable zone on instep
- Hauteur cheville
- Zone respirante sur le coup-de-pied



000028  
white/navy

000250  
black/white

OEKO  
TEX®  
STANDARD  
100  
074744.0  
CENTROCOT

## 2026 JUMP

Adult **FA2R0Z**  
M-L-XL

50% COTTON 50% ELASTANE

- Calza corta in cotone
- Zona traspirante sul collo del piede
- Cotton ankle socks
- Breathable zone on instep
- Chaussettes bas en coton
- Zone respirante sur le cou-de-pied



00280  
white/navy



02500  
black/white

SOCKS SIZE
M: 35/38
L: 39/42
XL: 43/47

OEKO  
TEX®  
STANDARD  
100  
074744.0  
CENTROCOT

## 2029 ALPHA

Adult **FC0A0Z**  
M-L-XL

Junior **FC0A1Z**  
XS

80% COTTON 20% ELASTANE

- Compressione sull'arco plantare
- Tallone e punta rinforzati
- Compression on arch of the foot
- Reinforced heel and toe
- Compression sur voûte plantaire
- Talon et pointe renforcés



00280  
white/navy

SOCKS SIZE
XS: 31/34
M: 35/38
L: 39/42
XL: 43/47

OEKO  
TEX®  
STANDARD  
100  
074744.0  
CENTROCOT

## 2029 TRAINING

Adult **A428**  
M-L-XL

Junior **A429**  
XS

55% COTTON 40% NYLON 5% ELASTANE

- Altezza polpaccio
- Zona traspirante sul polpaccio
- Calf-length socks
- Breathable zone on calf
- Chaussettes hauteur mollet
- Zone respirante sur le mollet



000031  
white/black

000190  
navy/white

SOCKS SIZE
XS: 31/34
M: 35/38
L: 39/42
XL: 43/47

OEKO  
TEX®  
STANDARD  
100  
074744.0  
CENTROCOT

# 2025 PRO35

## GA100Z

SIZE 5



Competition

- Costruzione a 14 pannelli termosaldati
- Rinforzo in tessuto multistrato
- Rivestimento in HEXA 1.2 texturizzata
- Consigliato per adulti
- Certificato FIFA QUALITY PRO

- Construction with 14 thermally bonded panels
- Multi-layered fabric reinforcement
- Coated in textured HEXA 1.2
- Recommended for adult players
- FIFA QUALITY PRO certified

- Construction avec 14 panneaux thermosoudés
- Renfort en tissu multicouche
- Revêtement en HEXA 1.2 texturisée
- Conseillé pour adultes
- Certifié FIFA QUALITY PRO



16130  
white/black/gold



# 2027 NEW GARA ELITE

## HA0A0Z

SIZE 5



Competition

- Costruzione a 14 pannelli termosaldati
- Scanalature aerodinamiche in alta frequenza
- Rivestimento Hi-Tech PU texturizzato
- Camera d'aria rinforzata con patch in poliestere
- Certificato FIFA QUALITY PRO
- Consigliato per la gara

- 14-panel thermally bonded construction
- High-frequency aerodynamic grooves
- Textured Hi-Tech PU coating
- Reinforced air chamber with polyester patch
- FIFA QUALITY PRO certified
- Recommended for match play

- Construction à 14 panneaux thermosoudés
- Rainures aérodynamiques haute fréquence
- Revêtement PU texturé haute technologie
- Chambre à air renforcée avec patch en polyester
- Certifié FIFA QUALITY PRO
- Recommandé pour les compétitions



96960  
white/safety yellow/cyan



96970  
safety yellow/navy/cyan



# 2027 STREAM HYBRID HERITAGE

## HA0D0Z

SIZE 4-5



Competition/Training

- Costruzione con 14 pannelli cuciti a macchina e termosaldati
- Rivestimento con superficie texturizzata Diamond PU
- Camera d'aria in butile di Taiwan rinforzata e avvolta con filamenti di poliestere
- Certificazione FIFA QUALITY

- Hybrid construction with 14 machine-stitched and thermally bonded panels
- Coated in a textured Diamond PU surface
- Reinforced Taiwanese butyl bladder wrapped in polyester filaments
- FIFA QUALITY certified

- Construction Hybrid avec 14 panneaux cousus à la machine et thermosoudés
- Revêtement à la surface texturisée Diamond PU
- Vessie en caoutchouc butyle de Taiwan renforcée et enveloppée de fils de polyester
- FIFA QUALITY certifié



14530  
white/blue/cyano



18110  
white/black/grey



30960  
yellow/navy/cyano



00410  
white/navy/red



# 2027 MERCURIO HERITAGE

## HA0G0Z

SIZE 3-4-5



Training

- Costruzione a 28 pannelli
- Rivestimento in TPU texturizzato
- Cucito a mano
- Rinforzo in tessuto multistrato
- Camera d'aria in butile
- Consigliato per adulti e giovanili

- Constructed in 28 panels
- Textured TPU covering
- Hand-stitched
- Multi-layered fabric reinforcement
- Butyl bladder
- Suggested for adult and young players

- Fabriqué avec 28 pièces
- Revêtement en TPU texturisé
- Cousu à la main
- Renfort en tissu multicouche
- Vessie en buty
- Conseillé pour adultes et jeunes joueurs



00410  
white/navy/red



33790  
white/navy/cyan



37090  
white/black/green fluo



96980  
yellow/navy/fuxia

# 2027 SUPER EVO HERITAGE

**HA0C0Z**  
SIZE 3-4-5

## Training

- Costruzione tradizionale a 32 pannelli
- Rivestimento in TPU
- Cucito a mano
- Rinforzo in tessuto multistrato
- Camera d'aria in butile
- Consigliato per l'allenamento di adulti e settori giovanili
- Consigliato per terreni sintetici

- Constructed in 32 panels
- TPU coating
- Hand-stitched
- Reinforcement in multilayered fabric
- Butyl bladder
- Recommended for adult and youth training
- Recommended for synthetic surfaces

- Fabriqué avec 32 pièces
- Revêtement en TPU
- Cousu à la main
- Renforcement en tissu multicouche
- Vessie en butyl
- Recommandé pour l'entraînement des adultes et des jeunes
- Recommandé pour les terrains synthétiques



# 2025 COLLEGE ID

**GA1H0Z**  
SIZE 3-4-5



## Training

- Costruzione a 14 pannelli cuciti a macchina
- Composizione multistrato
- Camera d'aria in butile
- Consigliato per giovanili

- Construction with 14 machine-sewn panels
- Multi-layer composition
- Butyl bladder
- Recommended for young players

- Construction à 14 panneaux cousus à la machine
- Composition multicouche
- Chambre à air en butyl
- Conseillé pour jeunes joueurs



LIMITED EDITION

# 2025 COLLEGE ID SUPERLIGHT 290GR

**GA1M0Z**  
SIZE 3-4-5

## Training

- Costruzione a 14 pannelli cuciti a macchina
- Composizione multistrato
- Camera d'aria in butile
- Consigliato per giovanili
- \_290gr

- Construction with 14 machine-sewn panels
- Multi-layer composition
- Butyl bladder
- Recommended for young players
- \_290gr

- Construction à 14 panneaux cousus à la machine
- Composition multicouche
- Chambre à air en butyl
- Conseillé pour jeunes joueurs
- \_290gr



# 2025 COLLEGE ID SUPERLIGHT 350GR

**GA1N0Z**  
SIZE 3-4-5

## Training

- Costruzione a 14 pannelli cuciti a macchina
- Composizione multistrato
- Camera d'aria in butile
- Consigliato per giovanili
- \_350gr

- Construction with 14 machine-sewn panels
- Multi-layer composition
- Butyl bladder
- Recommended for young players
- \_350gr

- Construction à 14 panneaux cousus à la machine
- Composition multicouche
- Chambre à air en butyl
- Conseillé pour jeunes joueurs
- \_350gr



## 2029 TRICK

T0074  
ONE SIZE

### Training

- Specifico per portieri
- Forma particolare per allenare i riflessi sfruttando i rimbalzi e le traiettorie irregolari
- Designed for goalkeepers
- Unusual shape to improve reflexes when reacting to irregular bounces and trajectories
- Spécifique pour les gardiens
- Forme particulière pour l'entraînement grâce aux rebonds et aux trajectoires irrégulières



000281  
orange/black

## 2025 GO KICK

GA1C0Z  
ONE SIZE

### Training

- Kit professionale per l'allenamento e per il perfezionamento della tecnica individuale
- Cintura in neoprene con velcro regolabile
- Elastico estensibile regolabile
- Porta pallone in neoprene regolabile con velcro per contenere il pallone nelle taglie 3-4-5.

- Professional kit for training and to improve individual technique
- Neoprene belt, adjustable with Velcro
- Extensible adjustable elastic
- Neoprene ball holder, adjustable with Velcro, for size 3-4-5 balls

- Kit professionnel pour l'entraînement et pour le perfectionnement de la technique individuelle
- Ceinture en néoprène réglable avec velcro
- Élastique extensible réglable
- Porte ballons en néoprène réglable avec velcro pour contenir des ballons de taille 3-4-5.



01700  
royal/white



## 2027 HURAN HYBRID HERITAGE

FIFA  
QUALITY

HA0B0Z  
SIZE 4

FIFA  
QUALITY

### Competition

- Costruzione con 14 pannelli cuciti a macchina e termosaldati
- Rivestimento in PU
- Strati interni multipli
- Camera d'aria in butile
- Rimbalzo controllato
- Certificazione FIFA QUALITY

- Construction with 14 machine-stitched and thermally bonded panels
- PU coating
- Multiple internal layers
- Butyl bladder
- Controlled bounce
- FIFA QUALITY certified

- 14 panneaux cousus à la machine et thermosoudés
- Revêtement en PU
- Couches internes multiples
- Vessie en butyl
- Rebond contrôlé
- FIFA QUALITY certifié



04980  
white/blue/orange

## 2027 STORM HERITAGE FUTSAL

HA0H0Z  
SIZE 4

### Training

- Costruzione con 28 pannelli e rinforzo multistrato in poliestere
- Rivestimento texturizzato in TPU
- Strati interni multipli
- Cucito a mano
- Camera d'aria in butile
- Rimbalzo controllato

- Construction with 28 panels and multilayer polyester reinforcement
- Textured TPU covering
- Multiple internal layers
- Hand-stitched
- Butyl bladder
- Controlled bounce

- Construction à 28 panneaux en tissu multicouche
- Revêtement en TPU texturé
- Couches internes multiples
- Cousu à la main
- Vessie en butyl
- Rebond contrôlé



97010  
white/anthracite/safety yellow

## 2027 RUGBY PREMIUM HERITAGE

**HAOLOZ**  
SIZE 5

### Competition

- Competizione
- New Grip Tech
- 4 Lastre di poliestere
- Gomma resistente
- Cucito a mano
- Camera d'aria in lattice naturale

- Competition
- New Grip Tech
- 4 polyester layers
- Durable rubber
- Hand-stitched
- Natural latex bladder

- Concours
- New Grip Tech
- 4 couches de polyester
- Caoutchouc durable
- Cousu à la main
- Vessie en latex naturel



97040  
white/black/anthracite/yellow



## 2025 RUGBY SUPER SKILL

**GAOS0Z**  
SIZE 4-5

### Training

- Grip Basic
- 3 lastre di poliestere
- Gomma naturale
- Cucito a mano
- Camera d'aria in lattice naturale

- Grip Basic
- 3 polyester layers
- Natural rubber
- Hand-stitched
- Natural latex bladder

- Grip Basic
- 3 couches de polyester
- Caoutchouc naturel
- Cousu à la main
- Vessie en latex naturel



71540  
yellow fluo/navy/green fluo



## 2027 RUGBY ACADEMY HERITAGE

**HAOJ0Z**  
SIZE 3-4-5



### Training

- New Grip Tech
- 3 lastre di poliestere
- Gomma naturale
- Cucito a mano
- Camera d'aria in lattice naturale

- New Grip Tech
- 3 polyester layers
- Natural rubber
- Hand-stitched
- Natural latex bladder

- New Grip Tech
- 3 couches de polyester
- Caoutchouc naturel
- Cousu à la main
- Vessie en latex naturel



05120  
white/red/navy





## 2027 VER8P ID HERITAGE

**HA0S0Z**  
SIZE 5

Training

- Peso 230-250 Gr.
- Circonferenza 65 - 67 cm.
- Camera d'aria in butile
- Rivestimento interno in nylon
- Rivestimento esterno in EVA

- Weight: 230-250 Gr.
- Circumference: 65 - 67 cm.
- Butyl bladder
- Nylon internal coating
- EVA External coating

- Poids 230-250 Gr.
- Circonférence 65 - 67 cm.
- Vessie en butyl
- Revêtement intérieur en nylon
- Revêtement extérieur en EVA



03780  
white/navy/yellow



54230  
white/purple/fuxia



## 2027 RA ID HERITAGE

**HA0I0Z**  
SIZE 5-6-7



Indoor

- Costruzione con 8 pannelli
- Rivestimento esterno in gomma
- Camera d'aria in butile
- Rivestimento interno in nylon
- Consigliato per l'utilizzo indoor

- 8-panel construction
- Rubber outer coating
- Butyl air chamber
- Nylon inner coating
- Recommended for indoor use

- Construction à 8 panneaux
- Revêtement extérieur en caoutchouc
- Chambre à air en butyle
- Revêtement intérieur en nylon
- Recommandé pour une utilisation en intérieur



96990  
red/cyan/amber/black



97000  
navy/safety yellow/cyan

## 2027 MINI BALL SOCCER

**HA0U0Z**  
ONE SIZE



- Costruzione con 28 pannelli
- Rivestimento in TPU
- Cucitura a macchina
- Camera d'aria in gomma
- Diametro 15 cm

- 28-panel construction
- TPU coating
- Machine-stitched
- Rubber bladder
- Diameter 15 cm

- Construction à 28 panneaux
- Revêtement TPU
- Cousu à la machine
- Vessie caoutchouc
- Diamètre 15cm



96980  
yellow/navy/fuxia

## 2027 MINI BALL VOLLEY HERITAGE

**HA0R0Z**  
ONE SIZE

- Costruzione con 18 pannelli
- Rivestimento in PVC
- Cucitura a macchina
- Camera d'aria in gomma
- Diametro 15 cm

- 18-panel construction
- PVC coating
- Machine-stitched
- Rubber bladder
- Diameter 15 cm

- Construction à 18 panneaux
- Revêtement PVC
- Cousu à la machine
- Chambre à air caoutchouc
- Diamètre 15 cm



54230  
white/purple/fuxia

## 2027 MINI BALL RUGBY HERITAGE

**HAOKOZ**  
ONE SIZE



- New Grip Tech
- 2 lastre di poliestere
- Cucitura a mano
- Camera d'aria in lattice naturale
- Lunghezza 18 cm

- New Grip Tech
- 2 polyester layers
- Hand-stitched
- Natural latex bladder
- 18cm long

- New Grip Tech
- 2 panneaux en polyester
- Cousu à la main
- Doté d'une vessie en latex nature
- Longueur 18cm



**05120**  
white/red/navy

## 2027 MINI BALL BASKET ID HERITAGE

**HAOTOZ**  
ONE SIZE



- Camera d'aria in butile
- Rivestimento interno in nylon
- Diametro 13 cm
- Costruzione con 8 pannelli
- Rivestimento esterno in gomma
- Camera d'aria in butile
- Rivestimento interno in nylon

- Butyl bladder
- Nylon internal coating
- Diameter 13 cm
- 8-panel construction
- Rubber outer coating
- Butyl air chamber
- Nylon inner coating

- Chambre d'air en butyle
- Revêtement intérieur en nylon
- Diamètre 13 cm
- Construction à 8 panneaux
- Revêtement extérieur en caoutchouc
- Chambre à air en butyle
- Revêtement intérieur en nylon



**97000**  
navy/safety yellow/cyan

## 2029 PRO

**T0303**  
80 LT

600D POLYESTER



**000158**  
blue/navy



**000058**  
red/navy



**000009**  
navy



**000012**  
black

Fino ad esaurimento scorte/While stocks last/Jusqu'à épuisement du stock/Solange der Vorrat reicht

## 2029 BASIC

**T0313**  
78 LT

600D POLYESTER

**25720**  
H CM 15



**000007**  
blue

## 2029 BASIC MEDIA

**T0313M**  
49 LT

600D POLYESTER

**25705**  
H CM 10



**000009**  
navy



**000012**  
black



**000015**  
maroon



**000002**  
red



**000004**  
green

## 2025 BASIC KID

Fino ad esaurimento scorte  
While stocks last  
Jusqu'à épuisement du stock

**DA0U0Z**  
26 LT

600D POLYESTER

**25735**  
H CM 12



ONLY  
• BASIC  
• BASIC MEDIA

Fino ad esaurimento scorte  
While stocks last  
Jusqu'à épuisement du stock  
Solange der Vorrat reicht



**07720**  
black/yellow fluo



**08180**  
black/green fluo



**07830**  
black/orange fluo

# 2026 BAJA GRANDE

**GA0B0Z**  
64 LT

600D POLYESTER



32540  
anthracite/black

# 2026 BAJA MEDIA

**GA0C0Z**  
30 LT

600D POLYESTER



01900  
navy/white

01500  
blue/white



02500  
black/white

# 2026 BAJA TROL

**GA0D0Z**  
64 LT

600D POLYESTER



32540  
anthracite/black

# 2025 BOOKER

**GA0I0Z**  
33 LT

600D POLYESTER



32540  
anthracite/black

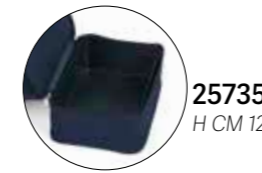


01500  
blue/white

01900  
navy/white



02500  
black/white



25735  
H CM 12

# 2025 BOOKER KID

**GA0J0Z**  
23 LT

600D POLYESTER



32540  
anthracite/black



01500  
blue/white



02500  
black/white



01900  
navy/white

# 2029 LYNOS

**EA1A0Z**  
33 LT

600D POLYESTER



01920  
navy/yellow



01580  
blue/navy

02000  
navy/grey



01910  
navy/red

02600  
black/grey



25735  
H CM 12

# 2029 LYNOS KID

**EA1B0Z**  
23 LT

600D POLYESTER



01920  
navy/yellow



01580  
blue/navy

02000  
navy/grey



01910  
navy/red

02600  
black/grey

# 2029 THOR

**EA3D0Z**  
25 LT

600D POLYESTER



00090  
navy



00120  
black



08180  
black/green fluo



07830  
black/orange fluo



07720  
black/yellow fluo

# 2028 ROY

**HA000Z**  
23 LT

600D POLYESTER



00070  
blue



00020  
red



00090  
navy



00120  
black

# 2025 BRAVE

**GA0K0Z**  
29 LT

600D POLYESTER



01900  
navy/white



02500  
black/white

# 2026 BLUMM

**GA1K0Z**  
45 LT

600D POLYESTER



32540  
anthracite/black



00090  
navy

# 2029 MERCURY

**T0347**  
38 LT

600D POLYESTER



000007  
blue



000009  
navy



000015  
maroon



000012  
black



000004  
green



000002  
red



25735  
H CM 12

# 2029 TOBAGO

**T0389**  
15 LT

600D POLYESTER



000002  
red



000009  
navy



000015  
maroon



000012  
black



000004  
green



000007  
blue

# 2026 BARRIE

**GA0G0Z**  
20 LT

600D POLYESTER



32540  
anthracite/black

# 2029 BENGALA

**GA0F0Z**  
24 LT

600D POLYESTER



00070  
blue



00020  
red



00090  
navy



00120  
black



04920  
yellow fluo/black



59120  
green fluo/black

## 2025 BENSON TROL

GA0H0Z  
32 LT

600D POLYESTER



32540  
anthracite/black



00090  
navy



## 2025 LANCE

EA1C0Z

600D POLYESTER



00070  
blue



00090  
navy



00120  
black

Fino ad esaurimento scorte  
While stocks last  
Jusqu'à épuisement du stock  
Solange der Vorrat reicht

## 2025 BROOKLYN

GA0E0Z

600D POLYESTER



32540  
anthracite/black



Fino ad esaurimento scorte  
While stocks last  
Jusqu'à épuisement du stock  
Solange der Vorrat reicht



07720  
black/yellow fluo



01900  
navy/white



02500  
black/white

## 2025 LARES

EA1D0Z  
10 LT

600D POLYESTER



00120  
black



## 2029 COMPUTER BAG 09

T0378  
14 LT

600D POLYESTER PVC



000012  
black



## 2029 LUIS

EA1F0Z

100% POLYESTER



00120  
black



00090  
navy



04930  
orange fluo/black



59120  
green fluo/black



04920  
yellow fluo/black

## 2029 FOLDER 3.0

FA1B0Z

600D POLYESTER



00120  
black



## 2025 BOCCE 3.0

FA2Z0Z  
29 LT

NYLON 840



00090  
navy



00070  
blue



00120  
black



00020  
red



00150  
maroon



00040  
green



25725  
CAD. X2 - H  
CM 9

## 2029 LEN

EA1E0Z  
7 LT

600D POLYESTER



02600  
black/grey



02000  
navy/grey

## 2029 CLIO

EA1G0Z

600D POLYESTER



00120  
black



## 2029 PORTAMUTE 08

T0328  
64 LT

600D POLYESTER



000009  
navy



70

27

## 2029 APOLLO

EA1M0Z  
13 LT

600D POLYESTER



00120  
black



41

27

## 2029 MEDICAL

T0380  
28 LT

600D POLYESTER



000260  
black/grey



30

63

36

## 2029 CALCETTO 08

T0329  
60 LT

600D POLYESTER



000009  
navy



35

64

34

## 2029 LAYTON FIT

EA0Z0Z  
48 LT

600D POLYESTER



02000  
navy/grey



34

54

31



02600  
black/grey

## 2029 SACCA PORTAPALLONI 12

T0392  
130 LT

600D POLYESTER



000012  
black



83

48

## 2029 PORTAPALLONI 06

T0322  
50 LT

600D POLYESTER



000012  
black



130

24

6/7  
PALLONI/BALLS/BALLONS

## 2025 TWIN TUBE

FA2P0Z  
51,8 LT

600D POLYESTER



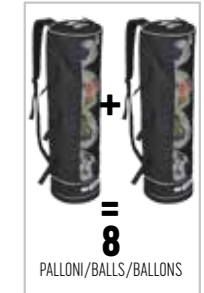
00120  
black



85

26

4  
PALLONI/BALLS/BALLONS



8  
PALLONI/BALLS/BALLONS



# 2026 SETH

Adult  
**UA0D0Z**  
S - M - L - XL

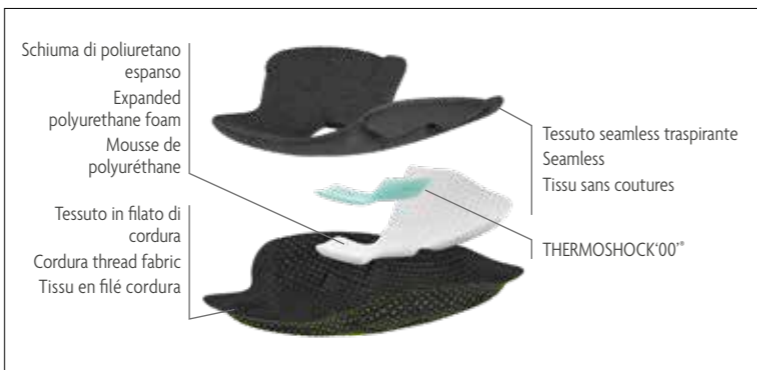


90% POLYAMIDE - 10% ELASTANE  
INSIDE: 90% POLYURETHANE FOAM - 5% POLYESTER  
5% THERMOPLASTIC

- Blister da 2 pezzi
- Schiuma di poliuretano espanso
- Tessuto in filato di cordura
- Tessuto seamless traspirante
- Leggera compressione

- 2-piece blister
- Expanded polyurethane foam
- Cordura yarn fabric
- Breathable seamless fabric
- Light compression

- Blister de 2 pièces
- Mousse de polyuréthane élargie
- Tissu en fil de cordura
- Tissu sans couture respirant
- Compression légère



contiene x2  
contains

### SEAMLESS

La tecnologia a maglia tubolare riduce al minimo le cuciture e offre una grande comodità e traspirabilità oltre ad una vestibilità ergonomica con design sportivo.

Tubular knitting technology reduces seams to a minimum and offers great comfort and breathability, along with ergonomic wearability and a sporty design.

La technologie à maille tubulaire réduit les coutures au minimum, offrant ainsi un confort et une respirabilité importants, et permet de réaliser une coupe ergonomique aux lignes sportives.

### THERMOSHOCK'00''

Brevettato da Thermoshoe, nasce da un concetto innovativo: si tratta di un materiale termoplastico stabile con delle caratteristiche uniche che lo rendono adatto alle più diverse applicazioni. Conosciuto più comunemente come GEL, Thermoshock garantisce un maggior assorbimento degli urti, anche in spessori molto sottili.

Patented by Thermoshoe, comes from an innovative concept: it is a stable thermoplastic material with unique characteristics which make it suitable for the most diverse applications. Commonly known as GEL, Thermoshock guarantees greater absorption of impact even with a very slim thicknesses.

Breveté par Thermoshoe, né d'un concept novateur: il s'agit d'un matériau thermoplastique stable dont les caractéristiques uniques se prêtent aux applications les plus diverses. Plus connu sous le nom de GEL, Thermoshock assure une meilleure absorption des chocs, y compris à très faible épaisseur.

### CORDURA THREAD FABRIC

Nella parte frontale della ginocchiera, zona imbottitura, viene utilizzata questa fibra in CORDURA® per garantire una maggior resistenza all'abrasione, questo specifico filato viene utilizzato soprattutto negli sport di alta montagna.

At the front of the knee pad, in the padded area, CORDURA® fibre is used to guarantee greater resistance to abrasion. This specific yarn is especially used in high mountain sporting activities.

Sur la face avant de la genouillère, dans la zone rembourrée, on utilise de la fibre de CORDURA® afin de garantir une meilleure résistance à l'abrasion. Ce fil spécial est destiné avant tout aux sports de haute montagne.



07720  
black/yellow fluo

### FLEXIBILITY

La protezione è stata costruita con criterio ergonomico con armature differenziate body-mapping.

Protection has been created following ergonomic criteria with differentiated body-mapping reinforcement.

La protection a été fabriquée selon un critère ergonomique avec des armatures différenciées de type body-mapping.



09310  
white/silver

# 2026 TOKYO EVOLUTION

Adult  
**FA2M0Z**  
S - M - L - XL

45% POLYESTER 30% RUBBER 30% POLYAMIDE 15% COTTON 10% RUBBER  
INSIDE: 70% EVA 30% RUBBER

- Struttura con trama jacquard
- Favorisce la dispersione del sudore
- Leggera compressione
- Livello di protezione avanzato nella posizione della rotula
- 3D circular knitting technology

- Structure with Jacquard pattern
- Helps breathability
- Light compression
- Advanced knee protection
- 3D circular knitting technology

- Structure à trame jacquard
- Favorise la transpiration
- Légère compression
- Niveau de protection avancé dans la position de la rotule
- Technologie de tricotage circulaire 3D



00280  
white/navy

48920  
black/silver

31280  
navy/cyan

# 2029 TOKYO

Adult  
**T1410**  
S - M - L - XL

58% POLYESTER 30% RUBBER 12% POLYAMIDE  
INSIDE: 70% EVA 30% RUBBER



000001  
white

000002  
red

000007  
blue

000012  
black

000009  
navy



000006  
fuchsia



000332  
green fluo



000331  
yellow fluo

Fino ad esaurimento scorte  
While stock last  
Jusqu'à épuisement du stock

# 2025 ATENA

Adult  
**T1393**  
S - M - L

Junior  
**T13931Z**  
XS

65% POLYESTER 35% RUBBER  
INSIDE: 50% EVA 50% RUBBER



000001  
white

000002  
red

000009  
navy

000012  
black

000007  
blue



000006  
fuchsia



000332  
green fluo



000331  
yellow fluo

Fino ad esaurimento scorte  
While stock last  
Jusqu'à épuisement du stock

LOOK EVAN  
LOOK MARK  
LOOK CURTIS  
LOOK BRANDON  
LOOK CLASSIC  
TROUSERS  
GOALKEEPERS COMPETITION  
BASKET  
RUGBY  
ATHLETICS  
PADEL  
JACKETS  
BASE LAYER  
ACCESSORIES  
CUSTOM

# 2026 ARTIO

Adult  
**UA0C0Z**  
S/M-L/XL



90% POLYAMIDE - 10% ELASTANE  
INSIDE: 90% POLYURETHANE FOAM - 5% POLYESTER  
5% THERMOPLASTIC

- Blister da 1 pezzo
- Tecnologia seamless
- Estrema leggerezza e traspirabilità

- 1-piece blister
- Seamless technology
- Extreme lightness and breathability

- Blister 1 pièce
- Technologie seamless
- Extrême légèreté et respirabilité



**THERMOSHOCK'00'**

Brevettato da Thermoshoe, nasce da un concetto innovativo: si tratta di un materiale termoplastico stabile con delle caratteristiche uniche che lo rendono adatto alle più diverse applicazioni.

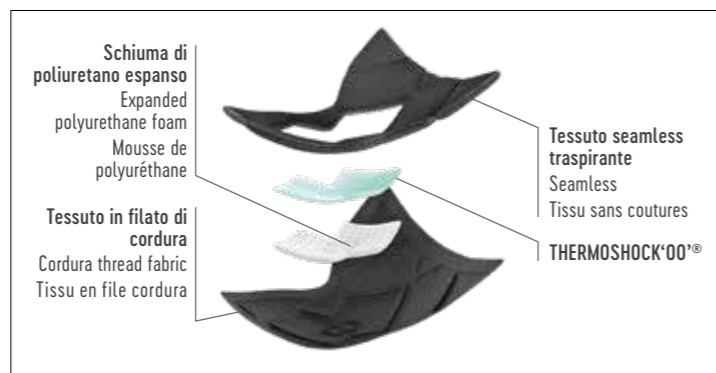
Conosciuto più comunemente come GEL, Thermoshock garantisce un maggior assorbimento degli urti, anche in spessori molto sottili, con una durezza shore 'A' virtualmente a '0' e con un allungamento a rottura di 1100.

Patented by Thermoshoe, comes from an innovative concept: it is a stable thermoplastic material with unique characteristics which make it suitable for the most diverse applications. Commonly known as GEL, Thermoshock guarantees greater absorption of impact even with a very slim thicknesses, with Shore A hardness of practically '0' and an elongation at break of 1100.

Breveté par Thermoshoe, né d'un concept novateur: il s'agit d'un matériau thermoplastique stable dont les caractéristiques uniques se prêtent aux applications les plus diverses. Plus connu sous le nom de GEL, Thermoshock garantit une meilleure absorption des chocs, y compris à très faible épaisseur, avec une dureté Shore « A » virtuellement à « 0 » et avec un allongement à la rupture de 1100.



09310  
white/silver



contiene x1  
contains x1

## SEAMLESS

La tecnologia a maglia tubolare riduce al minimo le cuciture e offre una grande comodità e traspirabilità oltre ad una vestibilità ergonomica con design sportivo.

Tubular knitting technology reduces seams to a minimum and offers great comfort and breathability, along with ergonomic wearability and a sporty design.

La technologie à maille tubulaire réduit les coutures au minimum, offrant ainsi un confort et une respirabilité importants, et permet de réaliser une coupe ergonomique aux lignes sportives.

## FLEXIBILITY

La protezione è stata costruita con criterio ergonomico, grazie alle schiacciate in alta frequenza, garantiscono la miglior aderenza e flessibilità dei movimenti durante tutte le fasi di gioco.

The pads have been made following ergonomic criteria and thanks to high-frequency welding they guarantee a closer fit and flexibility of movement during all stages of play.

La protection a été fabriquée selon un critère ergonomique, grâce à des écrasements à haute fréquence qui garantissent une meilleure adhérence et une flexibilité de mouvement tout au long des phases du jeu.

## COMPRESSION



07720  
black/yellow fluo

## NILIT BREEZE YARN

- Il filato conferisce flessibilità e morbidezza al prodotto finito
- La sezione trasversale simile a quella del cotone dona elasticità ed un sensazione di benessere
- L'uso di un polimero completamente smussato produce un tocco soffice e dà origine a una speciale ventilazione
- Filato antibatterico

- The yarn gives flexibility and softness to the end product
- The transversal section, similar to that of cotton, gives it elasticity and a sensation of comfort
- The use of a completely smooth polymer produces a soft touch and provides special ventilation
- Antibacterial yarn

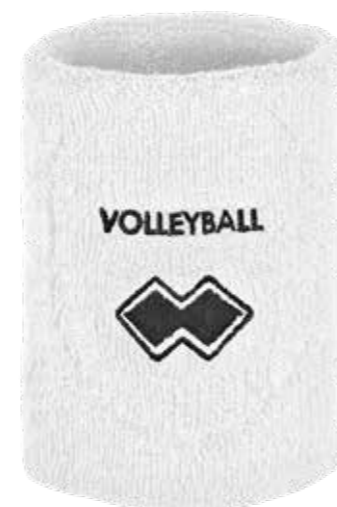
- Ce fil assure flexibilité et douceur au produit fini
- Sa section transversale ressemblant à celle du coton apporte de l'élasticité et une sensation de bien-être
- L'utilisation d'un polymère complètement émoussé se traduit par un toucher doux et crée une ventilation particulière
- Fil antibactérien

# 2029 RICK

PA2Z3Z

contiene x2  
contains x2

75% COTTON 25% ELASTANE



00010  
white



00090  
navy



00120  
black

# 2026 KNIK

Adult  
**U655**  
S/M-L/XL



87% POLYAMIDE - 12% ELASTANE  
1% POLYPROPYLENE



000007  
blue



000003  
yellow



000002  
red



000012  
black



000009  
navy



000001  
white



000013  
orange



000004  
green



000015  
maroon

Fino ad esaurimento scorte  
While stocks last  
Jusqu'à épuisement du stock

# 2029 POLSINO

T0630

contiene x2  
contains x2

75% COTTON 25% ELASTANE



00010  
white



00090  
navy



00120  
black

# 2026 NASHI

Adult  
**U645**  
S/M-L/XL



87% POLYAMIDE - 12% ELASTANE - 1% POLYPROPYLENE



000004  
green



000015  
maroon

Fino ad esaurimento scorte  
While stocks last  
Jusqu'à épuisement du stock



# 2025 COMMANDER 3.0

Adult **GA1Q0Z** Junior **GA1Q1Z**

Competition  
50% EVA 45% POLYESTER 5% ELASTAN

- Struttura in EVA termo formata
- Conforme alle normative CE
- Design multistrato a mappatura corporea per ottimizzare la deflessione durante l'impatto
- High Frequency Technology nella parte superiore per distribuire e disperdere l'energia degli impatti

- Heat-formed EVA Structure
- Compliant with CE regulations
- Multi-layer, body-mapped design to optimise impact deflection without compromising on comfort during use
- High Frequency Technology in the top layer helps to distribute the energy of impact

- Structure en EVA thermoformée
- Conforme à la réglementation CE
- plusieurs couches à cartographie corporelle afin d'optimiser la déviation lors de l'impact sans toutefois porter atteinte au confort d'utilisation
- High Frequency Technology, la couche supérieure contribue à répartir et à disperser l'énergie des chocs reçus



07720  
black/yellow fluo



06640  
blue/navy/white

# 2029 JUMAR EVO

Adult **GA1G0Z** Junior **GA1G1Z**

**10**  
PCS X PACK

100% POLYESTER (MICRO PILE)



00120  
black



03320  
green fluo



35990  
cyan



00020  
red



00090  
navy

# 2029 SEAN

Adult **HA0P0Z** Junior **HA0P1Z**

**10**  
PCS X PACK

100% POLYESTER



02000  
navy/grey



02600  
black/grey

# 2025 TAKLE 3.0

Adult **GA1R0Z** Junior **GA1R1Z** Kid **GA1R2Z**

Competition  
30% K-RESIN 30% EVA  
10% POLYESTER 15% RUBBER  
10% ELASTAN 5% NYLON



15720  
white/royal/green fluo

89240  
purple/orange/yellow

# 2025 OSAKI 3.0

Adult **FA1L0Z**

95% POLYESTER - 5% ELASTANE



00270  
white/royal



02500  
black/white

# 2029 MAAT

Adult **HA0Q0Z** Junior **HA0Q1Z**

**10**  
PCS X PACK

100% ACRYLIC



00120  
black



00090  
navy

# 2025 STEEL TECH

Adult **GA0A0Z** Junior **GA0A1Z**

8-9-10-11

4-5-6-7

35% NYLON - 30% NEOPRENE  
25% POLYESTER 10% SILICON



02500  
black/white

## 2029 EDDIE

Adult  
GA1P0Z

100% POLYESTER



00020  
red



00010  
white



00070  
blue



00090  
navy



00120  
black



## 2029 POGGIAPIEDI

T0770  
Ø CM 64



000012  
black

## 2026 RIGEL

Adult  
U675

S/M-L/XL



96% POLYAMIDE - 4% ELASTANE



074744.0  
CENTROCOT



000012  
black



000001  
white

Fino ad esaurimento scorte  
While stocks last  
Jusqu'à épuisement du stock

## 2029 NOMEN

FA1F0Z  
750 ML

BODY: POLYPROPYLENE  
CAP: POLYPROPYLENE  
VALVE: RUBBER



04920  
yellow fluo/black

## 2025 FASCIA CAPITANO 2016

Adult  
EA1R0Z

10  
PCS X PACK

Junior  
EA1R1Z



00500  
red/white



00310  
white/black

## 2029 PORTABORRACCIA 2016

EA2H0Z

100% POLIPROPILENE



07720  
black/yellow fluo



## 2028 EOS LIGHT

HA0M0Z  
35»48

UPPER: 92% POLIESTER TEXTILE  
8% SYNTHETIC LEATHER  
OUTSOLE: 70% NYLON - 30% RUBBER

- Tomaia in tessuto traspirante
- leggerezza e comfort
- speciale struttura che migliora la stabilità
- suola in phylon e gomma con ammortizzazione reattiva

- Breathable fabric upper
- Lightweight and comfortable
- Special structure that enhances stability
- Phylon and rubber sole with responsive cushioning

- Tige en tissu respirant
- Légèreté et confort
- Structure spéciale qui améliore la stabilité
- Semelle en phylon et caoutchouc avec amorti réactif



00280  
white/navy



02500  
black/white



## 2025 BAHIA ID

GA1A0Z  
36»46

UPPER: 90% EVA 10% PU  
LINING: 100% POLYESTER  
INSOLE/OUTSOLE: 100% EVA

Fino ad esaurimento scorte  
While stocks last  
Jusqu'à épuisement du stock  
Solange der Vorrat reicht



71610  
royal/after eight/navy

## 2028 ZACK

HA0N0Z  
36»46

UPPER: 90% PU 5% TEXTILE  
5% RUBBER PULLER  
INSOLE/OUTSOLE: 100% EVA



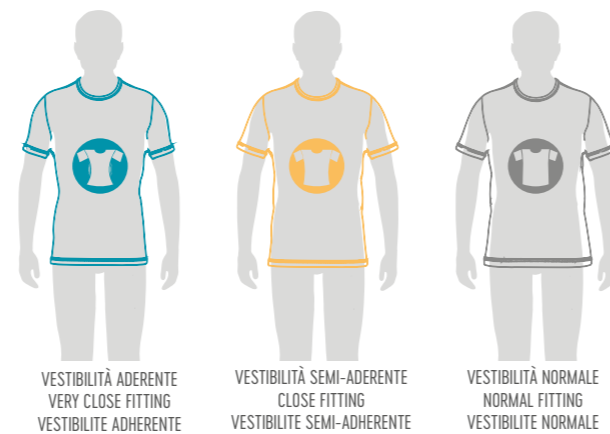
07780  
black/anthracite/white

# SIZE CHART

Se sei al limite tra due taglie, ordina quella immediatamente più piccola per una vestibilità più aderente o quella immediatamente più grande per una vestibilità più comoda.

If you are in between sizes, order the smaller size for a snugger fit or the larger one if you prefer a more comfortable fit.

Si vous êtes juste entre deux tailles, commandez la plus petite pour une coupe plus ajustée ou la plus grande pour une coupe plus confortable.



VESTIBILITÀ ADERENTE  
VERY CLOSE FITTING  
VESTIBILITE ADHERENTE

VESTIBILITÀ SEMI-ADERENTE  
CLOSE FITTING  
VESTIBILITE SEMI-ADHERENTE

VESTIBILITÀ NORMALE  
NORMAL FITTING  
VESTIBILITE NORMALE

TAGLIE UOMO / SIZES MAN / TAILLES HOMME										
	EU	IT	TORACE CHEST POITRINE		VITA WAIST TAILLE		FIANCHI HIPS FLANCS		ALTEZZA HEIGHT HAUTEUR	
			cm	inches	cm	inches	cm	inches	cm	inches
KID	3YXS	22-24							98-108	39-42.5
	2YXS	26-28							110-120	42.5-47.2
JUNIOR	YXS	30-32	64-72	25-28	54-60	21.26-24	66-74	26-29	122-132	48-52
	XXS	34-36	72-80	28-31	60-66	24-26	74-82	29-32	134-144	52.8-56.7
	XS	38-40	80-88	31-35	66-72	26-28	82-90	32-35	146-156	57.5-61.4
ADULT	S	42-44	90-94	35-37	72-76	28-30	92-96	36-38	167-172	65.7-67.7
	M	46-48	94-98	37-39	76-80	30-31	96-100	38-39.4	173-178	68.1-70.1
	L	50-52	98-102	39-40.2	80-84	31-33	100-104	39.4-40.9	179-184	70.5-72.4
	XL	54	102-106	40.2-41.7	84-88	33-35	104-108	40.9-42.5	185-190	72.8-74.8
	XXL	56	106-110	41.7-43.3	88-92	35-36	108-112	42.5-44.1	191-196	75.2-77.2
	3XL	58	110-114	43.3-44.9	92-94	36-37	112-116	44.1-45.7	197-202	77.6-79.5
	4XL	60	114-118	44.9-46.5	94-96	37-38	116-120	45.7-47.2	203-208	79.9-81.9

TAGLIE DONNA / SIZES WOMAN / TAILLES FEMME										
	EU	IT	TORACE CHEST POITRINE		VITA WAIST TAILLE		FIANCHI HIPS FLANCS		ALTEZZA HEIGHT HAUTEUR	
			cm	inches	cm	inches	cm	inches	cm	inches
KID	3YXS	24-26							98-108	39-42.5
	2YXS	26-28							110-120	42.5-47.2
JUNIOR	YXS	30-32	64-72	25-28	54-60	21.26-24	66-74	26-29	122-132	48-52
	XXS	34-36	72-80	28-31	60-66	24-26	74-82	29-32	134-144	52.8-56.7
	XS	38-40	80-88	31-35	66-72	26-28	82-92	32-36	146-156	57.5-61.4
ADULT	S	42-44	84-88	33-35	68-72	27-28	92-96	36-38	164-168	64.6-66.1
	M	46-48	88-92	35-36	72-76	28-30	96-100	38-39.4	169-173	66.5-68.1
	L	50-52	92-96	36-38	76-80	30-31	100-104	39.4-40.9	174-178	68.5-70.1
	XL	54	96-100	38-39.4	80-84	31-33	104-108	40.9-42.5	179-183	70.5-72
	XXL	56	100-104	39.4-40.9	84-88	33-35	108-112	42.5-44.1	184-188	72.4-74
	3XL	58	104-108	40.9-42.5	88-92	35-36	112-116	44.1-45.7	189-193	74.4-76
4XL	60	108-112	42.5-44.2	92-96	36-38	116-120	45.7-47.2	194-198	76.4-78	

# GUANTI / GLOVES / GANTS

Per prendere la misura giusta della larghezza della mano, segui esattamente il disegno illustrativo.

Follow the drawing to measure the hand's width in the proper way and use the chart to figure out which size best fits your hand.

Pour mesurer la largeur de la main suivre le dessin et le tableau.



GLOVES SIZING CHART							
7,5	8	8,5	9	9,5	10	10,5	11
8,2 cm	8,5 cm	8,8 cm	9,1 cm	9,4 cm	9,7 cm	10 cm	10,3 cm

# GINOCCHIERE / KNEEPADS / GENOUILLÈRES

## SIZE GUIDE

Misura la circonferenza della tua gamba 15 cm sotto la tua rotula.

Measure the circumference of your leg at a point 15 cm below the middle of your kneecap.

Mesure ton tour de jambe 15 cm au-dessous de la rotule.



KNEEPAD SIZING CHART					
	XS	S	M	L	XL
cm	30-33	33-35	35-37	37-40	40-45
inches	12-13	13-13,7	13,7-14,5	14,5-15,7	15,7-17,7

# CALZE / SOCKS / CHAUSSETTES



SOCKS SIZING CHART							
SIZE	KID	JR	AD	XS	M	L	XL
EU	35/38	39/42	42/46	31/34	35/38	39/42	43/47
USA	3.5/6	7/9	9/12	1/3	3.5/6	7/9	10/13
UK	2.5/5	6/8	8/11	12.5/2	2.5/5	6/8	9/12

## SIZE ENERGY GRIP:

M: 39/41

L: 42/44

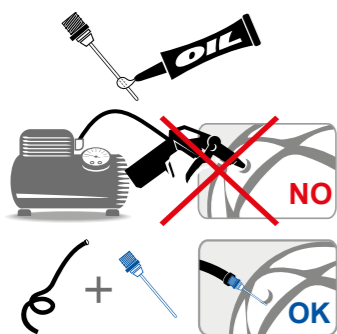
XL: 45/47

# SCARPE / SHOES / CHAUSSURES



SHOES SIZING CHART														
EU	35	36	37	38	39	40	41	42	43	44	45	46	47	48
USA	3.5	4	5	6	7	7.5	8	9	10	10.5	11	12	13	14
UK	2.5	3	4	5	6	6.5	7	8	9	9.5	10.5	11	12	13

## PALLONI/ BALLS / BALLON



Per non danneggiare la valvola occorre utilizzare solo ed esclusivamente l'ago apposito, precedentemente lubrificato.

In order not to damage the valve always use the needle to inflate the ball, oil the needle before using.

Pour ne pas endommager la valve il faut utiliser exclusivement l'aiguille précédemment lubrifiée.

Gonfiare una prima volta tutti i palloni tra:

First inflate the ball at:

Gonfler une première fois tout les ballons entre:

**0,4-0,5 BAR**

Dopo circa 24 ore, necessarie per far sì che le cuciture e la pelle si assestino gradualmente, si può procedere con l'operazione di gonfiaggio definitiva.

Wait 24 hours in order for the seams to gradually adjust, you may now complete the inflation.

Après environ 24 heures, nécessaires pour faire que les coutures et le cuir prend forme graduellement, on peut procéder avec l'opération de gonflage définitif.

Gonfiare secondo i valori indicati vicino la valvola.

Dopo ogni utilizzo la pressione del pallone deve essere riportata a 0,4 BAR per non sottoporre il pallone ad inutili sollecitazioni quando lo stesso rimane "a riposo".

Le misurazioni della pressione devono essere effettuate avvalendosi di un manometro e non manualmente.

Inflate according to notes around the valve.

After using the ball always decrease the pressure to 0,4 BAR.

Always use the manometer to measure the pressure. Never manually.

Gonfler selon les valeurs indiqués à coté de la valve.

Après l'utilisation dégonfler à 0,4 BAR.

La mesure de la pression doit être effectuée avec le manomètre et non manuellement.



Terreni con neve  
Ground covered with snow



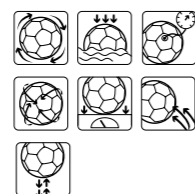
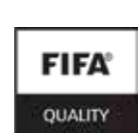
Terreni con fango e pioggia  
Muddy and wet grounds



Terreni asciutti  
Dry grounds



Indoor



CIRCONFERENCE (CM):  
68.0-70.0  
WEIGHT: 410-450  
LOSS OF PRESSURE: 25  
WATER ABSORPTION: 10



CIRCONFERENCE (CM):  
68.5-69.5  
WEIGHT: 420-445  
LOSS OF PRESSURE: 20  
WATER ABSORPTION: 10

## WASHING AND GARMENT CARE

### IT

Per garantire i più alti standard qualitativi dei capi, Erreà controlla e verifica scrupolosamente tutti i tessuti impiegati.

Le fibre naturali del cotone, i tessuti tecnici e le felpe riescono a mantenere inalterate nel tempo le loro caratteristiche e il loro comfort se trattate con la massima cura.

Vi consigliamo pertanto di leggere con attenzione i consigli d'uso, di lavaggio e di manutenzione riportati sulle etichette dei capi.

### EN

To guarantee the highest possible quality standards for all garments, Erreà scrupulously control all the fabrics utilised in production.

The natural cotton, technical fabrics and sweatshirt materials will maintain their characteristics and comfort over time, if cared for correctly.

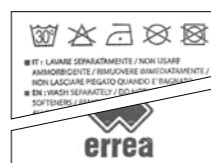
We therefore ask that you read carefully, the washing and maintenance instructions found on the label of each garment.

### FR

Pour assurer la meilleure qualité, Erreà vérifie et contrôle les tissus utilisés.

Les fibres naturelles du coton, les tissus techniques et le molleton gardent inaltéré dans le temps leurs caractéristiques s'ils sont traités avec attention et soin.

Nous vous recommandons, donc, de suivre attentivement les étiquettes avec les conseils pour l'utilisation, le lavage et la manutention des produits.



L'etichetta con i consigli di lavaggio è specifica per ogni indumento. Erreà garantisce che potete seguire i suoi consigli alla "lettera".

The washing instructions label is specific for every garment. Please follow it carefully.

L'étiquette pour les conseils de lavage est spécifique pour chaque article. Erreà assure que ses conseils sont à suivre "à la lettre".

### LAVAGGIO / WASHING / LAVAGE

Lavare in lavatrice (max. 30°)  
Washing temperature max 30°  
Lavage machine (max 30°)

### CANDEGGIO / BLEACHING / BLANCHIMENT

Non utilizzare candeggina  
Do not bleach  
Ne pas utiliser de produits blanchissants

### LAVAGGIO A SECCO / DRY CLEANING / NETTOYAGE A SEC

Utilizzare i solventi in uso (salvo la trielina)  
Do not use trichloroethylene  
Utiliser les solvants en commerce sauf le trichloréthylène

Non lavare a secco  
Do not dry-cleaning  
Ne pas nettoyer à sec

### ASCIUGATURA / DRYING / SECHAGE

Non utilizzare l'asciugatrice  
Do not tumble dry  
Ne pas utiliser le séchoir

### STIRATURA / IRONING / REPASSAGE

Stirare a temperatura dolce senza vapore (110°C)  
Iron at mild temperature without steam (110°C)  
Repasser à température douce sans vapeur

Non stirare  
No steam  
Ne pas repasser



PRODUTTORI DAL 1988

MANUFACTURERS SINCE 1988 - FABRICANTS DEPUIS 1988





**errea**

**ERREÀ SPORT S.p.A.**

Via G. Di Vittorio, 2/1  
43056 S. Polo di Torrile (Parma) - Italy

[errea.com](http://errea.com)

[info@errea.it](mailto:info@errea.it)

CERTIFIED QUALITY  
MANAGEMENT SYSTEM



UNI EN ISO 9001:2015



CONTRIBUTORI DEI  
PRODUTTORI DAL  
**1988**